

Product datasheet for **RC210130**

CST8 (NM_005492) Human Tagged ORF Clone

Product data:

Product Type: Expression Plasmids
Product Name: CST8 (NM_005492) Human Tagged ORF Clone
Tag: Myc-DDK
Symbol: CST8
Synonyms: CRES; CTE55
Mammalian Cell Selection: Neomycin
Vector: pCMV6-Entry (PS100001)
E. coli Selection: Kanamycin (25 ug/mL)
ORF Nucleotide Sequence: >RC210130 ORF sequence
Red=Cloning site Blue=ORF Green=Tags(s)

TTTTGTAATACGACTCACTATAGGGCGGCCGGAATTCGTCGACTGGATCCGGTACCGAGGAGATCTGCC
GCC**CGATCGCC**

ATGCCAGGTGCCGGTGGCTCTCCCTGATCCTCCTCACCATTCCCCTGGCCCTGGTGCCAGGAAAGACC
CAAAAAGAATGAGACGGGGTCTGAGGAAATAAAACCGTCAATGCCTCAAATGCCAACGTGAAGCA
GTGTCTGTGGTTGCCATGCAAGAATACAACAAGAGAGCGAGGACAAGTATGTCTTCTGGTGGTCAAG
ACACTGCAAGCCAGCTCAGGTCACAAATCTTCTGGAATACCTATTGATGTAGAAATTGCCCGCAGCG
ATTGCAGAAAGCCTTTAAGCACTAATGAAATCTGCGCCATTCAAGAAAACCTCAAGCTGAAAAGGAAATT
AAGCTGCAGCTTTTTGGTAGGAGCACTCCCTGGAATGGTGAATCACTGTGATGGAGAAAAAGTGTGAA
GATGCT

ACGCGTACGCGGCCGCTCGAGCAGAACTCATCTCAGAAGAGGATCTGGCAGCAAATGATATCCTGGATT
ACAAGGATGACGACGATAAGGTTTAA

Protein Sequence: >RC210130 protein sequence
Red=Cloning site Green=Tags(s)

MPRCRWLSLILLTIPLALVARKDPKKNETGVLRLKLPVNASNANVKQCLWFAMQEYNKESDKYVFLVVK
TLQAQLQVTNLLLEYLIDVEIARSDCRKPLSTNEICAIQENSKLRKLSFVLVGPWNGEFTVMEKKCE
DA

TRTRPLEQKLISEEDLAANDILDYKDDDDKV

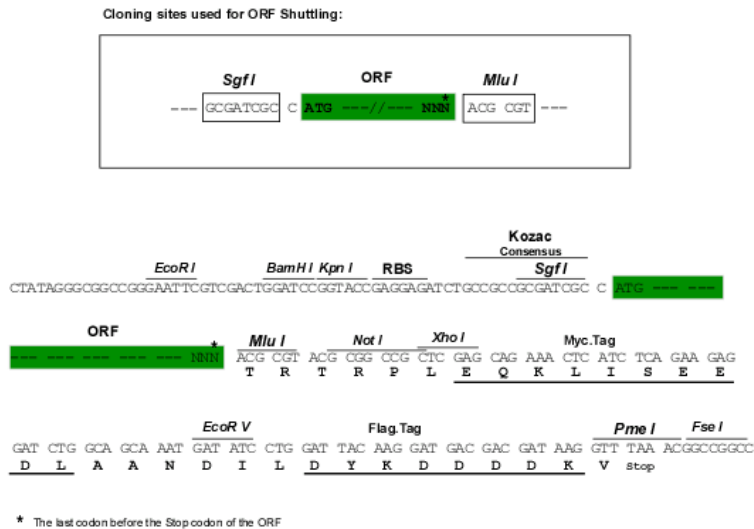
Chromatograms: https://cdn.origene.com/chromatograms/mk6370_d01.zip



[View online »](#)

Restriction Sites: SgfI-MluI

Cloning Scheme:



ACCN: NM_005492

ORF Size: 426 bp

OTI Disclaimer: The molecular sequence of this clone aligns with the gene accession number as a point of reference only. However, individual transcript sequences of the same gene can differ through naturally occurring variations (e.g. polymorphisms), each with its own valid existence. This clone is substantially in agreement with the reference, but a complete review of all prevailing variants is recommended prior to use. [More info](#)

OTI Annotation: This clone was engineered to express the complete ORF with an expression tag. Expression varies depending on the nature of the gene.

Components: The ORF clone is ion-exchange column purified and shipped in a 2D barcoded Matrix tube containing 10ug of transfection-ready, dried plasmid DNA (reconstitute with 100 ul of water).

Reconstitution Method:

1. Centrifuge at 5,000xg for 5min.
2. Carefully open the tube and add 100ul of sterile water to dissolve the DNA.
3. Close the tube and incubate for 10 minutes at room temperature.
4. Briefly vortex the tube and then do a quick spin (less than 5000xg) to concentrate the liquid at the bottom.
5. Store the suspended plasmid at -20°C. The DNA is stable for at least one year from date of shipping when stored at -20°C.

RefSeq: [NM_005492.1](#)

RefSeq Size: 923 bp

RefSeq ORF: 429 bp

Locus ID: 10047

UniProt ID: [O60676](#)

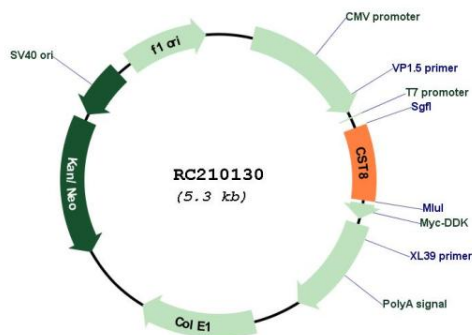
Cytogenetics: 20p11.21

Protein Families: Secreted Protein

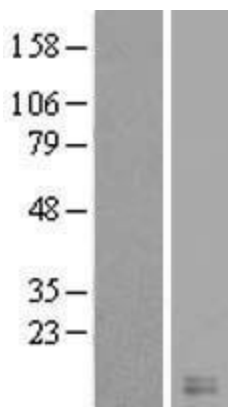
MW: 16.3 kDa

Gene Summary: The cystatin superfamily encompasses proteins that contain multiple cystatin-like sequences. Some of the members are active cysteine protease inhibitors, while others have lost or perhaps never acquired this inhibitory activity. There are three inhibitory families in the superfamily, including the type 1 cystatins (stefins), type 2 cystatins and the kininogens. The type 2 cystatin proteins are a class of cysteine proteinase inhibitors found in a variety of human fluids and secretions. The cystatin locus on chromosome 20 contains the majority of the type 2 cystatin genes and pseudogenes. This gene is located in the cystatin locus and encodes a protein similar to type 2 cystatins. The encoded protein exhibits highly tissue-specific expression in the reproductive tract, suggesting implicit roles in reproduction. Alternative splicing results in multiple transcript variants. [provided by RefSeq, Aug 2013]

Product images:



Circular map for RC210130



Western blot validation of overexpression lysate (Cat# [LY417277]) using anti-DDK antibody (Cat# [TA50011-100]). Left: Cell lysates from untransfected HEK293T cells; Right: Cell lysates from HEK293T cells transfected with RC210130 using transfection reagent MegaTran 2.0 (Cat# [TT210002]).