

Product datasheet for **RC210129**

MYOZ3 (NM_133371) Human Tagged ORF Clone

Product data:

Product Type: Expression Plasmids
Product Name: MYOZ3 (NM_133371) Human Tagged ORF Clone
Tag: Myc-DDK
Symbol: MYOZ3
Synonyms: CS-3; CS3; FATZ-3; FRP3
Mammalian Cell Selection: Neomycin
Vector: pCMV6-Entry (PS100001)
E. coli Selection: Kanamycin (25 ug/mL)
ORF Nucleotide Sequence: >RC210129 ORF sequence
Red=Cloning site Blue=ORF Green=Tags(s)

TTTTGTAATACGACTCACTATAGGGCGGCCGGAATTCGTCGACTGGATCCGGTACCGAGGAGATCTGCC
GCC**CGATCGCC**

ATGATCCCAAGGAGCAGAAGGGGCCAGTGATGGCTGCCATGGGGACCTCACTGAACCAGTCCCTACGC
TGGACCTGGCAAGAAGCTGAGCGTGCCCCAGGACCTGATGATGGAGGAGCTGTCACTACGCAACAACAG
AGGGTCCCTCCTTCCAGAAGAGGCAGCGCCGTGTGCAAGTTCACTTTCGAGTTAGCAGCCAGCCAG
CGGGCGATGCTGGCCGGAAGCGCCAGGAGGAAGGTGACTGGAACAGCGGAGTCGGGGACGGTTGCCAATG
CCAATGGCCCTGAGGGGCCGAACCTACCGCTCGGAGCTCCACATCTCCCGGCCTACCCGGGGCCTCACT
CGGGGTCCCAGGGCGCCACCCTGCAGCCGCCCTGCTGGGTGCGTCCCAGCCCCAGCGCCCTGGCG
CCAGGCTATGCGGAGCCGCTGAAGGGCGTCCCAGGAGAGTCAACCACACCGCCATCCCAAGGGCT
ACCGCTGCCCTTGGCAGGAGTTCGTCAGCTACCGGACTACCAGAGCGATGGCCGAAGTCACACCCCCAG
CCCCAAGACTACCGAAATTTCAACAAGACCCCGTGCCATTTGGAGGACCCCTCGTGGGGGGCACTTTT
CCCAGGCCAGGCACCCCTTCCATCCCGGAGCCCTCAGTGGCTTGGAACTCCTCCGTCTCAGACCCAGCT
TCAACAGAGTGGCCAGGGCTGGTCCGTAACCTCCAGAGTCCGAGGAGCTG

ACGCGTACGCGGCCGCTCGAGCAGAACTCATCTCAGAAGAGGATCTGGCAGCAAATGATATCCTGGATT
ACAAGGATGACGACGATAAGGTTTAA



Protein Sequence: >RC210129 protein sequence
 Red=Cloning site Green=Tags(s)

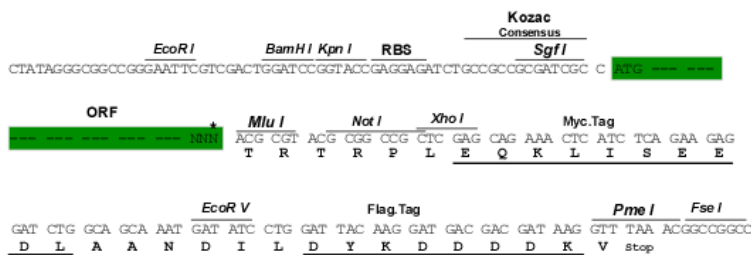
MIPKEQKGPVMAAMGDLTEPVPTLDLGGKLSVPQDLMEELSLRNNRGSLLFQKRQRRVQKFTFELAASQ
 RAMLAGSARRKVTGTAESGTVANANGPEGPNYRSELHIFPASPGLGGPEGHAAPAGCVSPSALA
 PGYAEPLKGPPEKFNHTAIPKGYRCPWQEFVSYRDYQSDGRSHTPSPNDYRNFNKTVPVFGGPLVGGTF
 PRPGTPIPEPLSGLELLRLRPSFNVAQGWVRNLPESEEL

TRTRPLEQKLISEEDLAANDILDYKDDDDKV

Restriction Sites: SgfI-MluI

Cloning Scheme:

Cloning sites used for ORF Shuttling:



* The last codon before the Stop codon of the ORF

ACCN: NM_133371

ORF Size: 753 bp

OTI Disclaimer: The molecular sequence of this clone aligns with the gene accession number as a point of reference only. However, individual transcript sequences of the same gene can differ through naturally occurring variations (e.g. polymorphisms), each with its own valid existence. This clone is substantially in agreement with the reference, but a complete review of all prevailing variants is recommended prior to use. [More info](#)

OTI Annotation: This clone was engineered to express the complete ORF with an expression tag. Expression varies depending on the nature of the gene.

Components: The ORF clone is ion-exchange column purified and shipped in a 2D barcoded Matrix tube containing 10ug of transfection-ready, dried plasmid DNA (reconstitute with 100 ul of water).

Reconstitution Method:

1. Centrifuge at 5,000xg for 5min.
2. Carefully open the tube and add 100ul of sterile water to dissolve the DNA.
3. Close the tube and incubate for 10 minutes at room temperature.
4. Briefly vortex the tube and then do a quick spin (less than 5000xg) to concentrate the liquid at the bottom.
5. Store the suspended plasmid at -20°C. The DNA is stable for at least one year from date of shipping when stored at -20°C.

RefSeq: [NM_133371.2](#), [NP_588612.1](#)

RefSeq Size: 3493 bp

RefSeq ORF: 756 bp

Locus ID: 91977

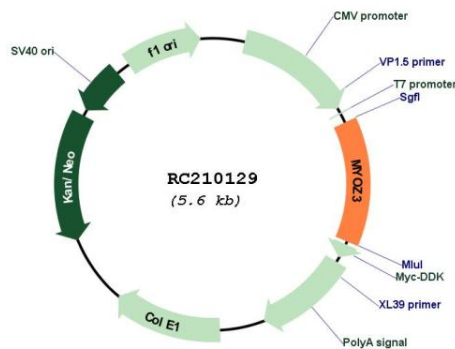
UniProt ID: [Q8TDC0](#)

Cytogenetics: 5q33.1

MW: 27.2 kDa

Gene Summary: The protein encoded by this gene is specifically expressed in the skeletal muscle, and belongs to the myozenin family. Members of this family function as calcineurin-interacting proteins that help tether calcineurin to the sarcomere of cardiac and skeletal muscle. They play an important role in modulation of calcineurin signaling. [provided by RefSeq, Apr 2012]

Product images:



Circular map for RC210129