

Product datasheet for RC210128

BARX2 (NM_003658) Human Tagged ORF Clone

Product data:

Product Type:	Expression Plasmids
Product Name:	BARX2 (NM_003658) Human Tagged ORF Clone
Tag:	Myc-DDK
Symbol:	BARX2
Mammalian Cell Selection:	Neomycin
Vector:	pCMV6-Entry (PS100001)
E. coli Selection:	Kanamycin (25 ug/mL)
ORF Nucleotide Sequence:	>RC210128 representing NM_003658 Red=Cloning site Blue=ORF Green=Tags(s)

TTTTGTAATACGACTCACTATAGGGCGGCCGGAATTCGTCGACTGGATCCGGTACCGAGGAGATCTGCCGCCCGATCGCC

ATGCACTGCCACGCCGAGCTGAGGCTGAGCTCGCCCGCCAGCTCAAAGCAGCCAGGCGGCGCTACAAGA
CTTTCATGATCGACGAGATCCTCTCCAAGGAGACCTGCGATTACTTTGAGAACTTTCCTCTACTCCGT
GTGCCCCGTGGTGGTGGTGGCACCAGCCCTGCATTCTGTACGGGCTCCCTTCCCTGCGGGCATAT
CCGCTCCTCTCGGTGATCACCCGCCAGCCACTGTCATCTCCACCTGGTCCCTGCCACCCCGGGAATCG
CCCAGGCACTGTCTGCCACCAGGTACCGAGGCGGTCTCTGCTGAGGCCCGAGGGGCGAGGCCCTAGC
CAGCAGCGAGTCAGAGACGGAACAGCCACGCCCGACAGAAGAAGCCCGCCGGAGTCGCACCATCTTC
ACCGAGCTGCAGCTCATGGCCCTGGAGAAGAAATTCAGAAGCAGAAGTATTTGTCAACCCAGACAGGT
TGGACTTGGCTCAGTCTCTGGGACTCACTCAGTGCAGGTGAAGACCTGGTATCAGAATCGCAGGATGAA
ATGGAAGAAAAATGGTTCTTAAAGGTGGACAGGAAGCACCCACAAAACCAAAGGTGCCCCAAGAAGAAC
TCCATCCACATCAGAAGAGATTGAAGCTGAAGAGAAGATGAACAGCCAGGCCAGGCGAGGAGCAGC
TGGAGCCCTCTCAGGGGCAGGAGGAGCTCTGTGAAGCACAGGAACCGAAAGCACGTGATGTCCCCTAGA
GATGGCAGAGCCACAGACCCGCCAGGAGTTGCAATACCCTCTTCGGAACCCCAACCATTAAGC

ACGCGTACGCGGCCGCTCGAGCAGAACTCATCTCAGAAGAGGATCTGGCAGCAAATGATATCTGGATT
ACAAGGATGACGACGATAAGTTTAA



[View online »](#)

Protein Sequence: >RC210128 representing NM_003658
 Red=Cloning site Green=Tags(s)

MHCHAE LRLSSP GQLKAARRRYKTFMIDEILSKETCDYFEKLSLYSVCPSLVVRPKPLHSCTGSPSLRAY
 PLLSVITRQPTVISHLVPATPGIAQALSCHQVTEAVSAEAPGGEALASSESETEQTPRQKKPRRSRTIF
 TELQLMGLKFKQKYLSTPDRDLAQSLGLTQLQVKTWYQNRMRKWKMMVLKGGQEAPTKPKGRPKKN
 SIPTSEEIEAEKMNLSQAQGGQEQLEPSQGGQEELECEAQEPKARDVPLEMAEPPDPPQELPIPSSEPPPLS

TRTRPLEQKLISEEDLAANDILDYKDDDDKV

Chromatograms: https://cdn.origene.com/chromatograms/ja1482_d11.zip

Restriction Sites: SgfI-MluI

Cloning Scheme:



ACCN: NM_003658

ORF Size: 837 bp

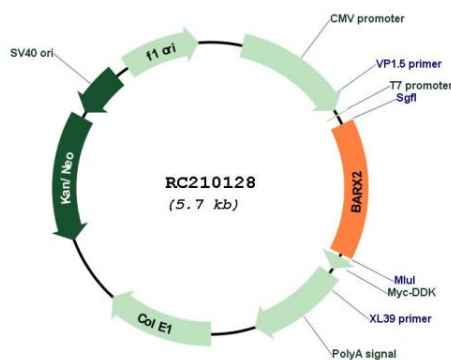
OTI Disclaimer: Due to the inherent nature of this plasmid, standard methods to replicate additional amounts of DNA in E. coli are highly likely to result in mutations and/or rearrangements. Therefore, OriGene does not guarantee the capability to replicate this plasmid DNA. Additional amounts of DNA can be purchased from OriGene with batch-specific, full-sequence verification at a reduced cost. Please contact our customer care team at custsupport@origene.com or by calling 301.340.3188 option 3 for pricing and delivery.

The molecular sequence of this clone aligns with the gene accession number as a point of reference only. However, individual transcript sequences of the same gene can differ through naturally occurring variations (e.g. polymorphisms), each with its own valid existence. This clone is substantially in agreement with the reference, but a complete review of all prevailing variants is recommended prior to use. [More info](#)

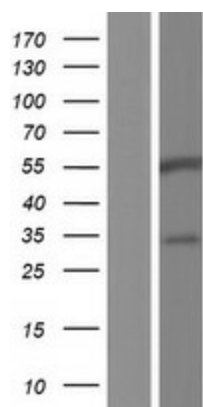
OTI Annotation: This clone was engineered to express the complete ORF with an expression tag. Expression varies depending on the nature of the gene.

- Components:** The ORF clone is ion-exchange column purified and shipped in a 2D barcoded Matrix tube containing 10ug of transfection-ready, dried plasmid DNA (reconstitute with 100 ul of water).
- Reconstitution Method:**
1. Centrifuge at 5,000xg for 5min.
 2. Carefully open the tube and add 100ul of sterile water to dissolve the DNA.
 3. Close the tube and incubate for 10 minutes at room temperature.
 4. Briefly vortex the tube and then do a quick spin (less than 5000xg) to concentrate the liquid at the bottom.
 5. Store the suspended plasmid at -20°C. The DNA is stable for at least one year from date of shipping when stored at -20°C.
- RefSeq:** [NM_003658.5](#)
- RefSeq Size:** 1455 bp
- RefSeq ORF:** 840 bp
- Locus ID:** 8538
- UniProt ID:** [Q9UMQ3](#)
- Cytogenetics:** 11q24.3
- Protein Families:** Transcription Factors
- MW:** 31 kDa
- Gene Summary:** This gene encodes a member of the homeobox transcription factor family. A highly related protein in mouse has been shown to influence cellular processes that control cell adhesion and remodeling of the actin cytoskeleton in myoblast fusion and chondrogenesis. The encoded protein may also play a role in cancer progression. [provided by RefSeq, Jul 2008]

Product images:



Circular map for RC210128



Western blot validation of overexpression lysate (Cat# [LY418519]) using anti-DDK antibody (Cat# [TA50011-100]). Left: Cell lysates from untransfected HEK293T cells; Right: Cell lysates from HEK293T cells transfected with RC210128 using transfection reagent MegaTran 2.0 (Cat# [TT210002]).