

Product datasheet for RC210126

CELA2B (NM_015849) Human Tagged ORF Clone

Product data:

Product Type:	Expression Plasmids
Product Name:	CELA2B (NM_015849) Human Tagged ORF Clone
Tag:	Myc-DDK
Symbol:	CELA2B
Synonyms:	ELA2B
Mammalian Cell Selection:	Neomycin
Vector:	pCMV6-Entry (PS100001)
E. coli Selection:	Kanamycin (25 ug/mL)
ORF Nucleotide Sequence:	>RC210126 ORF sequence Red=Cloning site Blue=ORF Green=Tags(s)

TTTTGTAATACGACTCACTATAGGGCGGCCGGAATTCGTCGACTGGATCCGGTACCGAGGAGATCTGCC
GCC**CGATCGCC**

ATGATTAGGACCCTGCTGCTGTCCACTTTGGTGGCTGGAGCCCTCAGTTGTGGGGTCTCCACTTACGCGC
CTGATATGTCTAGGATGCTTGGAGGTGAAGAAGCGAGGCCAACAGCTGGCCCTGGCAGGTCTCCCTGCA
GTACAGCTCCAATGGCCAGTGGTACCACACCTGCGGAGGGTCCCTGATAGCCAACAGCTGGGTCTGACG
GCTGCCACTGCATCAGCTCCTCCGGATCTACCGGTGATGCTGGCCAGCATAACCTCTACGTTGCAG
AGTCCGGCTCGCTGGCCGTGAGTCTCTAAGATTGTGGTGCACAAGGACTGGAACCTCCGACCAGGTCTC
CAAAGGGAACGACATTGCCCTGCTCAAACCTGGCTAACCCCGTCTCCCTCACCGACAAGATCCAGCTGGCC
TGCTCCCTCCTGCCGGCACCATTCTACCCAACAACCTACCCTGCTACGTACCGGGTGGGGAAGGCTGC
AGACCAACGGGGCTCTCCCTGATGACCTGAAGCAGGGCCGGTTGCTGGTTGTGGACTATGCCACCTGCTC
CAGCTCTGGTGGTGGGGCAGCACCGTGAAGACGAATATGATCTGTGCTGGGGGTGATGGCGTATATGC
ACCTGCAACGGAGACTCCGGTGGCCGCTGAACTGTCAGGCATCTGACGGCCGGTGGGAGGTGCATGGCA
TCGGCAGCCTCACGTCGGTCTTGGTTGCAACTACTACAAGCCCTCCATCTTACGCGGGTCTCCAA
CTACAACGACTGGATCAATTCGGTGATTGCAAATAAC

ACGCGTACGCGGCCGCTCGAGCAGAAACTCATCTCAGAAGAGGATCTGGCAGCAAATGATATCCTGGATT
ACAAGGATGACGACGATAAGGTTTAA



[View online »](#)

Protein Sequence: >RC210126 protein sequence
Red=Cloning site Green=Tags(s)

MIRTL L L S T L V A G A L S C G V S T Y A P D M S R M L G G E E A R P N S W P W Q V S L Q Y S S N G Q W Y H T C G G S L I A N S W V L T
 A A H C I S S S G I Y R V M L G Q H N L Y V A E S G S L A V S V S K I V V H K D W N S D Q V S K G N D I A L L K L A N P V S L T D K I Q L A
 C L P P A G T I L P N N Y P C Y V T G W G R L Q T N G A L P D D L K Q G R L L V V D Y A T C S S S G W W G S T V K T N M I C A G G D G V I C
 T C N G D S G G P L N C Q A S D G R W E V H G I G S L T S V L G C N Y Y Y K P S I F T R V S N Y N D W I N S V I A N N

TRTRPLEQKLISEEDLAANDILDYKDDDDKV

Chromatograms: https://cdn.origene.com/chromatograms/mk6370_c10.zip

Restriction Sites: SgfI-MluI

Cloning Scheme:

Cloning sites used for ORF Shuttling:



* The last codon before the Stop codon of the ORF

ACCN: NM_015849

ORF Size: 807 bp

OTI Disclaimer: The molecular sequence of this clone aligns with the gene accession number as a point of reference only. However, individual transcript sequences of the same gene can differ through naturally occurring variations (e.g. polymorphisms), each with its own valid existence. This clone is substantially in agreement with the reference, but a complete review of all prevailing variants is recommended prior to use. [More info](#)

OTI Annotation: This clone was engineered to express the complete ORF with an expression tag. Expression varies depending on the nature of the gene.

Components: The ORF clone is ion-exchange column purified and shipped in a 2D barcoded Matrix tube containing 10ug of transfection-ready, dried plasmid DNA (reconstitute with 100 ul of water).

Reconstitution Method:

1. Centrifuge at 5,000xg for 5min.
2. Carefully open the tube and add 100ul of sterile water to dissolve the DNA.
3. Close the tube and incubate for 10 minutes at room temperature.
4. Briefly vortex the tube and then do a quick spin (less than 5000xg) to concentrate the liquid at the bottom.
5. Store the suspended plasmid at -20°C. The DNA is stable for at least one year from date of shipping when stored at -20°C.

RefSeq: [NM_015849.2](#), [NP_056933.2](#)

RefSeq Size: 941 bp

RefSeq ORF: 810 bp

Locus ID: 51032

UniProt ID: [P08218](#)

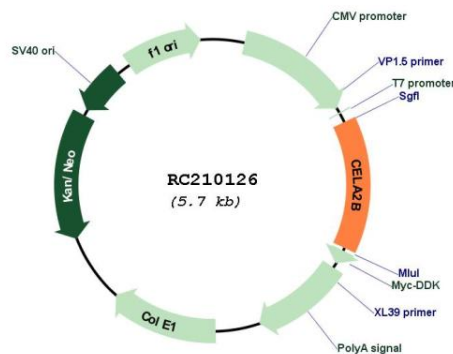
Cytogenetics: 1p36.21

Protein Families: Druggable Genome, Secreted Protein

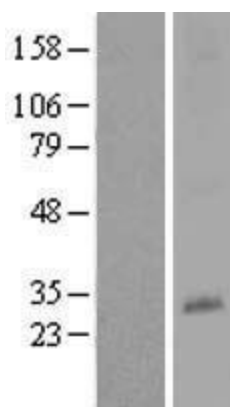
MW: 28.8 kDa

Gene Summary: Elastases form a subfamily of serine proteases that hydrolyze many proteins in addition to elastin. Humans have six elastase genes which encode the structurally similar proteins elastase 1, 2, 2A, 2B, 3A, and 3B. Like most of the human elastases, elastase 2B is secreted from the pancreas as a zymogen. In other species, elastase 2B has been shown to preferentially cleave proteins after leucine, methionine, and phenylalanine residues. [provided by RefSeq, Jul 2008]

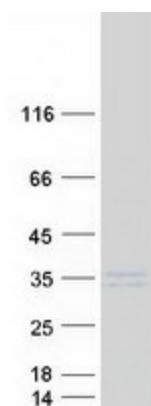
Product images:



Circular map for RC210126



Western blot validation of overexpression lysate (Cat# [LY414375]) using anti-DDK antibody (Cat# [TA50011-100]). Left: Cell lysates from untransfected HEK293T cells; Right: Cell lysates from HEK293T cells transfected with RC210126 using transfection reagent MegaTran 2.0 (Cat# [TT210002]).



Coomassie blue staining of purified CELA2B protein (Cat# [TP310126]). The protein was produced from HEK293T cells transfected with CELA2B cDNA clone (Cat# RC210126) using MegaTran 2.0 (Cat# [TT210002]).