

Product datasheet for RC210124

LIM2 (NM_030657) Human Tagged ORF Clone

Product data:

| | |
|---------------------------|---|
| Product Type: | Expression Plasmids |
| Product Name: | LIM2 (NM_030657) Human Tagged ORF Clone |
| Tag: | Myc-DDK |
| Symbol: | LIM2 |
| Synonyms: | CTRCT19; MP17; MP19 |
| Mammalian Cell Selection: | Neomycin |
| Vector: | pCMV6-Entry (PS100001) |
| E. coli Selection: | Kanamycin (25 ug/mL) |
| ORF Nucleotide Sequence: | >RC210124 ORF sequence Red=Cloning site Blue=ORF Green=Tags(s) |

TTTTGTAATACGACTCACTATAGGGCGCCGGAATTCGTCGACTGGATCCGGTACCGAGGAGATCTGCC
GCC**CGATCGCC**

ATGTACAGCTTCATGGGTGGTGGCCTGTTCTGTGCCTGGGTGGGACCATCCTCCTGGTGGTGGCCATGG
CAACAGACCACTGGATGCAGTACCGGCTGTGAGGGTCTTCGCCCACCAGGGCCTGTGGCGGTACTGCCT
GGGCAACAAGTGTACCTGCAGACAGACAGCATCGGTGAGCCCCCGCCAGGGTCCAGGCCGCGCCTGG
GGAAAGAGCAGGGCGGACCTCGGGGCCAAGGACACCTGTATTCCAGATGGAGAACTCTGCGGCTCAAAG
AGGGAAAGGGAGCAACCAAGCATACTGGAATGCCACCCGGGCTTCATGATCCTGTCTGCCCTATGCGC
CATCTCCGGCATCATCATGGGCATCATGGCCTTCGCTCATCAGCCTACCTTCTCCCGCATCTCCCGGCC
TTCTCTGCTGGCATCATGTTTTTTTCTCAACCTTTTCGTCGTGTTGGCCTTGGCCATCTACACTGGAG
TCACCGTCAGCTTCTGGGCCGCGCTTTGGGACTGGCGCTTTTCTGGTCTACATCCTGGGCTGGGT
GGCAGTGCTCATGACGTTCTTCGAGGGATTTTCTACATGTGCGCCTACCGGGTGCATGAATGCCGGCGC
CTGTCTACACCCCGC

ACGCGTACGCGGCCGCTCGAGCAGAACTCATCTCAGAAGAGGATCTGGCAGCAAATGATATCCTGGATT
ACAAGGATGACGACGATAAGGTTTAA



[View online »](#)

Reconstitution Method:

1. Centrifuge at 5,000xg for 5min.
2. Carefully open the tube and add 100ul of sterile water to dissolve the DNA.
3. Close the tube and incubate for 10 minutes at room temperature.
4. Briefly vortex the tube and then do a quick spin (less than 5000xg) to concentrate the liquid at the bottom.
5. Store the suspended plasmid at -20°C. The DNA is stable for at least one year from date of shipping when stored at -20°C.

RefSeq: [NM_030657.4](#)

RefSeq Size: 1001 bp

RefSeq ORF: 648 bp

Locus ID: 3982

UniProt ID: [P55344](#)

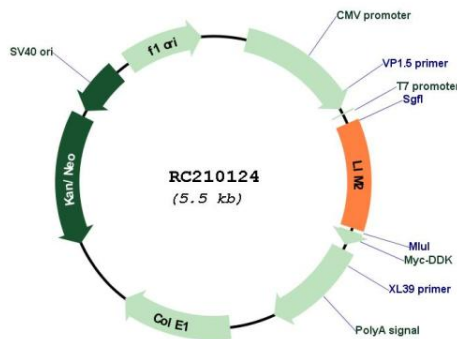
Cytogenetics: 19q13.41

Protein Families: Druggable Genome, Transmembrane

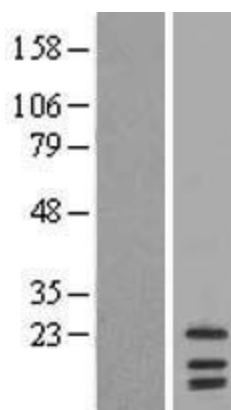
MW: 24.2 kDa

Gene Summary: This gene encodes an eye lens-specific protein found at the junctions of lens fiber cells, where it may contribute to cell junctional organization. It acts as a receptor for calmodulin, and may play an important role in both lens development and cataractogenesis. Mutations in this gene have been associated with cataract formation. Alternatively spliced transcript variants encoding different isoforms have been found for this gene.[provided by RefSeq, Sep 2009]

Product images:



Circular map for RC210124



Western blot validation of overexpression lysate (Cat# [LY410753]) using anti-DDK antibody (Cat# [TA50011-100]). Left: Cell lysates from untransfected HEK293T cells; Right: Cell lysates from HEK293T cells transfected with RC210124 using transfection reagent MegaTran 2.0 (Cat# [TT210002]).