

Product datasheet for RC210122

Interferon alpha 6 (IFNA6) (NM_021002) Human Tagged ORF Clone

Product data:

Product Type: Expression Plasmids
Product Name: Interferon alpha 6 (IFNA6) (NM_021002) Human Tagged ORF Clone
Tag: Myc-DDK
Symbol: Interferon alpha 6
Synonyms: IFN-alphaK
Mammalian Cell Selection: Neomycin
Vector: pCMV6-Entry (PS100001)
E. coli Selection: Kanamycin (25 ug/mL)
ORF Nucleotide Sequence: >RC210122 ORF sequence
 Red=Cloning site Blue=ORF Green=Tags(s)

TTTTGTAATACGACTCACTATAGGGCGGCCGGAATTCGTCGACTGGATCCGGTACCGAGGAGATCTGCC
 GCCCGATCGCC

ATGGCTTTGCCTTTTGTCTTACTGATGGCCCTGGTGGTGTCTCAGCTGCAAGTCAAGCTGCTCTGGACT
 GTGATCTGCCTCAGACCCACAGCCTGGGTACAGGAGGACCATGATGCTCCTGGCACAAATGAGGAGAAT
 CTCTCTTTTCTCCTGTCTGAAGGACAGACATGACTTCAGATTTCCCAGGAGGAGTTTGATGGCAACCAG
 TTCCAGAAGGCTGAAGCCATCTGTCTCCTCATGAGGTGATTCAGCAGACCTTCAACCTCTTCAGACAA
 AGGACTCATCTGTTGCTTGGGATGAGAGGCTTCTAGACAACTCTATACTGAACCTTACCAGCAGCTGAA
 TGACCTGGAAGCCTGTGTGATGCAGGAGGTGTGGGTGGGAGGGACTCCCCTGATGAATGAGGACTCCATC
 CTGGCTGTGAGAAAATACTTCAAAGAATCACTCTCTACCTGACAGAGAAAAAGTACAGCCCTTGTGCC
 GGGAGGTTGTGAGAGCAGAAATCATGAGATCCTTCTTCATCAAGAACTTGAAGAAAGGTTAAGGAG
 GAAGGAAT

ACGCGTACGCGGCCGCTCGAGCAGAACTCATCTCAGAAGAGGATCTGGCAGCAATGATATCCTGGATT
 ACAAGGATGACGACGATAAGGTTTAA

Protein Sequence: >RC210122 protein sequence
 Red=Cloning site Green=Tags(s)

MALPFALLMALVVL SCKSSCSLDCDLPQTHSLGHRRTMMLLAQMRRISLFSCLKDRHDFRFPQEEFDGNQ
 FQKAEAISVLHEVIQQTFNLFSTKDSVAVDERLLDKLYTEL YQQLNDLEACVMQEVVWGGTPLMNEDSI
 LAVRKYFQRITLYLTEKKYSPCAWEVRAEIMRSFSSSRNLQERLRRKE

TRTRPLEQKLI SEEDLAANDILDYKDDDDKV



[View online »](#)

Chromatograms: https://cdn.origene.com/chromatograms/mk6370_c06.zip

Restriction Sites: SgfI-MluI

Cloning Scheme:



ACCN: NM_021002

ORF Size: 568 bp

OTI Disclaimer: The molecular sequence of this clone aligns with the gene accession number as a point of reference only. However, individual transcript sequences of the same gene can differ through naturally occurring variations (e.g. polymorphisms), each with its own valid existence. This clone is substantially in agreement with the reference, but a complete review of all prevailing variants is recommended prior to use. [More info](#)

OTI Annotation: This clone was engineered to express the complete ORF with an expression tag. Expression varies depending on the nature of the gene.

Components: The ORF clone is ion-exchange column purified and shipped in a 2D barcoded Matrix tube containing 10ug of transfection-ready, dried plasmid DNA (reconstitute with 100 ul of water).

Reconstitution Method:

1. Centrifuge at 5,000xg for 5min.
2. Carefully open the tube and add 100ul of sterile water to dissolve the DNA.
3. Close the tube and incubate for 10 minutes at room temperature.
4. Briefly vortex the tube and then do a quick spin (less than 5000xg) to concentrate the liquid at the bottom.
5. Store the suspended plasmid at -20°C. The DNA is stable for at least one year from date of shipping when stored at -20°C.

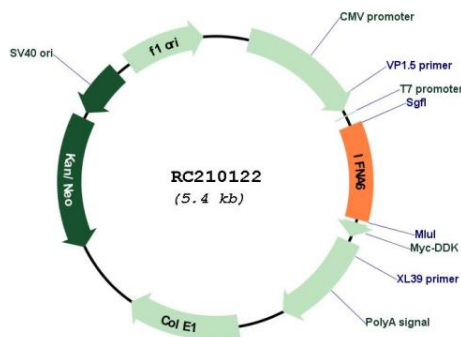
Note: Plasmids are not sterile. For experiments where strict sterility is required, filtration with 0.22um filter is required.

RefSeq: [NM_021002.2](#), [NP_066282.1](#)

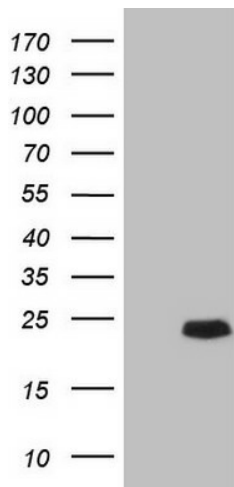
RefSeq Size: 570 bp

RefSeq ORF:	570 bp
Locus ID:	3443
UniProt ID:	P05013
Cytogenetics:	9p21.3
Protein Families:	Druggable Genome, Secreted Protein
Protein Pathways:	Antigen processing and presentation, Autoimmune thyroid disease, Cytokine-cytokine receptor interaction, Cytosolic DNA-sensing pathway, Jak-STAT signaling pathway, Natural killer cell mediated cytotoxicity, Regulation of autophagy, RIG-I-like receptor signaling pathway, Toll-like receptor signaling pathway
MW:	22.1 kDa
Gene Summary:	Produced by macrophages, IFN-alpha have antiviral activities. Interferon stimulates the production of two enzymes: a protein kinase and an oligoadenylate synthetase. [UniProtKB/Swiss-Prot Function]

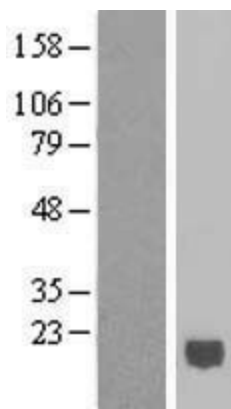
Product images:



Circular map for RC210122



HEK293T cells were transfected with the pCMV6-ENTRY control (Cat# [PS100001], Left lane) or pCMV6-ENTRY IFNA6 (Cat# RC210122, Right lane) cDNA for 48 hrs and lysed. Equivalent amounts of cell lysates (5 ug per lane) were separated by SDS-PAGE and immunoblotted with anti-IFNA6 (Cat# [TA808247])(1:2000). Positive lysates [LY412098] (100ug) and [LC412098] (20ug) can be purchased separately from OriGene.



Western blot validation of overexpression lysate (Cat# [LY412098]) using anti-DDK antibody (Cat# [TA50011-100]). Left: Cell lysates from untransfected HEK293T cells; Right: Cell lysates from HEK293T cells transfected with RC210122 using transfection reagent MegaTran 2.0 (Cat# [TT210002]).