

Product datasheet for **RC210119**

GAGE1 (NM_001040663) Human Tagged ORF Clone

Product data:

Product Type: Expression Plasmids
Product Name: GAGE1 (NM_001040663) Human Tagged ORF Clone
Tag: Myc-DDK
Symbol: GAGE1
Synonyms: CT4.1; CT4.4; GAGE-1; GAGE-4; GAGE4
Mammalian Cell Selection: Neomycin
Vector: pCMV6-Entry (PS100001)
E. coli Selection: Kanamycin (25 ug/mL)
ORF Nucleotide Sequence: >RC210119 ORF sequence
Red=Cloning site Blue=ORF Green=Tags(s)

TTTTGTAATACGACTCACTATAGGGCGCCGGGAATTCGTCGACTGGATCCGGTACCGAGGAGATCTGCC
GCC**CGATCGCC**

ATGAGTTGGCGAGGAAGATCGACCTATTATTGGCCTAGACCAAGGCGCTATGTACAGCCTCCTGAAATGA
TTGGCCATGCGGCCGAGCAGTTCAGTGATGAAGTGAACAGCAACACCTGAAGAAGGGGAACCAGC
AACTCAACGTGAGGATCCTGCAGCTGCTCAGGAGGAGAGGATGAGGGAGCATCTGCAGGTCAAGGGCCG
AAGCCTGAAGCTGATAGCCAGGAACAGGGTCACCCACAGACTGGGTGTGAGTGTGAAGATGGTCTGATG
GGCAGGAGATGGACCCGCAAATCCAGAGGAGGTGAAAACGCCTGAAGAAGGTGAAGGGCAATCACAGTG
T

ACGCGTACGCGGCCGCTCGAGCAGAACTCATCTCAGAAGAGGATCTGGCAGCAAATGATATCCTGGATT
ACAAGGATGACGACGATAAGGTTTAA

Protein Sequence: >RC210119 protein sequence
Red=Cloning site Green=Tags(s)

MSWRGRSTYYWPRPRRYVQPPEMIGPMRPEQFSDEVEPATPEEGEPATQRQDPAAAQEGEDEGASAGQGP
KPEADSQEQGHPQTGCECEDGPDGQEMDPPNPEEVKTPEEGEGQSQC

TRTRPLEQKLISEEDLAANDILDYKDDDDKV

Chromatograms: https://cdn.origene.com/chromatograms/mk6370_f05.zip

Restriction Sites: SgfI-MluI



[View online »](#)

Cloning Scheme:


ACCN: NM_001040663

ORF Size: 351 bp

OTI Disclaimer: The molecular sequence of this clone aligns with the gene accession number as a point of reference only. However, individual transcript sequences of the same gene can differ through naturally occurring variations (e.g. polymorphisms), each with its own valid existence. This clone is substantially in agreement with the reference, but a complete review of all prevailing variants is recommended prior to use. [More info](#)

OTI Annotation: This clone was engineered to express the complete ORF with an expression tag. Expression varies depending on the nature of the gene.

Components: The ORF clone is ion-exchange column purified and shipped in a 2D barcoded Matrix tube containing 10ug of transfection-ready, dried plasmid DNA (reconstitute with 100 ul of water).

- Reconstitution Method:**
1. Centrifuge at 5,000xg for 5min.
 2. Carefully open the tube and add 100ul of sterile water to dissolve the DNA.
 3. Close the tube and incubate for 10 minutes at room temperature.
 4. Briefly vortex the tube and then do a quick spin (less than 5000xg) to concentrate the liquid at the bottom.
 5. Store the suspended plasmid at -20°C. The DNA is stable for at least one year from date of shipping when stored at -20°C.

RefSeq: [NM_001040663.2](#), [NP_001035753.1](#)

RefSeq Size: 3014 bp

RefSeq ORF: 354 bp

Locus ID: 2543

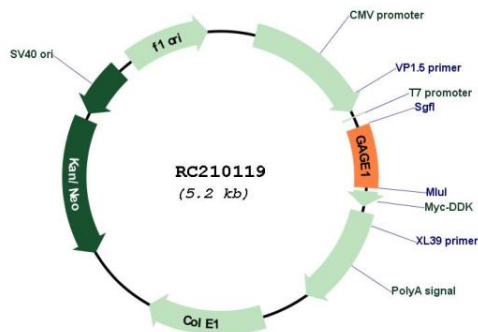
UniProt ID: [Q13065](#)

Cytogenetics: Xp11.23

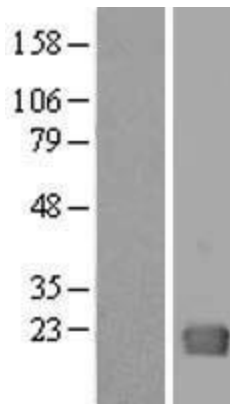
MW: 12.9 kDa

Gene Summary: This gene belongs to a family of genes that are expressed in a variety of tumors but not in normal tissues, except for the testis. The sequences of the family members are highly related but differ by scattered nucleotide substitutions. The antigenic peptide YRPRPRRY, which is also encoded by several other family members, is recognized by autologous cytolytic T lymphocytes. Nothing is presently known about the function of this protein. Alternative splicing results in multiple transcript variants. [provided by RefSeq, Jun 2010]

Product images:



Circular map for RC210119



Western blot validation of overexpression lysate (Cat# [LY421804]) using anti-DDK antibody (Cat# [TA50011-100]). Left: Cell lysates from untransfected HEK293T cells; Right: Cell lysates from HEK293T cells transfected with RC210119 using transfection reagent MegaTran 2.0 (Cat# [TT210002]).