

Product datasheet for RC210111

CER1 (NM_005454) Human Tagged ORF Clone

Product data:

Product Type:	Expression Plasmids
Product Name:	CER1 (NM_005454) Human Tagged ORF Clone
Tag:	Myc-DDK
Symbol:	CER1
Synonyms:	DAND4
Mammalian Cell Selection:	Neomycin
Vector:	pCMV6-Entry (PS100001)
E. coli Selection:	Kanamycin (25 ug/mL)
ORF Nucleotide Sequence:	>RC210111 representing NM_005454. Blue=ORF Red=Cloning site Green=Tag(s)

```

GCTCGTTTAGTGAACCGTCAGAATTTTGTAAACGACTCACTATAGGGCGGCCGGGAATTCGTCGACTG
GATCCGGTACCGAGGAGATCTGCCGCCGCGATCGCC
ATGCATCTCCTCTTATTTTCAGCTGCTGGTACTCCTGCCTCTAGGAAAGACCACACGGCACCAGGATGGC
CGCCAGAATCAGAGTTCTCTTTCCCCCGTACTCCTGCCAAGGAATCAAAGAGAGCTTCCACAGGCAAC
CATGAGGAAGCTGAGGAGAAGCCAGATCTGTTTGTGCGAGTGCCACACCTTGTAGGCACCAGCCCTGCA
GGGGAAGGCCAGAGGCAGAGAGAGAAGATGCTGTCCAGATTTGGCAGGTTCTGGAAGAAGCCTGAGAGA
GAAATGCATCCATCCAGGACTCAGATAGTGAGCCCTTCCACCTGGGACCCAGTCCCTCATCCAGCCG
ATAGATGGAATGAAATGGAGAAATCTCCTCTTCGGGAAGAAGCCAAGAAATTCTGGCACCATTTCATG
TTCAGAAAAACTCCGGCTTCTCAGGGGGTCATCTTGCCCATCAAAGCCATGAAGTACATTGGGAGACC
TGCAGGACAGTGCCCTTCAGCCAGACTATAACCCACGAAGGCTGTGAGAAAGTAGTTGTTTCAAGAAC
CTTTGCTTTGGGAAATGCGGGTCTGTTTCTTTTCTGGAGCCGCGCAGCACTCCCATACCTCCTGCTCT
CACTGTTTGCCTGCCAAGTTCACCACGATGCACTTGCCAGTGAAGTGAAGTGAAGTGAAGTGAAGTGAAGT
AAGGTGGTGATGCTGGTGGAGGAGTGCCAGTGCAAGGTGAAGACGGAGCATGAAGATGGACATCCTA
CATGCTGGCTCCAGGATTCCTTTATCCAGGAGTTTCAGCT
ACGCGTACGCGGCCGCTCGAGCAGAACTCATCTCAGAGAGGATCTGGCAGCAAATGATATCCTGGAT
TACAAGGATGACGACGATAAGGTTTAAACGGCCGGC
  
```


[View online »](#)

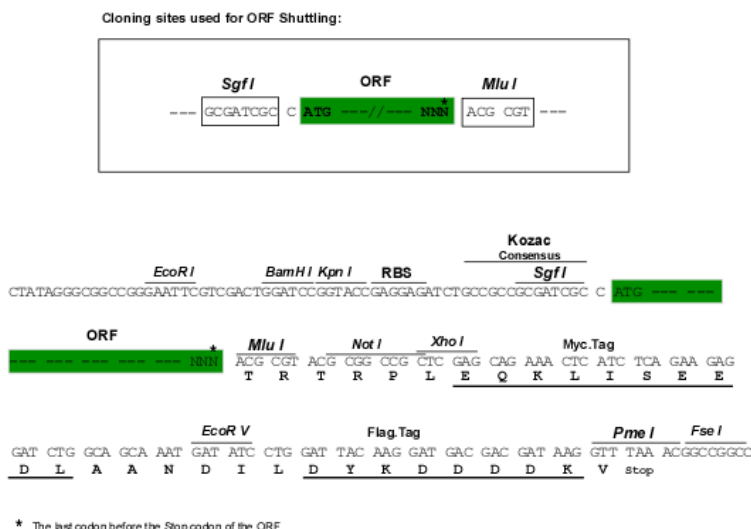
Protein Sequence: >Peptide sequence encoded by RC210111
 Blue=ORF Red=Cloning site Green=Tag(s)

MHLLLFQLLVLLPLGKTRHQDGRQNQSSLSPLVLLPRNQRELPTGNHEEAEEKPDLFVAVPHLVGTSPA
 GEGQRQREKMLSRFGRFWKKPEREMHPSRDSDEPFPPGTQSLIQPIDGMKMEKSPLREEAKKFWHHFM
 FRKTPASQGVILPIKSHEVHWETCRTVPFSQTIHEGCEKVVVQNNLCFGKCGSVHFPGAQHSHTSCS
 HCLPAKFTTMHLPVNCTELSSVIKVVMLVEECQCKVKTEHEDGHILHAGSQDSFIPGVSA
 TRTRPLEQKLISEEDLAANDILDYKDDDDKV

Chromatograms: https://cdn.origene.com/chromatograms/mk6721_e11.zip

Restriction Sites: SgfI-MluI

Cloning Scheme:



ACCN: NM_005454

ORF Size: 801 bp

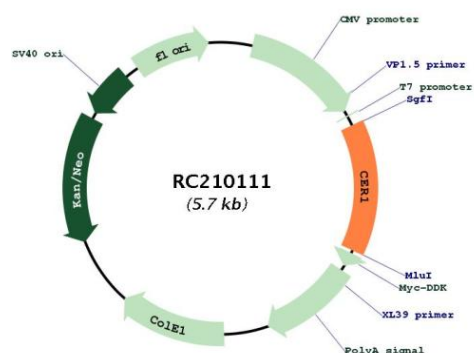
OTI Disclaimer: The molecular sequence of this clone aligns with the gene accession number as a point of reference only. However, individual transcript sequences of the same gene can differ through naturally occurring variations (e.g. polymorphisms), each with its own valid existence. This clone is substantially in agreement with the reference, but a complete review of all prevailing variants is recommended prior to use. [More info](#)

OTI Annotation: This clone was engineered to express the complete ORF with an expression tag. Expression varies depending on the nature of the gene.

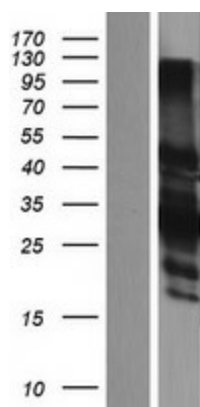
Components: The ORF clone is ion-exchange column purified and shipped in a 2D barcoded Matrix tube containing 10ug of transfection-ready, dried plasmid DNA (reconstitute with 100 ul of water).

Reconstitution Method:	<ol style="list-style-type: none"> 1. Centrifuge at 5,000xg for 5min. 2. Carefully open the tube and add 100ul of sterile water to dissolve the DNA. 3. Close the tube and incubate for 10 minutes at room temperature. 4. Briefly vortex the tube and then do a quick spin (less than 5000xg) to concentrate the liquid at the bottom. 5. Store the suspended plasmid at -20°C. The DNA is stable for at least one year from date of shipping when stored at -20°C.
RefSeq Size:	1206 bp
RefSeq ORF:	804 bp
Locus ID:	9350
UniProt ID:	O95813
Cytogenetics:	9p22.3
Protein Families:	Secreted Protein
Protein Pathways:	Wnt signaling pathway
MW:	30.1 kDa
Gene Summary:	This gene encodes a cytokine member of the cysteine knot superfamily, characterized by nine conserved cysteines and a cysteine knot region. The cerberus-related cytokines, together with Dan and DRM/Gremlin, represent a group of bone morphogenetic protein (BMP) antagonists that can bind directly to BMPs and inhibit their activity. [provided by RefSeq, Jul 2008]

Product images:



Circular map for RC210111



Western blot validation of overexpression lysate (Cat# [LY417294]) using anti-DDK antibody (Cat# [TA50011-100]). Left: Cell lysates from un-transfected HEK293T cells; Right: Cell lysates from HEK293T cells transfected with RC210111 using transfection reagent MegaTran 2.0 (Cat# [TT210002]).