

## Product datasheet for **RC210109**

### IL3 (NM\_000588) Human Tagged ORF Clone

#### Product data:

**Product Type:** Expression Plasmids  
**Product Name:** IL3 (NM\_000588) Human Tagged ORF Clone  
**Tag:** Myc-DDK  
**Symbol:** IL3  
**Synonyms:** IL-3; MCGF; MULTI-CSF  
**Mammalian Cell Selection:** Neomycin  
**Vector:** pCMV6-Entry (PS100001)  
**E. coli Selection:** Kanamycin (25 ug/mL)  
**ORF Nucleotide Sequence:** >RC210109 ORF sequence  
Red=Cloning site Blue=ORF Green=Tags(s)

TTTTGTAATACGACTCACTATAGGGCGGCCGGAATTCGTCGACTGGATCCGGTACCGAGGAGATCTGCC  
GCC**CGATCGCC**

ATGAGCCGCTGCCCGTCTGCTCCTGCTCCAACCTCTGGTCCGCCCGGACTCCAAGCTCCCATGACCC  
AGACAACGCCCTGAAGACAAGCTGGGTTAACTGCTCTAACATGATCGATGAAATTATAACACACTTAAA  
GCAGCCACCTTTGCCTTTGCTGGACTTCAACAACCTCAATGGGGAAGACCAAGACATTCTGATGGAAAAT  
AACCTTGAAGGCCAAACCTGGAGGCATTCAACAGGGCTGTCAAGAGTTTACAGAACGCATCAGCAATTG  
AGAGCATTCTTAAAAATCTCCTGCCATGTCTGCCCTGGCCACGGCCGCCACCCACGCGACATCCAATCCA  
TATCAAGGACGGTGACTGGAATGAATCCGGAGGAAACTGACGTTCTATCTGAAAACCTTGAGAATGCG  
CAGGCTCAACAGACGACTTTGAGCTCGCGATCTTT

**ACGCGT**ACGCGGCCGCTCGAGCAGAACTCATCTCAGAAGAGGATCTGGCAGCAAATGATATCCTGGATT  
ACAAGGATGACGACGATAAGGTTTAA

**Protein Sequence:** >RC210109 protein sequence  
Red=Cloning site Green=Tags(s)

MSRLPVLLLLQLLVRPGLQAPMTQTTPPKTSWVNCNSMIDEIITHLKPPLPLLDFFNNLNGEDQDILMEN  
NLRRPNLEAFNRVAVKSLQNASAIESILKNLLPCLPLATAAPTRHPHIIKIDGDWNEFRRLTFYFKLENA  
QAQQTLSLAIF

**TR**TRPLEQKLISEEDLAANDILDYKDDDDKV

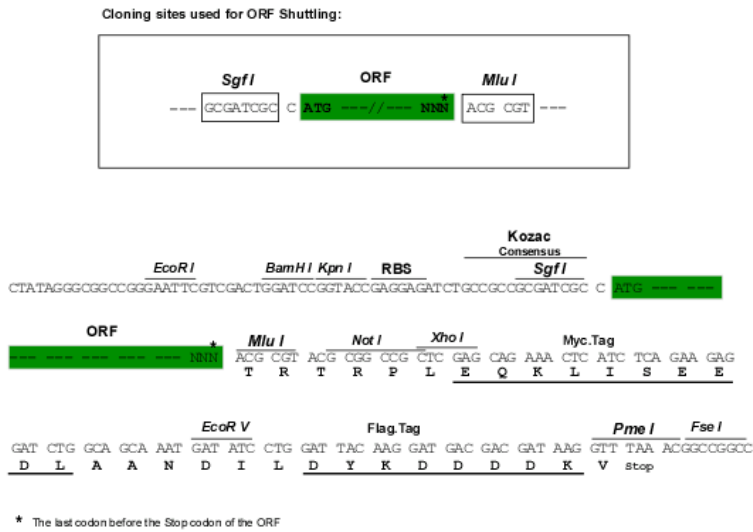
**Chromatograms:** [https://cdn.origene.com/chromatograms/mk6266\\_f05.zip](https://cdn.origene.com/chromatograms/mk6266_f05.zip)



[View online »](#)

Restriction Sites: SgfI-MluI

Cloning Scheme:



ACCN: NM\_000588

ORF Size: 456 bp

OTI Disclaimer: Due to the inherent nature of this plasmid, standard methods to replicate additional amounts of DNA in E. coli are highly likely to result in mutations and/or rearrangements. Therefore, OriGene does not guarantee the capability to replicate this plasmid DNA. Additional amounts of DNA can be purchased from OriGene with batch-specific, full-sequence verification at a reduced cost. Please contact our customer care team at [custsupport@origene.com](mailto:custsupport@origene.com) or by calling 301.340.3188 option 3 for pricing and delivery.

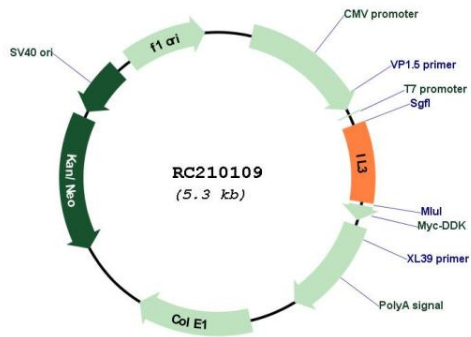
The molecular sequence of this clone aligns with the gene accession number as a point of reference only. However, individual transcript sequences of the same gene can differ through naturally occurring variations (e.g. polymorphisms), each with its own valid existence. This clone is substantially in agreement with the reference, but a complete review of all prevailing variants is recommended prior to use. [More info](#)

OTI Annotation: This clone was engineered to express the complete ORF with an expression tag. Expression varies depending on the nature of the gene.

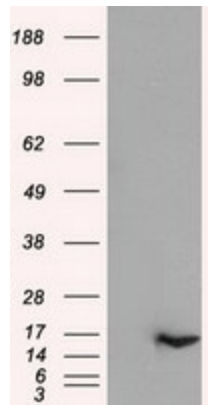
Components: The ORF clone is ion-exchange column purified and shipped in a 2D barcoded Matrix tube containing 10ug of transfection-ready, dried plasmid DNA (reconstitute with 100 ul of water).

<b>Reconstitution Method:</b>	<ol style="list-style-type: none"><li>1. Centrifuge at 5,000xg for 5min.</li><li>2. Carefully open the tube and add 100ul of sterile water to dissolve the DNA.</li><li>3. Close the tube and incubate for 10 minutes at room temperature.</li><li>4. Briefly vortex the tube and then do a quick spin (less than 5000xg) to concentrate the liquid at the bottom.</li><li>5. Store the suspended plasmid at -20°C. The DNA is stable for at least one year from date of shipping when stored at -20°C.</li></ol>
<b>Note:</b>	Plasmids are not sterile. For experiments where strict sterility is required, filtration with 0.22um filter is required.
<b>RefSeq:</b>	<a href="#">NM_000588.4</a>
<b>RefSeq Size:</b>	924 bp
<b>RefSeq ORF:</b>	459 bp
<b>Locus ID:</b>	3562
<b>UniProt ID:</b>	<a href="#">P08700</a>
<b>Cytogenetics:</b>	5q31.1
<b>Protein Families:</b>	Druggable Genome, Secreted Protein
<b>Protein Pathways:</b>	Apoptosis, Asthma, Cytokine-cytokine receptor interaction, Fc epsilon RI signaling pathway, Hematopoietic cell lineage, Jak-STAT signaling pathway
<b>MW:</b>	17.2 kDa
<b>Gene Summary:</b>	The protein encoded by this gene is a potent growth promoting cytokine. This cytokine is capable of supporting the proliferation of a broad range of hematopoietic cell types. It is involved in a variety of cell activities such as cell growth, differentiation and apoptosis. This cytokine has been shown to also possess neurotrophic activity, and it may be associated with neurologic disorders. [provided by RefSeq, Jul 2008]

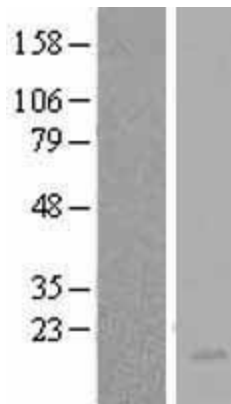
Product images:



Circular map for RC210109



HEK293T cells were transfected with the pCMV6-ENTRY control (Cat# [PS100001], Left lane) or pCMV6-ENTRY IL-3 (Cat# RC210109, Right lane) cDNA for 48 hrs and lysed. Equivalent amounts of cell lysates (5 ug per lane) were separated by SDS-PAGE and immunoblotted with anti-IL-3 (Cat# [TA500182]). Positive lysates [LY424621] (100ug) and [LC424621] (20ug) can be purchased separately from OriGene.



Western blot validation of overexpression lysate (Cat# [LY424621]) using anti-DDK antibody (Cat# [TA50011-100]). Left: Cell lysates from untransfected HEK293T cells; Right: Cell lysates from HEK293T cells transfected with RC210109 using transfection reagent MegaTran 2.0 (Cat# [TT210002]).