

## Product datasheet for **RC210106**

### MOX1 (MEOX1) (NM\_004527) Human Tagged ORF Clone

#### Product data:

Product Type:	Expression Plasmids
Product Name:	MOX1 (MEOX1) (NM_004527) Human Tagged ORF Clone
Tag:	Myc-DDK
Symbol:	MOX1
Synonyms:	KFS2; MOX1
Mammalian Cell Selection:	Neomycin
Vector:	pCMV6-Entry (PS100001)
E. coli Selection:	Kanamycin (25 ug/mL)
ORF Nucleotide Sequence:	>RC210106 ORF sequence Red=Cloning site Blue=ORF Green=Tags(s)

TTTTGTAATACGACTCACTATAGGGCGGCCGGAATTCGTCGACTGGATCCGGTACCGAGGAGATCTGCC  
GCC**CGATCGCC**

ATGGATCCCGCGCCAGCAGCTGCATGAGGAGCCTCCAGCCCCAGCCCCTGTCTGGGGCTGCCTTCGAA  
ACCCCCACTCGGAAGGCAATGGGGCCTCAGGGCTACCCCACTACCCGCCACCCCGTTCTCCTTCCACCA  
GAAACCAGACTTCTGGCGACAGCGACGGCAGCGTACCCTGACTTCTCAGCCTCCTGCCTGGCAGCCACC  
CCACACAGCCTGCCCCAGGAGGAGCACATCTTCACTGAGCAGCACCCCGTTTCCACAGTCCCCAACT  
GGCACTTCCCTGTCTCAGACGCCCGCGCAGGCCAACTCAGGCCGGCAGGGGGTTCCAAGGAAATGGG  
GACCAGCAGCCTGGGCCTGGTGGACACCACAGGAGGCCAGGCGATGACTACGGGGTGTGGGAGCACT  
GCCAATGAGACAGAGAAGAAATCATCCAGGCGGAGAAAGGAGAGTTTCAACAACCAGGAGAACAGAGGGA  
AGCCGGAGGGCAGCAGCAAGGCCGCAAGGAGAGGACGGCCTTCAACAAGGAGCAGCTGCGAGAGCTGGA  
GGCAGAGTTTGGCCATCATAACTACCTGACTCGGCTCCGAGATATGAGATTGCGGTAACCTGGACCTC  
TCTGAGCGCCAGGTCAAAGTGTGGTTCCAGAACCAGGATGAAGTGAAGCGTGTGAAGGGAGGTGAGC  
CCATCTCCCCAATGGGCAGGACCCTGAGGATGGGGACTCCACAGCCTCTCCAAGTTCAGAG

**ACGCGT**ACGCGGCCGCTCGAGCAGAACTCATCTCAGAAGAGGATCTGGCAGCAAATGATATCCTGGATT  
ACAAGGATGACGACGATAAGGTTTAA



[View online »](#)

**Protein Sequence:** >RC210106 protein sequence  
Red=Cloning site Green=Tags(s)

MDPAASSCMRSLQPPAPVWGCLRNPHEGNGASGLPHYPPTPF SFHQKPDFLATATAAYPDFSASCLAAT  
 PHSLPQEEHIFTEQHPAFQSPNWHFPVSDARRRPNSGPAGGSKEMGTSSLGLVDTTGGPGDDYGVLGST  
 ANETEKSSRRRKESSDNQENRGKPEGSSKARKERTAF TKEQLRELEAEFAHNNYLTRLRRYEIAVNLDL  
 SERQVKVWFQNRMRKWKRVKGGQPI SPNGQDPEDGDSTASPSSE

TRTRPLEQKLISEEDLAANDILDYKDDDDKV

**Chromatograms:** [https://cdn.origene.com/chromatograms/mk6370\\_h10.zip](https://cdn.origene.com/chromatograms/mk6370_h10.zip)

**Restriction Sites:** SgfI-MluI

**Cloning Scheme:**



**ACCN:** NM\_004527

**ORF Size:** 762 bp

**OTI Disclaimer:** The molecular sequence of this clone aligns with the gene accession number as a point of reference only. However, individual transcript sequences of the same gene can differ through naturally occurring variations (e.g. polymorphisms), each with its own valid existence. This clone is substantially in agreement with the reference, but a complete review of all prevailing variants is recommended prior to use. [More info](#)

**OTI Annotation:** This clone was engineered to express the complete ORF with an expression tag. Expression varies depending on the nature of the gene.

**Components:** The ORF clone is ion-exchange column purified and shipped in a 2D barcoded Matrix tube containing 10ug of transfection-ready, dried plasmid DNA (reconstitute with 100 ul of water).

**Reconstitution Method:**

1. Centrifuge at 5,000xg for 5min.
2. Carefully open the tube and add 100ul of sterile water to dissolve the DNA.
3. Close the tube and incubate for 10 minutes at room temperature.
4. Briefly vortex the tube and then do a quick spin (less than 5000xg) to concentrate the liquid at the bottom.
5. Store the suspended plasmid at -20°C. The DNA is stable for at least one year from date of shipping when stored at -20°C.

**RefSeq:** [NM\\_004527.4](#)

**RefSeq Size:** 2330 bp

**RefSeq ORF:** 765 bp

**Locus ID:** 4222

**UniProt ID:** [P50221](#)

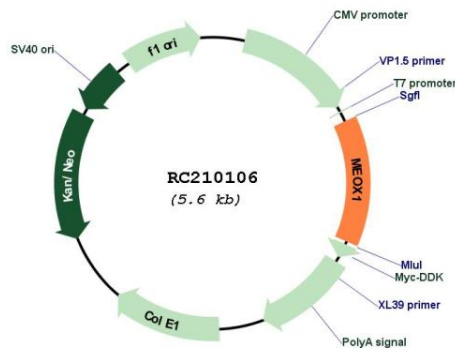
**Cytogenetics:** 17q21.31

**Protein Families:** Transcription Factors

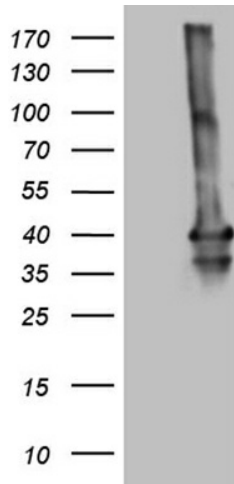
**MW:** 28 kDa

**Gene Summary:** This gene encodes a member of a subfamily of non-clustered, diverged, antennapedia-like homeobox-containing genes. The encoded protein may play a role in the molecular signaling network regulating somite development. Alternatively spliced transcript variants encoding different isoforms have been described. [provided by RefSeq, Jul 2008]

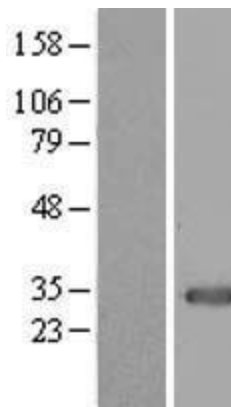
### Product images:



Circular map for RC210106



HEK293T cells were transfected with the pCMV6-ENTRY control (Cat# [PS100001], Left lane) or pCMV6-ENTRY MEOX1 (Cat# RC210106, Right lane) cDNA for 48 hrs and lysed. Equivalent amounts of cell lysates (5 ug per lane) were separated by SDS-PAGE and immunoblotted with anti-MEOX1 (Cat# [TA804716])(1:2000). Positive lysates [LY417902] (100ug) and [LC417902] (20ug) can be purchased separately from OriGene.



Western blot validation of overexpression lysate (Cat# [LY417902]) using anti-DDK antibody (Cat# [TA50011-100]). Left: Cell lysates from untransfected HEK293T cells; Right: Cell lysates from HEK293T cells transfected with RC210106 using transfection reagent MegaTran 2.0 (Cat# [TT210002]).



Coomassie blue staining of purified MEOX1 protein (Cat# [TP310106]). The protein was produced from HEK293T cells transfected with MEOX1 cDNA clone (Cat# RC210106) using MegaTran 2.0 (Cat# [TT210002]).