

Product datasheet for **RC210104**

RELM beta (RETNLB) (NM_032579) Human Tagged ORF Clone

Product data:

Product Type: Expression Plasmids
Product Name: RELM beta (RETNLB) (NM_032579) Human Tagged ORF Clone
Tag: Myc-DDK
Symbol: RELM beta
Synonyms: FIZZ1; FIZZ2; HXCP2; RELM-beta; RELMb; RELMbeta; XCP2
Mammalian Cell Selection: Neomycin
Vector: pCMV6-Entry (PS100001)
E. coli Selection: Kanamycin (25 ug/mL)
ORF Nucleotide Sequence: >RC210104 ORF sequence
Red=Cloning site Blue=ORF Green=Tags(s)

TTTTGTAATACGACTCACTATAGGGCGCCGGGAATTCGTCGACTGGATCCGGTACCGAGGAGATCTGCC
GCC**CGATCGCC**

ATGGGGCCGTCCTCTTGCCCTCTCTCATCCTAATCCCCCTTCTCCAGCTGATCAACCCGGGGAGTACTC
AGTGTTCCCTTAGACTCCGTTATGGATAAGAAGATCAAGGATGTTCTCAACAGTCTAGAGTACAGTCCCTC
TCCTATAAGCAAGAAGCTCTCGTGTGCTAGTGTCAAAGCCAAGGCAGACCGTCTCTGCCCTGCTGGG
ATGGCTGTCACTGGCTGTGCTTGTGGCTATGGCTGTGGTTCGTGGGATGTTCAAGTGGAAACACCTGCC
ACTGCCAGTGCAGTGTGGTGGACTGGACCCTGCCCGCTGCTGCCACCTGACC

ACGCGTACGCGGCCGCTCGAGCAGAAACTCATCTCAGAAGAGGATCTGGCAGCAAATGATATCCTGGATT
ACAAGGATGACGACGATAAGGTTTAA

Protein Sequence: >RC210104 protein sequence
Red=Cloning site Green=Tags(s)
MGPSSCLLLIIPLLQLINPGSTQCSLDSVMDKKIKDVLNSLEYSPIKKLSCASVKVSGRPS SCPAG
MAVTGCACGYGCGSWDVQLETTCHCQCSVVDWTTARCCHLT

TRTRPLEQKLISEEDLAANDILDYKDDDDKV

Chromatograms: https://cdn.origene.com/chromatograms/mk6266_g07.zip

Restriction Sites: SgfI-MluI



[View online »](#)

Cloning Scheme:


ACCN: NM_032579

ORF Size: 333 bp

OTI Disclaimer: The molecular sequence of this clone aligns with the gene accession number as a point of reference only. However, individual transcript sequences of the same gene can differ through naturally occurring variations (e.g. polymorphisms), each with its own valid existence. This clone is substantially in agreement with the reference, but a complete review of all prevailing variants is recommended prior to use. [More info](#)

OTI Annotation: This clone was engineered to express the complete ORF with an expression tag. Expression varies depending on the nature of the gene.

Components: The ORF clone is ion-exchange column purified and shipped in a 2D barcoded Matrix tube containing 10ug of transfection-ready, dried plasmid DNA (reconstitute with 100 ul of water).

Reconstitution Method:

1. Centrifuge at 5,000xg for 5min.
2. Carefully open the tube and add 100ul of sterile water to dissolve the DNA.
3. Close the tube and incubate for 10 minutes at room temperature.
4. Briefly vortex the tube and then do a quick spin (less than 5000xg) to concentrate the liquid at the bottom.
5. Store the suspended plasmid at -20°C. The DNA is stable for at least one year from date of shipping when stored at -20°C.

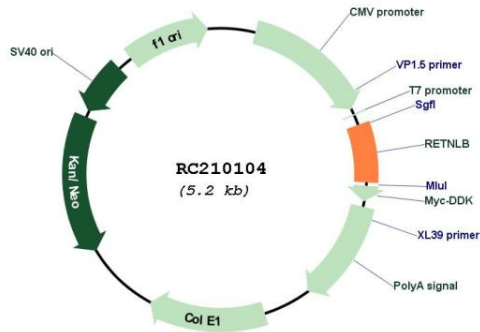
RefSeq: [NM_032579.2](#)

RefSeq Size: 594 bp

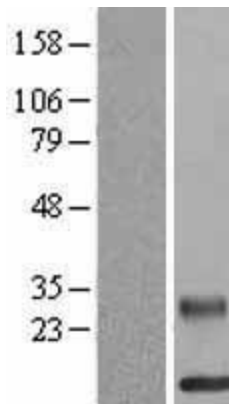
RefSeq ORF: 336 bp

Locus ID: 84666

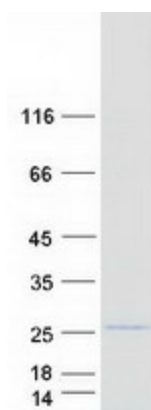
UniProt ID: [Q9BQ08](#)
Cytogenetics: 3q13.13
Protein Families: Secreted Protein
MW: 11.7 kDa
Gene Summary: Probable hormone.[UniProtKB/Swiss-Prot Function]

Product images:


Circular map for RC210104



Western blot validation of overexpression lysate (Cat# [LY410034]) using anti-DDK antibody (Cat# [TA50011-100]). Left: Cell lysates from untransfected HEK293T cells; Right: Cell lysates from HEK293T cells transfected with RC210104 using transfection reagent MegaTran 2.0 (Cat# [TT210002]).



Coomassie blue staining of purified RETNLB protein (Cat# [TP310104]). The protein was produced from HEK293T cells transfected with RETNLB cDNA clone (Cat# RC210104) using MegaTran 2.0 (Cat# [TT210002]).