

Product datasheet for **RC210092**

NELF (NSMF) (NM_015537) Human Tagged ORF Clone

Product data:

Product Type:	Expression Plasmids
Product Name:	NELF (NSMF) (NM_015537) Human Tagged ORF Clone
Tag:	Myc-DDK
Symbol:	NELF
Synonyms:	HH9; NELF
Mammalian Cell Selection:	Neomycin
Vector:	pCMV6-Entry (PS100001)
E. coli Selection:	Kanamycin (25 ug/mL)



[View online »](#)

ORF Nucleotide Sequence:

>RC210092 ORF sequence
 Red=Cloning site Blue=ORF Green=Tags(s)

TTTTGTAATACGACTCACTATAGGGCGGCCGGAATTCGTCGACTGGATCCGGTACCGAGGAGATCTGCC
 GCC**GCGATCGCC**

ATGGGCGCCGCCCTCCAGGAGGAGGGCGCTGAGGAGCGAGGCCATGTCCTCGGTGGCGGCCAAAGTGC
 GAGCAGCCCGAGCGTTTGGAGAGTACCTGTCCAGAGTACCCTGAGAACCGCAACGGCGAGATCACT
 GCTGGCTGATGCCTACTCTGGCCACGACGGTCCCCCGAGATGCAGCCGGCCCCCAGAACAAGCGCCGC
 CTGTCCCTCGTCTCCAACGGCTGCTACGAGGGCAGCCTCTCAGAGGAGCCAGCATTAGGAAGCCCGCAG
 GCGAGGGCCCTCAGCCTCGAGTGTACACCATCTCTGGGGAGCCTGCCCTGCTGCCAGCCCTGAGGCGGA
 GGCCATTGAGCTGGCGGTGTTGAAGGGGCGCGGCAGCGGCACCCTCACCATCACAGCCAGCCCTGCGC
 GCCAGCCCTGGTGGCAGCCGGGAGGACGTGAGCAGGCCCTGCCAGAGCTGGGCGGCAGCCGCCAGGGCT
 CCAAGGAGTGCCCGGATGTGCCAGCTGGCTCCTGGCCCCACCCTCGGGCCTTTGGGTGGACCAGCC
 ACCTCTGCCTGAGACCTCCGGTCCCGCAAGAAGCTGGAGAGGATGTACAGCGTTGACCGTGTGTCTGAC
 GACATCCCTATTGCTACCTGGTTCCCAAGGAAAATCTTTTCAGCTTCCAGACAGCAACCACAACATATGC
 AAGCGGTGTTACGGGGCTACGCGGAGAGGAAGCGCCGAAACGGGAGAATGATCCCGCTGTGTAATCCA
 GAGGAACCTCCGCAAACCTGCGCATGGTCGGCAGCCGGAGGGTGAAGGCCAGACGTTTCGCTGAGCGG
 CGCGAGCGGAGCTTACGCCGGTCTGGAGCGACCCACCCCAATGAAAGCCGACACTTCCACGACTCCC
 GAGACAGCAGTGACCTGCAGAGCTCCACTGCACGCTGGACGAGGCCCTTCGAGGACTGGACTGGGACAC
 TGAGAAGGGCTGGAGGCTGTGGCTGCGACACCGAAGGCTTCGTGCCACCAAGGTCATGCTCATTTCC
 TCCAAGGTGCCAAGGCTGAGTACATCCCCTATCATCCGCCGGATGACCCCTCCATCATCCCCATCC
 TCTACGACCATGAGCACGCAACCTTCGAGGACATCCTTGAGGAGATAGAGAGGAAGCTGAACGCTACCA
 CAAGGGAGCCAAGATCTGGAAAATGCTGATTTTCTGCCAGGAGGCTCTGGACACCTCTATCTCTCAAG
 AACAAAGTGGCCACCTTTGCCAAAGTGGAGAAGGAAGAGGACATGATTCATTCTGGAAGCGGCTGAGCC
 GCCTGATGAGCAAAGTGAACCCAGAGCCGAACGTATCCACATCATGGGCTGCTACATTCTGGGAAACCC
 CAATGGAGAGAAGCTGTTCCAGAACCTCAGGACCCTCATGACTCCTTATAGGGTACCTTCGAGTACCC
 CTGGAGCTCTCAGCCCAAGGGAAGCAGATGATCGAGACGTAATTTGACTTCCGGTGTATCGCCTGTGGA
 AGAGCCGCCAGCACTCGAAGCTGCTGGACTTTGACGACGCTCTG

ACGCGTACGCGGCCGCTCGAGCAGAAACTCATCTCAGAAGAGGATCTGGCAGCAAATGATATCTGGATT
 ACAAGGATGACGACGATAAGGTTTAA

Protein Sequence:

>RC210092 protein sequence
 Red=Cloning site Green=Tags(s)

MGAAASRRRALRSEAMSSVAAKVRARAFGEYLSQSHPENRNGADHLLADAYSGHDGSPQMPPAPQNKRR
 LSLVSNCGYEGSLSEEPSIRKPAGEGPQPRVYITISGEPALLPSPEAEIELAVVKGRRQRHPHHHSQPLR
 ASPGGSREDVSRPCQSWAGSRQGSKECPGCAQLAPGPTPRAFGLDQPPLPETSGRKKLERMYSVDRVSD
 DIPIRTWFPKENLFSFQTATTTMQAVFRGYAERKRRKRENDASVIQRNFRKHLRMVGSRRVKAQTFAER
 RERSFSRSWSDPTPMKADTSHDSRDSSDLQSSHCTLDEAFEDLDWDEKLEAVACDTEGFVPPKVMLIS
 SKVPKAEYIPTIIRDDPSIIPILYDHEHATFEDILEEIERKLNHYHKGAKIWKMLIFCQGGPGHLYLLK
 NKVATFAKVEKEEDMIHFWRKLSRLMSKVNPEPNVIHIMGCYILGNPNGEKLFQNLRTLMTPIRVTFESP
 LELSAQKQMIETYFDRLRYLWKSQRHSLKLLDFDDVL

TRTRPLEQKLISEEDLAANDILDYKDDDDKV

Chromatograms:

https://cdn.origene.com/chromatograms/mk6586_a10.zip

Restriction Sites:

SgfI-MluI

Cloning Scheme:


ACCN: NM_015537

ORF Size: 1584 bp

OTI Disclaimer: The molecular sequence of this clone aligns with the gene accession number as a point of reference only. However, individual transcript sequences of the same gene can differ through naturally occurring variations (e.g. polymorphisms), each with its own valid existence. This clone is substantially in agreement with the reference, but a complete review of all prevailing variants is recommended prior to use. [More info](#)

OTI Annotation: This clone was engineered to express the complete ORF with an expression tag. Expression varies depending on the nature of the gene.

Components: The ORF clone is ion-exchange column purified and shipped in a 2D barcoded Matrix tube containing 10ug of transfection-ready, dried plasmid DNA (reconstitute with 100 ul of water).

- Reconstitution Method:**
1. Centrifuge at 5,000xg for 5min.
 2. Carefully open the tube and add 100ul of sterile water to dissolve the DNA.
 3. Close the tube and incubate for 10 minutes at room temperature.
 4. Briefly vortex the tube and then do a quick spin (less than 5000xg) to concentrate the liquid at the bottom.
 5. Store the suspended plasmid at -20°C. The DNA is stable for at least one year from date of shipping when stored at -20°C.

RefSeq: [NM_015537.4](#)

RefSeq Size: 3646 bp

RefSeq ORF: 1587 bp

Locus ID: 26012

UniProt ID: [Q6X4W1](#)

Cytogenetics: 9q34.3

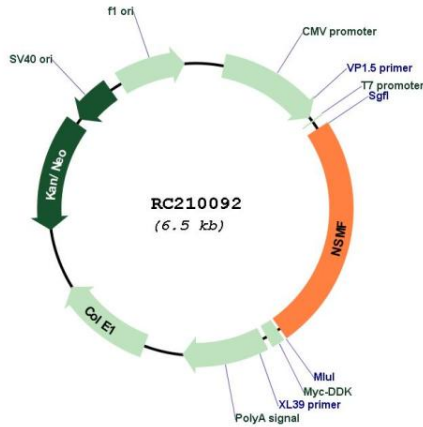
Domains: IQ

Protein Families: Druggable Genome

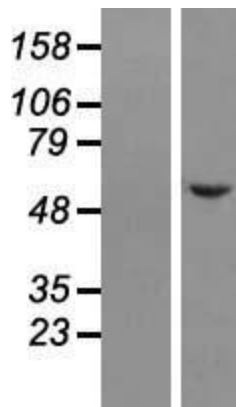
MW: 59.9 kDa

Gene Summary: The protein encoded by this gene is involved in guidance of olfactory axon projections and migration of luteinizing hormone-releasing hormone neurons. Defects in this gene are a cause of idiopathic hypogonadotropic hypogonadism (IHH). Several transcript variants encoding different isoforms have been found for this gene. [provided by RefSeq, May 2010]

Product images:



Circular map for RC210092



Western blot validation of overexpression lysate (Cat# [LY414485]) using anti-DDK antibody (Cat# [TA50011-100]). Left: Cell lysates from untransfected HEK293T cells; Right: Cell lysates from HEK293T cells transfected with RC210092 using transfection reagent MegaTran 2.0 (Cat# [TT210002]).