

## Product datasheet for **RC210091**

### **SERINC2 (NM\_178865) Human Tagged ORF Clone**

#### **Product data:**

Product Type:	Expression Plasmids
Product Name:	SERINC2 (NM_178865) Human Tagged ORF Clone
Tag:	Myc-DDK
Symbol:	SERINC2
Synonyms:	FKSG84; PRO0899; TDE2; TDE2L
Vector:	pCMV6-Entry (PS100001)
E. coli Selection:	Kanamycin (25 ug/mL)
Cell Selection:	Neomycin



[View online »](#)

**ORF Nucleotide Sequence:**

>RC210091 ORF sequence  
 Red=Cloning site Blue=ORF Green=Tags(s)

TTTTGTAATACGACTCACTATAGGGCGGCCGGGAATTCGTCGACTGGATCCGGTACCGAGGAGATCTGCC  
 GCC**CGCATCGCC**

ATGGGGGCTGCCTGGGAGCCTGCTCCCTGCTCAGCTGCGCGTCTGCCTCTGCGGCTCTGCCCCCTGCA  
 TCCTGTGCAGCTGCTGCCCGCCAGCCGCAACTCCACCGTGAGCCGCCTCATCTTCACGTTCTTCCTCTT  
 CCTGGGGGTGCTGGTGTCCATCATTATGCTGAGCCCGGGCGTGGAGAGTCACTCTACAAGCTGCCTGG  
 GTGTGTGAGGAGGGGGCCGGATCCCCACCGTCTGCAGGGCCACATCGACTGTGGCTCCCTGTTGGCT  
 ACCGCGTGTCTACCGCATGTGCTTCGCCACGGCGGCTTCTTCTTTTCCACCTGCTCATGCTCTG  
 CGTGAGCAGCAGCCGGACCCCGGGTCCATCCAGAATGGGTTTTGGTTCTTTAAGTCTGATCCTG  
 GTGGGCTCACCGTGGTGCCTTCTACATTCTGACGGCTCCTCACCAACATCTGGTCTACTTCGGCG  
 TCGTGGGCTCCTCCTTTCATCCTCATCCAGTGGTGTGCTCATCGACTTTGCGCACTCTGGAACCA  
 GCGGTGGCTGGCAAGGCCGAGGAGTGCATTCCCGTGCCTGGTACGCAGCCTCTTCTTCTCACTCTC  
 CTCTTCTACTTGCTGTCGATCGCGGCCGTGGCGCTGATGTTATGTACTACACTAGCCAGCGGCTGCC  
 ACGAGGGCAAGGTCTTATCAGCCTCAACCTCACCTTCTGTGTCTGCGTGTCCATCGCTGCTGCTGCC  
 CAAGGTCCAGGACGCCAGCCAACTCGGGTCTGCTGCAGGCCTCGGTATCACCTCTACACCATGTTT  
 GTCACCTGGTCAGCCCTATCCAGTATCCCTGAACAGAAATGCAACCCCAATTTGCCAACCCAGCTGGGA  
 ACGAGACAGTTGTGGCAGGCCCGAGGGCTATGAGACCCAGTGGTGGATGCCCGAGCATTGTGGGCT  
 CATCATCTTCTCCTGTGCACCTCTTATCAGTCTGCGCTCCTCAGACCACCGGAGGTGAACAGCCTG  
 ATGCAGACCGAGGAGTGGCCACCTATGCTAGACGCCACACAGCAGCAGCAGCAGGTTGGCAGCCTGTG  
 AGGGCCGGGCTTTGACAACGAGCAGGACGGCGTCACTACAGCTACTCCTTCTTCCACTTCTGCCTGGT  
 GCTGGCCTCACTGCACGTATGATGACGCTACCAACTGGTACAAGCCCGGTGAGACCCGGAAGATGATC  
 AGCACGTGGACCGCGTGTGGTGAAGATCTGTGCCAGTGGGCAGGGCTGCTCCTCTACCTGTGGACCC  
 TGGTAGCCCACTCCTCTGCGCAACCGCGACTTCAGC

**ACGCGT**ACGCGGCCGCTCGAGCAGAACTCATCTCAGAAGAGGATCTGGCAGCAAATGATATCCTGGATT  
 ACAAGGATGACGACGATAAGGTTTAA

**Protein Sequence:**

>RC210091 protein sequence  
 Red=Cloning site Green=Tags(s)

MGACLGACSLLSASCILCGSAPCILCSCCPASRNSTVSRLIFTFFLFLGVLVSIIMLSPGVESQLYKLPW  
 VCEEGAGIPTVLQGHIDCGSLLGYRAVYRMCFATAAFFFFFFLLMLCVSSSRDPRAAIQNGFWFFKFLIL  
 VGLTVGAFYIPDGSFTNIWFYFVGVGSFLFILIQLVLLIDFAHSWNQRWLGAEECDRAWYAGLFFFTL  
 LFYLLSIAAVALMFMYYTEPSGHEGKVFISLNLTFVCVVSIAAVLPKVQDAQPNSGLLQASVITLYTMF  
 VTWSALSSIQKCNPHLPTQLGNETVVAGPEGYETQWWDAPSIIVGLIIFLLCTLFISLRSSDHRQVNSL  
 MQTEECPPMLDATQQQQQVAACEGRAFDNEQDGVTSYSFFHFCLVLASLHVMMTLTNWYKPGETRKM  
 STWTAVVWKICASWAGLLLYLWTLVAPLLLRNRDFS

**TR**TRPLEQKLISEEDLAANDILDYKDDDDKV

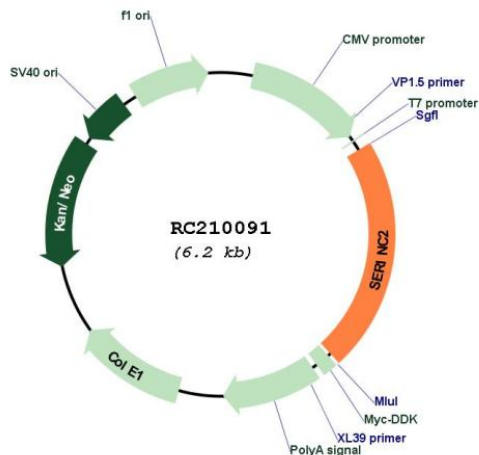
**Chromatograms:**

[https://cdn.origene.com/chromatograms/mk6767\\_a09.zip](https://cdn.origene.com/chromatograms/mk6767_a09.zip)

**Restriction Sites:**

Sgfl-Mlul

**Cloning Scheme:**

**Plasmid Map:**


**ACCN:** NM\_178865

**ORF Size:** 1368 bp

**OTI Disclaimer:** The molecular sequence of this clone aligns with the gene accession number as a point of reference only. However, individual transcript sequences of the same gene can differ through naturally occurring variations (e.g. polymorphisms), each with its own valid existence. This clone is substantially in agreement with the reference, but a complete review of all prevailing variants is recommended prior to use. [More info](#)

**OTI Annotation:** This clone was engineered to express the complete ORF with an expression tag. Expression varies depending on the nature of the gene.

**Components:** The ORF clone is ion-exchange column purified and shipped in a 2D barcoded Matrix tube containing 10ug of transfection-ready, dried plasmid DNA (reconstitute with 100 ul of water).

**Reconstitution Method:**

1. Centrifuge at 5,000xg for 5min.
2. Carefully open the tube and add 100ul of sterile water to dissolve the DNA.
3. Close the tube and incubate for 10 minutes at room temperature.
4. Briefly vortex the tube and then do a quick spin (less than 5000xg) to concentrate the liquid at the bottom.
5. Store the suspended plasmid at -20°C. The DNA is stable for at least one year from date of shipping when stored at -20°C.

**RefSeq:** [NM\\_178865.5](#)

**RefSeq Size:** 2060 bp

**RefSeq ORF:** 1368 bp

**Locus ID:** 347735

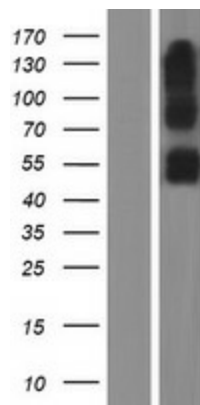
**UniProt ID:** [Q96SA4](#)

**Cytogenetics:** 1p35.2

**Protein Families:** Transmembrane

**MW:** 50.9 kDa

### Product images:



Western blot validation of overexpression lysate (Cat# [LY405829]) using anti-DDK antibody (Cat# [TA50011-100]). Left: Cell lysates from untransfected HEK293T cells; Right: Cell lysates from HEK293T cells transfected with RC210091 using transfection reagent MegaTran 2.0 (Cat# [TT210002]).