

## Product datasheet for RC210089

### WNT2 (NM\_003391) Human Tagged ORF Clone

#### Product data:

Product Type:	Expression Plasmids
Product Name:	WNT2 (NM_003391) Human Tagged ORF Clone
Tag:	Myc-DDK
Symbol:	WNT2
Synonyms:	INT1L1; IRP
Mammalian Cell Selection:	Neomycin
Vector:	pCMV6-Entry (PS100001)
E. coli Selection:	Kanamycin (25 ug/mL)
ORF Nucleotide Sequence:	>RC210089 ORF sequence Red=Cloning site Blue=ORF Green=Tags(s)

TTTTGTAATACGACTCACTATAGGGCGGCCGGAATTCGTCGACTGGATCCGGTACCGAGGAGATCTGCC  
GCC**CGGATCGCC**

ATGAACGCCCTCTCGGTGGAATCTGGCTCTGGCTCCCTCTGCTCTTGACCTGGCTACCCCCGAGGTCA  
ACTCTTCATGGTGGTACATGAGAGCTACAGGTGGCTCCTCCAGGGTGATGTGCGATAATGTGCCAGGCCCT  
GGTGAGCAGCCAGCGGCAGCTGTGTCACCGACATCCAGATGTGATGCGTGCCATTAGCCAGGGCGTGGCC  
GAGTGGACAGCAGAATGCCAGCACCAGTCCGCCAGCACCCTGGAATTGCAACACCCTGGACAGGGATC  
ACAGCCTTTTGGCAGGGTCTACTCCGAAGTAGTCGGGAATCTGCCTTTGTTTATGCCATCTCCTCAGC  
TGGAGTTGATTTGCCATCACCAGGGCCTGTAGCCAAGGAGAAGTAAAATCCTGTTCTGTGATCCAAAG  
AAGATGGGAAGCGCCAAGGACAGCAAAGGCATTTTGGATTGGGGTGGCTGCAAGTATAACATTGACTATG  
GGATCAAATTTGCCCGGCATTTGTGGATGCAAAGGAAAGGAAAGGAAAGGATGCCAGAGCCCTGATGAA  
TCTTCACAACAACAGAGCTGGCAGGAAGGCTGTAAGCGGTTCTTGAAACAAGAGTGCAAGTGCCACGGG  
GTGAGCGGCTCATGACTCTCAGGACATGCTGGCTGGCCATGGCCGACTTCAGGAAAACGGGCGATTATC  
TCTGGAGGAAGTACAATGGGGCCATCCAGGTGGTCAAGACAGGATGGCACAGGTTTACTGTGGCTAA  
CGAGAGGTTTAAGAAGCCAACGAAAAATGACCTCGTGTATTTGAGAATTCTCCAGACTACTGTATCAGG  
GACCGAGAGGCAGGCTCCCTGGGTACAGCAGGCCGTGTGTGCAACCTGACTTCCCGGGCATGGACAGCT  
GTGAAGTCATGTGCTGTGGGAGAGGCTACGACACCTCCCATGTCACCCGGATGACCAAGTGTGGGTGTA  
GTTCCACTGGTGTGCGCCGTGCGCTGTGAGGACTGCCTGGAAGCTCTGGATGTGCACACATGCAAGGCC  
CCCAAGAAGCTGACTGGACAACCGCTACA

**ACGCGT**ACGCGGCCGCTCGAGCAGAAACTCATCTCAGAAGAGGATCTGGCAGCAAATGATATCCTGGATT  
ACAAGGATGACGACGATAAGGTTTAA



[View online »](#)

**Protein Sequence:** >RC210089 protein sequence  
Red=Cloning site Green=Tags(s)

MNAPLGGIWLWLPLLLTWLTPEVNSSWWMYMRATGGSSRVMCDNVPGLVSSQRQLCHRHPDVMRAISQGVA  
 EWTAEQHQFRQHRWNCNTLDRDHSLFGRVLLRSSRESAFVYAISSAGVVFATRACSQGEVKSCSDPK  
 KMGSAKDSKGFIDWGGCSDNIDYGIKFAFAFVDAKERKGDARALMNLHNNRAGRKAVKRFKQECKCHG  
 VSGSCTLRTCWLAMADFRKTGDYLRWYNGAIQVVMNQDGTGFTVANERFKKPTKNDLVYFENSPDYCIR  
 DREAGSLGTAGRVCNLT SRGMDSCEVMCCGRGYDTSHVTRMTKCGCKFWCCA VRQCQDCL EALDVHTCKA  
 PKNADWTTAT

TRTRPLEQKLISEEDLAANDILDYKDDDDKV

**Chromatograms:** [https://cdn.origene.com/chromatograms/mk6147\\_g10.zip](https://cdn.origene.com/chromatograms/mk6147_g10.zip)

**Restriction Sites:** SgfI-MluI

**Cloning Scheme:**



\* The last codon before the Stop codon of the ORF

**ACCN:** NM\_003391

**ORF Size:** 1080 bp

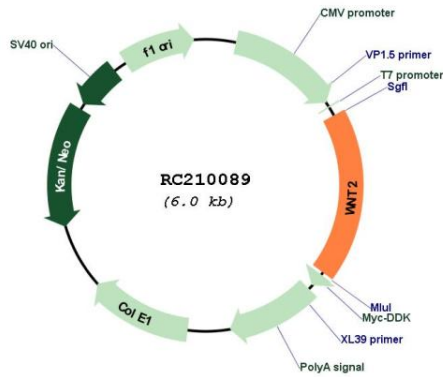
**OTI Disclaimer:** The molecular sequence of this clone aligns with the gene accession number as a point of reference only. However, individual transcript sequences of the same gene can differ through naturally occurring variations (e.g. polymorphisms), each with its own valid existence. This clone is substantially in agreement with the reference, but a complete review of all prevailing variants is recommended prior to use. [More info](#)

**OTI Annotation:** This clone was engineered to express the complete ORF with an expression tag. Expression varies depending on the nature of the gene.

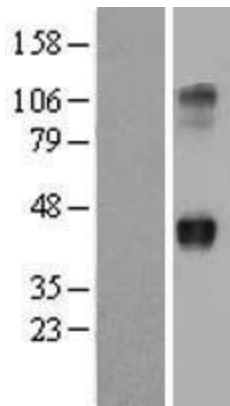
**Components:** The ORF clone is ion-exchange column purified and shipped in a 2D barcoded Matrix tube containing 10ug of transfection-ready, dried plasmid DNA (reconstitute with 100 ul of water).

<b>Reconstitution Method:</b>	<ol style="list-style-type: none"><li>1. Centrifuge at 5,000xg for 5min.</li><li>2. Carefully open the tube and add 100ul of sterile water to dissolve the DNA.</li><li>3. Close the tube and incubate for 10 minutes at room temperature.</li><li>4. Briefly vortex the tube and then do a quick spin (less than 5000xg) to concentrate the liquid at the bottom.</li><li>5. Store the suspended plasmid at -20°C. The DNA is stable for at least one year from date of shipping when stored at -20°C.</li></ol>
<b>Note:</b>	Plasmids are not sterile. For experiments where strict sterility is required, filtration with 0.22um filter is required.
<b>RefSeq:</b>	<a href="#">NM_003391.3</a>
<b>RefSeq Size:</b>	2907 bp
<b>RefSeq ORF:</b>	1083 bp
<b>Locus ID:</b>	7472
<b>UniProt ID:</b>	<a href="#">P09544</a>
<b>Cytogenetics:</b>	7q31.2
<b>Domains:</b>	wnt
<b>Protein Families:</b>	Adult stem cells, Cancer stem cells, ES Cell Differentiation/IPS, Secreted Protein, Stem cell relevant signaling - Wnt Signaling pathway
<b>Protein Pathways:</b>	Basal cell carcinoma, Hedgehog signaling pathway, Melanogenesis, Pathways in cancer, Wnt signaling pathway
<b>MW:</b>	40.4 kDa
<b>Gene Summary:</b>	This gene is a member of the WNT gene family. The WNT gene family consists of structurally related genes which encode secreted signaling proteins. These proteins have been implicated in oncogenesis and in several developmental processes, including regulation of cell fate and patterning during embryogenesis. Alternatively spliced transcript variants have been identified for this gene. [provided by RefSeq, Jul 2008]

Product images:



Circular map for RC210089



Western blot validation of overexpression lysate (Cat# [LY401154]) using anti-DDK antibody (Cat# [TA50011-100]). Left: Cell lysates from untransfected HEK293T cells; Right: Cell lysates from HEK293T cells transfected with RC210089 using transfection reagent MegaTran 2.0 (Cat# [TT210002]).