

Product datasheet for **RC210080**

RISC (SCPEP1) (NM_021626) Human Tagged ORF Clone

Product data:

Product Type:	Expression Plasmids
Product Name:	RISC (SCPEP1) (NM_021626) Human Tagged ORF Clone
Tag:	Myc-DDK
Symbol:	RISC
Synonyms:	HSCP1; RISC
Mammalian Cell Selection:	Neomycin
Vector:	pCMV6-Entry (PS100001)
E. coli Selection:	Kanamycin (25 ug/mL)



[View online »](#)

ORF Nucleotide Sequence:

>RC210080 ORF sequence
 Red=Cloning site Blue=ORF Green=Tags(s)

TTTTGTAATACGACTCACTATAGGGCGGCCGGAATTCGTCGACTGGATCCGGTACCGAGGAGATCTGCCGCCGCGATCGCC

ATGGAGCTGGCACTGCGGCGCTCTCCCGTCCCGCGGTGGTTGCTGCTGCTGCCGCTGCTGCTGGCCTGAACGCAGGAGCTGTCAATTGACTGGCCACAGAGGAGGGCAAGGAAGTATGGGATTATGTGACGGTCCGCAA
 GGATGCCTACATGTTCTGGTGGCTCTATTATGCCACCACTCCTGCAAGAATTCTCAGAAGTCCGCTG
 GTCATGTGGCTTCAGGGCGGTCCAGGCGGTTCTAGCACTGGATTTGAAAATTTGAGGAAATTTGGCCCC
 TTGACAGTGATCTCAAACCACGAAAACCACTGGCTCCAGGCTGCCAGTCTCTATTTGTGATAATCC
 CGTGGGCACTGGGTTCACTTATGTGAATGGTAGTGGTGCCTATGCCAAGGACCTGGCTATGGTGGCTTCA
 GACATGATGGTTCTCCTGAAGACCTTCTCAGTTGCCACAAGAATTCCAGACAGTTCATTCTACATTT
 TCTCAGAGTCTATGGAGAAAAATGGCAGCTGGCATTGGTCTAGAGCTTTATAAGGCCATTGAGCGAGG
 GACCATCAAGTCAACTTTGCGGGGTTGCTTGGGTGATTCTGGATCTCCCTGTTGATTCCGGTGCTC
 TCTGGGGACCTTACCTGTACAGCATGTCTTCTCGAAGACAAAGGTCTGGCAGAGGTGTCTAAGTTG
 CAGAGCAAGTACTGAATGCCGTAATAAGGGGCTCTACAGAGAGGCCACAGAGCTGTGGGGAAAGCAGA
 AATGATCATTGAACAGAACACAGATGGGGTGAACCTTCTATAACATCTTAATAAGCACTCCCACGTCT
 ACAATGGAGTCGAGTCTAGAATTCACACAGAGCCACCTAGTTTGTCTTTGTCAGCGCCACGTGAGACACC
 TACAACGAGATGCCTTAAGCCAGCTCATGAATGGCCCCATCAGAAAGAAGCTCAAATATTCTGAGGA
 TCAATCCTGGGGAGGCCAGGCTACCAACGTCTTTGTGAACATGGAGGAGGACTTCATGAAGCCAGTCATT
 AGCATTGTGGACGAGTTGCTGGAGGCAGGATCAACGTGACGGTGTATAATGGACAGCTGGATCTCATCG
 TAGATACCATGGGTGAGGAGCCCTGGGTGCGGAACTGAAGTGGCCAGAAGTGCCTAAATTCAGTCACT
 GAAGTGGAAAGGCCCTGTACAGTGACCCTAAATCTTTGAAAACATCTGCTTTTGTCAAGTCTACAAGAAC
 CTGCTTTCTACTGGATTCTGAAAGCTGGTTCATATGGTTCCTTCTGACCAAGGGGACATGGCTCTGAAGA
 TGATGAGACTGGTACTCAGCAAGAA

ACGCGTACGCGGCCGCTCGAGCAGAACTCATCTCAGAAGAGGATCTGGCAGCAAATGATATCCTGGATT
 ACAAGGATGACGACGATAAGGTTTAA

Protein Sequence:

>RC210080 protein sequence
 Red=Cloning site Green=Tags(s)

MELALRRSPVPRWLLLLPLLLGLNAGAVIDWPTEEGKEVWDYVTVRKDAYMFWLLYYATNSCKNFSELPL
 VMWLQGGPGSSSTGFNFEEIGPLDSDLKPRKTTWLQAASLLFVDNPVGTGF SYVNGSGAYAKDLAMVAS
 DMMVLLKTFFSCHKEFQTVPFYIFSESYGGKMAAGIGLELYKAIQRGTIKCNFAGVALGDSWISPVDSVL
 SWGPYLYSMSLLEDKGLAEVSKVAEQVLNAVNKGLYREATELWGKAEMIEQNTDGNVFNILTKSTPTS
 TMESSLEFTQSHLVCLCQRHVRHLQRDALSQLMNGPIRKLKIIPEDQSWGGQATNVFVNMEEDFMKPV
 SIVDELLEAGINVTYNGQLDLIVDTMGQEAWRKLLKWPPELPKFSQLKWKALYSDPKSLETSAFVKS
 YKNLAFYWILKAGHMVPSDQGMALKMMRLVTQQE

TRTRPLEQKLISEEDLAANDILDYKDDDDKV

Chromatograms:

https://cdn.origene.com/chromatograms/mk6366_c07.zip

Restriction Sites:

Sgfl-Mlul

Cloning Scheme:


ACCN: NM_021626

ORF Size: 1356 bp

OTI Disclaimer: The molecular sequence of this clone aligns with the gene accession number as a point of reference only. However, individual transcript sequences of the same gene can differ through naturally occurring variations (e.g. polymorphisms), each with its own valid existence. This clone is substantially in agreement with the reference, but a complete review of all prevailing variants is recommended prior to use. [More info](#)

OTI Annotation: This clone was engineered to express the complete ORF with an expression tag. Expression varies depending on the nature of the gene.

Components: The ORF clone is ion-exchange column purified and shipped in a 2D barcoded Matrix tube containing 10ug of transfection-ready, dried plasmid DNA (reconstitute with 100 ul of water).

- Reconstitution Method:**
1. Centrifuge at 5,000xg for 5min.
 2. Carefully open the tube and add 100ul of sterile water to dissolve the DNA.
 3. Close the tube and incubate for 10 minutes at room temperature.
 4. Briefly vortex the tube and then do a quick spin (less than 5000xg) to concentrate the liquid at the bottom.
 5. Store the suspended plasmid at -20°C. The DNA is stable for at least one year from date of shipping when stored at -20°C.

RefSeq: [NM_021626.3](#)

RefSeq Size: 1952 bp

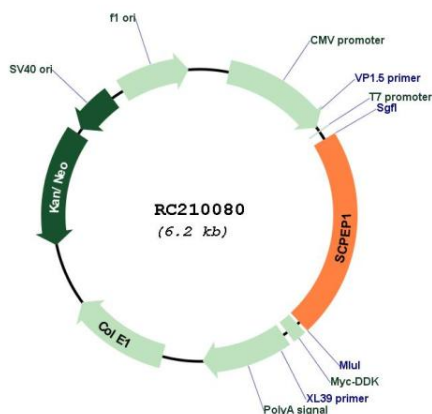
RefSeq ORF: 1359 bp

Locus ID: 59342

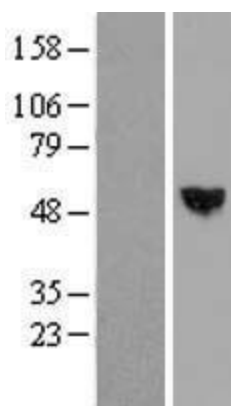
UniProt ID: [Q9HB40](#)

Cytogenetics: 17q22

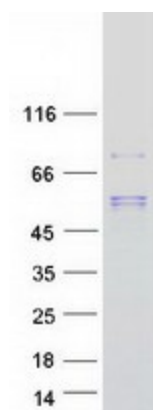
Domains: serine_carbpept
Protein Families: Druggable Genome, Protease, Secreted Protein
MW: 50.8 kDa
Gene Summary: May be involved in vascular wall and kidney homeostasis.[UniProtKB/Swiss-Prot Function]

Product images:


Circular map for RC210080



Western blot validation of overexpression lysate (Cat# [LY411960]) using anti-DDK antibody (Cat# [TA50011-100]). Left: Cell lysates from untransfected HEK293T cells; Right: Cell lysates from HEK293T cells transfected with RC210080 using transfection reagent MegaTran 2.0 (Cat# [TT210002]).



Coomassie blue staining of purified SCPEP1 protein (Cat# [TP310080]). The protein was produced from HEK293T cells transfected with SCPEP1 cDNA clone (Cat# RC210080) using MegaTran 2.0 (Cat# [TT210002]).