

## Product datasheet for RC210077

### MRM1 (NM\_024864) Human Tagged ORF Clone

#### Product data:

Product Type:	Expression Plasmids
Product Name:	MRM1 (NM_024864) Human Tagged ORF Clone
Tag:	Myc-DDK
Symbol:	MRM1
Mammalian Cell Selection:	Neomycin
Vector:	pCMV6-Entry (PS100001)
E. coli Selection:	Kanamycin (25 ug/mL)
ORF Nucleotide Sequence:	>RC210077 ORF sequence Red=Cloning site Blue=ORF Green=Tags(s)

TTTTGTAATACGACTCACTATAGGGCGGCCGGAATTCGTCGACTGGATCCGGTACCGAGGAGATCTGCC  
GCC**CGATCGCC**

ATGGCATTGCTCTCGACCGTCCGGGGCGGACCTGGGGTTCGCTCGTACCCGTCATTTCTCCCATGCAG  
CGCGGCATGGGGAGCGGCTGGTGGGGAGGAGCTAAGCCGCTTGTGCTGGATGACCTGGTGCCGACCTC  
TCGGCTGGAGCTTCTGTTGGCATGACCCCGTGTCTCTGGCTCTGCAGGCCGCCCGCCTCTGTGGCC  
CGGCTCCTGCTCCAGGCGGGTAAAGCTGGGCTGCAGGGGAAGCGGGCCGAGCTGCTCCGGATGGCCGAGG  
CGCGGGACATTCAGTTCTGCGGCCAGACGGCAGAACTGGACACAATGTCCGCTACCCAGGTCACCA  
GGGTGTCTGCATGGAGGTGAGCCCGCTGCGGCCCGGCCCTTGGAGAGAGGCCGGGAGGCCGAGCCAGGC  
GACGACCCAGCAGTTGTGGCTCGTCTCGATGGGATCCAGGATCCCGGAATTTGGGCTGTGCTGC  
GTTCCGCACACTTCTCGGAGTGGATAAGGTATCACCAGCCGAGAAACAGCTGCCCGCTCACTCCAGT  
AGTCAGCAAGTCCAGCGCGGGGCTATGGAGGTGATGGACGTGTTCTCCACTGATGACCTACCCGATTT  
TTACAGACCAAAGCCAGCAGGGCTGGCTCGTGGCCGGCACGGTGGGCTGCCAAGCACAGAGGATCCCC  
AGTCTCCGAGATCCCCATCATGAGTTGCTTGGAGTTCTCTGGGAACGGCTACTCTCTTGTGCTGGG  
GAATGAGGGCTCAGTCTATCCAGGAGGTGCAGGCTCTGCCAGCTTCTCTCACCATCTGCCCGG  
CGCCAGCTGCCTCTGGACTTGAGTCTTGAACGTCTCTGTGGCTGCAGGAATTTCTTCACTCCATTT  
GCAGCCAGAGGAAGGTTTCCCCACAGAGGGGGAGAGAAGGCAGCTTCTCCAAGACCCCAAGAACCCTC  
AGCCAGGTCTGAAGGGCTCAGCATGGCTCAGCACCCAGGGCTGTCTTCCAGGCCAGAGAAAGAGAGGCCAA  
AATGAGGGC

**ACGCGT**ACGCGGCCGCTCGAGCAGAACTCATCTCAGAAGAGGATCTGGCAGCAAATGATATCCTGGATT  
ACAAGGATGACGACGATAAGGTTTAA



[View online »](#)

**Protein Sequence:** >RC210077 protein sequence  
Red=Cloning site Green=Tags(s)

MALLSTVRGATWGRLVTRHFSHAARHGERPGGEELSRLLDDLVPTSRLLELLFGMTPCLLALQAARRSVA  
 RLLLQAGKAGLQKRAELLRMAEARDIPVLRPRRQKLDTCRYQVHQVCMEVSPLRPRPWREAGEASPG  
 DDPQQLWLVLDGIQDPRNFGAVLRS AHFLGVDK VITSRNSCPLTPVVS KSSAGAMEVMDV FSTDDL TGF  
 LQTKAQQGWL VAGTVGCPSTEDPQSSEIPIMSCLEFLWERPTLLVLGNEGSGLSQEVQASCQLLLTILPR  
 RQLPPGLESLNVSVAAGILLHSICSRKGFPTGERRQLLQDPQEPSARSEGLSMAQHPGLSSGPEKERQ  
 NEG

TRTRPLEQKLISEEDLAANDILDYKDDDDKV

**Chromatograms:** [https://cdn.origene.com/chromatograms/mk6366\\_a09.zip](https://cdn.origene.com/chromatograms/mk6366_a09.zip)

**Restriction Sites:** Sgfl-MluI

**Cloning Scheme:**

Cloning sites used for ORF Shuttling:



\* The last codon before the Stop codon of the ORF

**ACCN:** NM\_024864

**ORF Size:** 1059 bp

**OTI Disclaimer:** The molecular sequence of this clone aligns with the gene accession number as a point of reference only. However, individual transcript sequences of the same gene can differ through naturally occurring variations (e.g. polymorphisms), each with its own valid existence. This clone is substantially in agreement with the reference, but a complete review of all prevailing variants is recommended prior to use. [More info](#)

**OTI Annotation:** This clone was engineered to express the complete ORF with an expression tag. Expression varies depending on the nature of the gene.

**Components:** The ORF clone is ion-exchange column purified and shipped in a 2D barcoded Matrix tube containing 10ug of transfection-ready, dried plasmid DNA (reconstitute with 100 ul of water).

**Reconstitution Method:**

1. Centrifuge at 5,000xg for 5min.
2. Carefully open the tube and add 100ul of sterile water to dissolve the DNA.
3. Close the tube and incubate for 10 minutes at room temperature.
4. Briefly vortex the tube and then do a quick spin (less than 5000xg) to concentrate the liquid at the bottom.
5. Store the suspended plasmid at -20°C. The DNA is stable for at least one year from date of shipping when stored at -20°C.

**RefSeq:** [NM\\_024864.5](#)

**RefSeq Size:** 1851 bp

**RefSeq ORF:** 1062 bp

**Locus ID:** 79922

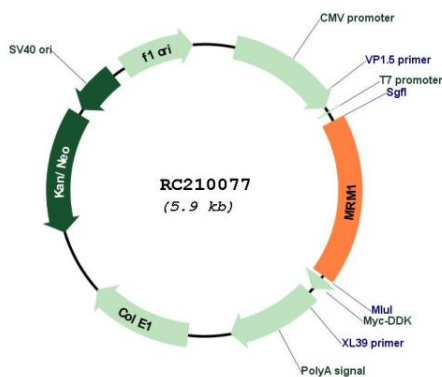
**UniProt ID:** [Q6IN84](#)

**Cytogenetics:** 17q12

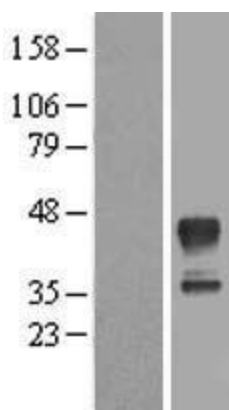
**MW:** 38.6 kDa

**Gene Summary:** S-adenosyl-L-methionine-dependent 2'-O-ribose methyltransferase that catalyzes the formation of 2'-O-methylguanosine at position 1145 (Gm1145) in the 16S mitochondrial large subunit ribosomal RNA (mtLSU rRNA), a universally conserved modification in the peptidyl transferase domain of the mtLSU rRNA.[UniProtKB/Swiss-Prot Function]

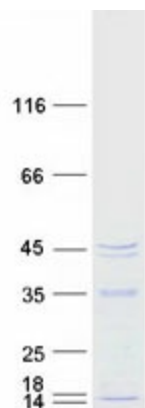
### Product images:



Circular map for RC210077



Western blot validation of overexpression lysate (Cat# [LY411029]) using anti-DDK antibody (Cat# [TA50011-100]). Left: Cell lysates from untransfected HEK293T cells; Right: Cell lysates from HEK293T cells transfected with RC210077 using transfection reagent MegaTran 2.0 (Cat# [TT210002]).



Coomassie blue staining of purified MRM1 protein (Cat# [TP310077]). The protein was produced from HEK293T cells transfected with MRM1 cDNA clone (Cat# RC210077) using MegaTran 2.0 (Cat# [TT210002]).