

Product datasheet for **RC210076**

GRASP65 (GORASP1) (NM_031899) Human Tagged ORF Clone

Product data:

Product Type:	Expression Plasmids
Product Name:	GRASP65 (GORASP1) (NM_031899) Human Tagged ORF Clone
Tag:	Myc-DDK
Symbol:	GRASP65
Synonyms:	GOLPH5; GRASP65; P65
Mammalian Cell Selection:	Neomycin
Vector:	pCMV6-Entry (PS100001)
E. coli Selection:	Kanamycin (25 ug/mL)



[View online »](#)

ORF Nucleotide
Sequence:

>RC210076 ORF sequence
Red=Cloning site Blue=ORF Green=Tags(s)

TTTTGTAATACGACTCACTATAGGGCGGCCGGGAATTCGTCGACTGGATCCGGTACCGAGGAGATCTGCC
GCCGCGATCGCC

ATGGGCCTGGGCGTCAGCGCTGAGCAGCCCGAGCGGCCGAGGGCTCCACCTCCACGGGGTGCAGG
AGAACTCCCCAGCCAGCAGGCGGGCTGGAGCCCTACTTTGACTTCATCATCACCATTGGGCACTCGAG
GCTGAACAAGGAGAATGACACCCCTGAAGGCACTACTGAAAGCCAATGTGGAGAAGCCCGTGAAGCTGGAG
GTGTTCAATATGAAGACCATGAGGGTGCAGGAGGTGGAGGTGGTCCAGCAACATGTGGGGCGGCCAGG
GCCTACTGGGTGCCAGTGTGCGCTTCTGCAGCTCCGAGGGCCAGTGCAGGAGTGTGGCATGTGCTGGA
TGTGGAACCATCTTCACCTGCTGCCCTTCCGCGCCTGCGCCCTACACAGACTATGTGGTTGGTTCGGAC
CAGATTCTCCAGGAGTCCGAGGACTTCTTACGCTCATCGAGTCTCATGAGGGGAAGCCCTGAAGCTGA
TGGTGATAACTCCAAGTCAGACTCCTGCCGGGAGGTGACTGTAACCTCCAACGCAGCCTGGGGTGGAGA
GGGAGTCTGGGATGTGGCATTGGCTATGGGTATCTACACGGATCCCAACTCAGCCCCCAGCTACCAC
AAGAAGCCACCTGGCACCACCCACCTTCTGCTCTACCCTTGGTGGCCACACCTGATGCTCTACCAC
CTGGACCCACCCCGAGGACTCTCTTCCCTGGAGACAGGTTCCAGGCAGAGTACTACATGGAGGCCCT
GCTGCAGGCACCTGGCTCCTCCATGGAGGATCCCTTCTGGGCTGGGAGTCCCAGCCACAGTGTCCA
GACCCTGATGGACTTCCCATTTCATGGAGACTCCTTTCAGCCCCACCTCCAGTGCAGCGAGTTATGG
ACCCAGGCTTCTGGACGTGTGCGGAATTTCTCTTGGACAACAGCAATGCCAGTGTGTGGCCAGCCT
GCCCTCTCCACAGAAGTACCACACAGCTGTCTCAACCTCAGGGCCAGAGGACATCTGCTCCAGCAGC
AGTTCTCATGAGCGGGTGGTGAAGGCTACATGGTCTGGGTGAGAGTTGAGGTCTCTTCTGGACAGCC
CAGGTGCCCAAGCCAGGCGGACCACCTGCCTCAGCTGACTTCTCTGACAGTCTCACCTCTGCAGCCTC
ACCAGAAGATGGGCTGTCCGCCGAGCTGCTTGAAGCTCAGGCTGAGGAGGAACCAGCAAGCACAGAGGGC
CTAGATACTGGGACGGAGGCTGAGGGGCTGGACAGCCAGGCCAGATCTCTACCACAGAA

ACGCGTACGCGGCCGCTCGAGCAGAACTCATCTCAGAAGAGGATCTGGCAGCAATGATATCCTGGATT
ACAAGGATGACGACGATAAGGTTTAA

Protein Sequence:

>RC210076 protein sequence
Red=Cloning site Green=Tags(s)

MGLGVSAEQPAGGAEGFHLHGVQENSPAQQAGLEPYDFDIITIGH SRLNKENDTLKALLKANVEKPKVLE
VFNMKTMRVREVEVVP SNMWGGQLLGASVRFCSFRASEQVWHVLDVEPSSPAALAGLRPYTDYVVGSD
QILQESEDFFTLIESHEGKPLKLMVYNSKSDSCREVTVPNAAWGGEGLGCGIGYGLHRIPTQPPSYH
KKPPGTPPPSALPLGAPPPDALPPGTPEDSPSLETGSRQSDYMEALLQAPGSSMEDPLPGPGSPSHSAP
DPDGLPHFMETPLQPPPVQRVMDPGFLDVSGISLLDNSNASVWPSLPSSTELTTTAVSTSGPEDICSSS
SSHERGGEATWSGSEFEVSFLDSPGAQAQADHLPQLTLPDSL TSAASPEDGLSAELLEAQAE EEPASTEG
LDTGTEAEGLDSQAQISTTE

TRTRPLEQKLISEEDLAANDILDYKDDDDKV

Chromatograms:

https://cdn.origene.com/chromatograms/mk6147_g02.zip

Restriction Sites:

SgfI-MluI

Cloning Scheme:


ACCN: NM_031899

ORF Size: 1320 bp

OTI Disclaimer: The molecular sequence of this clone aligns with the gene accession number as a point of reference only. However, individual transcript sequences of the same gene can differ through naturally occurring variations (e.g. polymorphisms), each with its own valid existence. This clone is substantially in agreement with the reference, but a complete review of all prevailing variants is recommended prior to use. [More info](#)

OTI Annotation: This clone was engineered to express the complete ORF with an expression tag. Expression varies depending on the nature of the gene.

Components: The ORF clone is ion-exchange column purified and shipped in a 2D barcoded Matrix tube containing 10ug of transfection-ready, dried plasmid DNA (reconstitute with 100 ul of water).

Reconstitution Method:

1. Centrifuge at 5,000xg for 5min.
2. Carefully open the tube and add 100ul of sterile water to dissolve the DNA.
3. Close the tube and incubate for 10 minutes at room temperature.
4. Briefly vortex the tube and then do a quick spin (less than 5000xg) to concentrate the liquid at the bottom.
5. Store the suspended plasmid at -20°C. The DNA is stable for at least one year from date of shipping when stored at -20°C.

RefSeq: [NM_031899.3](#)

RefSeq Size: 3789 bp

RefSeq ORF: 1323 bp

Locus ID: 64689

UniProt ID: [Q9BQQ3](#)

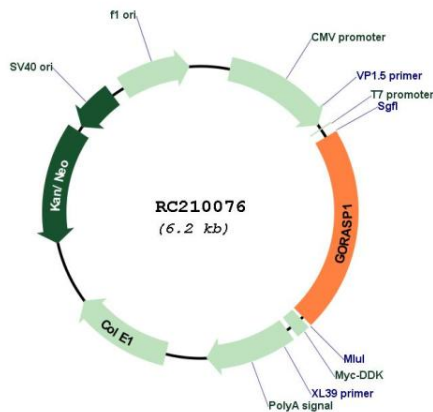
Cytogenetics: 3p22.2

Domains: GRASP55_65

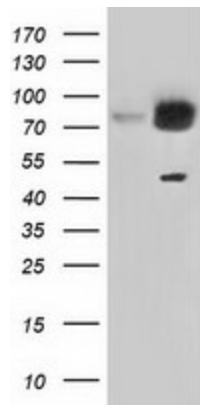
MW: 46.5 kDa

Gene Summary: The Golgi complex plays a key role in the sorting and modification of proteins exported from the endoplasmic reticulum. The protein encoded by this gene is a membrane protein involved in establishing the stacked structure of the Golgi apparatus. It is a caspase-3 substrate, and cleavage of this encoded protein contributes to Golgi fragmentation in apoptosis. This encoded protein can form a complex with the Golgi matrix protein GOLGA2, and this complex binds to the vesicle docking protein p115. Alternative splicing results in multiple transcript variants of this gene. [provided by RefSeq, Jul 2013]

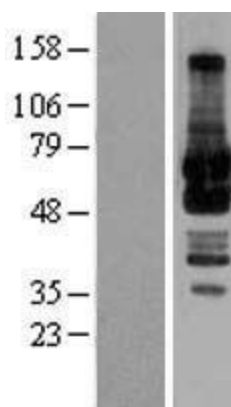
Product images:



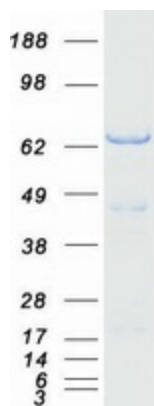
Circular map for RC210076



HEK293T cells were transfected with the pCMV6-ENTRY control (Cat# [PS100001], Left lane) or pCMV6-ENTRY GORASP1 (Cat# RC210076, Right lane) cDNA for 48 hrs and lysed. Equivalent amounts of cell lysates (5 ug per lane) were separated by SDS-PAGE and immunoblotted with anti-GORASP1(Cat# [TA501309]). Positive lysates [LY403127] (100ug) and [LC403127] (20ug) can be purchased separately from OriGene.



Western blot validation of overexpression lysate (Cat# [LY403127]) using anti-DDK antibody (Cat# [TA50011-100]). Left: Cell lysates from untransfected HEK293T cells; Right: Cell lysates from HEK293T cells transfected with RC210076 using transfection reagent MegaTran 2.0 (Cat# [TT210002]).



Coomassie blue staining of purified GORASP1 protein (Cat# [TP310076]). The protein was produced from HEK293T cells transfected with GORASP1 cDNA clone (Cat# RC210076) using MegaTran 2.0 (Cat# [TT210002]).