

## Product datasheet for **RC210074**

### **FBXL3 (NM\_012158) Human Tagged ORF Clone**

#### **Product data:**

Product Type:	Expression Plasmids
Product Name:	FBXL3 (NM_012158) Human Tagged ORF Clone
Tag:	Myc-DDK
Symbol:	FBXL3
Synonyms:	FBL3; FBL3A; FBXL3A; IDDSFAS
Mammalian Cell Selection:	Neomycin
Vector:	pCMV6-Entry (PS100001)
E. coli Selection:	Kanamycin (25 ug/mL)



[View online »](#)

**ORF Nucleotide Sequence:**

>RC210074 ORF sequence  
 Red=Cloning site Blue=ORF Green=Tags(s)

TTTTGTAATACGACTCACTATAGGGCGGCCGGGAATTCGTCGACTGGATCCGGTACCGAGGAGATCTGCC  
 GCC**CGGATCGCC**

ATGAAACGAGGAGGAAGAGATAGTGACCGTAATTCATCAGAAGAAGGAAGTGCAGAGAAATCCAAGAAAC  
 TGAGGACTACAAATGAGCATTCTCAGACTTGTGATTGGGGTAATCTCCTTCAGGACATTATTCTCCAAGT  
 ATTTAAATATTTGCCTCTTCTTGACCGGCTCATGCTTCACAAGTTTGCCGCAACTGGAACCAGGTATTT  
 CACATGCCTGACTTGTGGAGATGTTTTGAATTTGAACTGAATCAGCCAGCTACATCTTATTTGAAAGCTA  
 CCCATCCAGAGCTGATCAAACAGATTATTTAAAGACATTCAAACCATCTACAATATGTCAGCTTCAAGGT  
 GGACAGCAGCAAGGAATCAGCTGAAGCAGCTTGTGATATACTATCGCAACTTGTGAATTGCTCTTTAAAA  
 ACACTTGGACTTATTTCAACTGCTCGACCAAGCTTTATGGATTTACCAAAGTCTCACTTTATCTCTGCAC  
 TGACAGTTGTGTTGTAACCTCAAATCCCTGTCTTCGTTAAGATAGATGATACTCCAGTAGATGATCC  
 ATCTCTCAAAGTACTAGTGGCCAACAATAGTGATACACTCAAGCTTTGAAAATGAGCAGCTGTCCTCAT  
 GTCTCTCCAGCAGGTATCCTTTGTGTGGCTGATCAGTGTACGGCTTAAGAGAAGTAGCCCTGAACTACC  
 ACTTATTGAGTGATGAGTTGTTACTTGCATTGTCTTCTGAAAAACATGTTTCGATTAGAACATTTGCGCAT  
 TGATGTAGTCAGTGAGAACTCTGGACAGACACACTTCCATACTATTGAGAAGAGTAGCTGGGATGCTTTC  
 ATCAGACATTCACCCAAAGTGAACCTTAGTGATGATTTTTTTTTTATGGAAGAAGATTTGACCCCTTCT  
 TTCGCTATGAAATACCTGCCACCCATCTGACTTTGGGAGATCAGTAAGCAAAGATGTGCTTGGCCGTGT  
 GGGAAATGACATGCCCTAGACTGGTTGAACTAGTAGTGTGTGCAATGGATTACGGCCACTTGATGAAGAG  
 TTAATTCGATTGCAGAACGTTGCAAAAATTTGCAGCTATTGGACTAGGGGAATGTGAAGTCTCATGTA  
 GTGCCTTTGTTGAGTTTGTGAAGATGTGTGGTGGCCGCTATCTCAATTATCCATTATGGAAGAAGTACT  
 AATTCCTGACCAAAGTATAGTTTGGAGCAGATTAAGTGGGAAGTGTCCAAGCATCTTGGTAGGGTGTGG  
 TTTCCCGACATGATGCCCACTTGG

**ACGCGT**ACGCGGCCGCTCGAGCAGAAACTCATCTCAGAAGAGGATCTGGCAGCAAATGATATCCTGGATT  
 ACAAGGATGACGACGATAAGGTTTAA

**Protein Sequence:**

>RC210074 protein sequence  
 Red=Cloning site Green=Tags(s)

MKRGGRSDRNSSEEGTAEKSKKLRTTNEHSQTCDWGNLLQDIILQVFKYLPLLDRAHASQVCRNWNQVF  
 HMPDLWRCFEFELNQPATSYLKATHPELIKQIIKRHSNHLQYVSKVDSSKESAEAAACDILSQLVNC SLK  
 TLGLI STARPSFMDLPKSHFISALTVVFNKSLSSLKIDDPVDDPSLKVLVANNSDTLKLKMS SCPH  
 VSPAGILCVADQCHGLRELALNYHLLSDELLLALSSEKHVRLHLRIDVVS ENPGQTHFHTIQKSSWDAF  
 IRHSPKVNLMYFFLYEEFDPFFRYEIPATHLYFGRSVSKDVLGRVGMTCPRLVELVVCANGLRPLDEE  
 LIRIAERCKNLSAIGLGECEVSCSAFVEFVKMCGGRLSQLSIMEEVLIPDQKYSLEQIHWEVSKHLGRVW  
 FPDMMPTW

**TR**TRPLEQKLISEEDLAANDILDYKDDDDKV

**Chromatograms:**

[https://cdn.origene.com/chromatograms/mk6005\\_f06.zip](https://cdn.origene.com/chromatograms/mk6005_f06.zip)

**Restriction Sites:**

Sgfl-Mlul



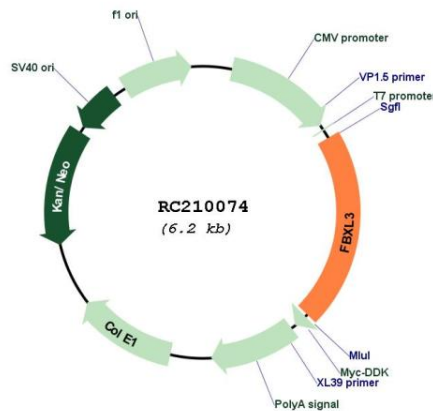
**Domains:** F-box

**Protein Families:** Druggable Genome

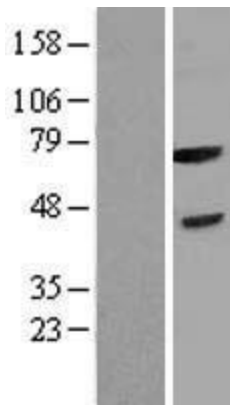
**MW:** 48.7 kDa

**Gene Summary:** This gene encodes a member of the F-box protein family which is characterized by an approximately 40 amino acid motif, the F-box. The F-box proteins constitute one of the four subunits of ubiquitin protein ligase complex called SCFs (SKP1-cullin-F-box), which function in phosphorylation-dependent ubiquitination. The F-box proteins are divided into 3 classes: Fbws containing WD-40 domains, Fbls containing leucine-rich repeats, and Fbxs containing either different protein-protein interaction modules or no recognizable motifs. The protein encoded by this gene belongs to the Fbls class and, in addition to an F-box, contains several tandem leucine-rich repeats and is localized in the nucleus. [provided by RefSeq, Jul 2008]

**Product images:**



Circular map for RC210074



Western blot validation of overexpression lysate (Cat# [LY402155]) using anti-DDK antibody (Cat# [TA50011-100]). Left: Cell lysates from untransfected HEK293T cells; Right: Cell lysates from HEK293T cells transfected with RC210074 using transfection reagent MegaTran 2.0 (Cat# [TT210002]).