

Product datasheet for **RC210068**

SENP3 (NM_015670) Human Tagged ORF Clone

Product data:

Product Type:	Expression Plasmids
Product Name:	SENP3 (NM_015670) Human Tagged ORF Clone
Tag:	Myc-DDK
Symbol:	SENP3
Synonyms:	SMT3IP1; SSP3; Ulp1
Mammalian Cell Selection:	Neomycin
Vector:	pCMV6-Entry (PS100001)
E. coli Selection:	Kanamycin (25 ug/mL)



[View online »](#)

ORF Nucleotide Sequence:

>RC210068 ORF sequence
 Red=Cloning site Blue=ORF Green=Tags(s)

TTTTGTAATACGACTCACTATAGGGCGGCCGGAATTCGTCGACTGGATCCGGTACCGAGGAGATCTGCC
 GCC**CGCATCGCC**

ATGAAAGAGACTATACAAGGACCGGGTCTGGGGCCTGAGCCTCTGGACCCGCATACCCCCAGCTT
 ACTCAAGTCCCAGGCGGGAGCGTCTTCGTTGGCCCCACCTCCCAAACCCGACTCAAGTCAGGTGGAGG
 GTTTGGGCCAGATCCTGGGTCAGGGACCACAGTCCAGCCAGACGCCCTCCTGTCCCCGACCTCTTTT
 GATGCCTCAGCAAGTGAAGAGGAGGAAGAAGAGGAGGAGGAGGATGAAGATGAAGAGGAGGAAGTGG
 CAGCTTGGAGGCTGCCCCAAGATGGAGTCAGCTGGGAACCTCCAGCGGCCCGCCCTCCCGCCCCAC
 TCATCGAAAAACCTGCTCACAGCGCCGCCGCCGAGCCATGAGAGCCTTCCGGATGCTGCTACTCAAAA
 AGCACCTCGTGACATTCACCTGGAAGCTTTGGGGGCCACCGGGGCCGGCGGGGGCCTCGCACACC
 CCAAGAACCATCTTTCACCCAGCAAGGGGTGCGACGCCACAGGTGCCATCCCCCTGTTGTCGTTTTGA
 CTCCCCCGGGGCCACCTCCACCCGGCTGGGTCTGCTAGGTGCTCTCATGGCTGAGGATGGGGTGA
 GGGTCTCCACCAGTGCCTCTGGGCCCCCATGGAGGAAGATGGACTCAGGTGGACTCCAAAGTCTCCTC
 TGGACCTGACTCGGGCCTCCTTTCATGTACTCTGCCAACGGTTTTGGGGGACAATCTGGGCCAGAAGG
 GGAGCGCAGCTTGGCACCCCTGATGCCAGCATCCTCATCAGCAATGTGTGCAGCATCGGGGACCATGTG
 GCCCAGGAGCTTTTTCAGGGCTCAGATTTGGGCATGGCAGAAGAGGCAGAGAGGCTGGGGAGAAAGCCG
 GCCAGCACAGCCCCCTGCGAGAGGAGCATGTGACCTGCGTACAGAGTATCTTGGACGAATTCCTTCAAAC
 GTATGGCAGCCTCATACCCCTCAGCACTGATGAGGTAGTAGAGAAGCTGGAGGACATTTCCAGCAGGAG
 TTTTCCACCCCTCCAGGAAGGGCCTGGTGTGCAGCTGATCCAGTCTTACCAGCGGATGCCAGGCAATG
 CCATGGTGAGGGCTTCCGAGTGGCTTAAAGCGGCACGTGCTGACCATGGATGACTTGGGGACCTGTGA
 TGGACAGAACTGGCTCAATGACCAGGTGATGAACATGTATGGAGACCTGGTCATGGACACAGTCCCTGAA
 AAGGTGCATTTCTCAATAGTTTCTTCTATGATAAACTCCGTACCAAGGTTATGATGGGGTAAAAGGT
 GGACAAAAACGTGGACATCTTCAATAAGGAGCTACTGCTAATCCCCATCCACCTGGAGGTGCATTGGTC
 CCTCATCTCTGTTGATGTGAGGCGACGCACCATCACCTATTTTACTCGCAGCGTACCCTAAACCGCCG
 TGCCCTAAGCATATTGCCAAGTATCTACAGGCAGAGGCGGTAAGAAAGACCGACTGGATTTCCACCAGG
 GCTGAAAAGTTACTTCAAATGAATGTGGCCAGGAGAATAATGACAGTACTGTGGTCTTTTGTGTT
 GCAGTACTGCAAGCATCTGGCCCTGTCTCAGCCATTCAGCTTACCCAGCAGGACATGCCAAACTTCGT
 CGGCAGATCTACAAGGAGCTGTGCTCACTGCAAACCTCACTGTG

ACGCGTACGCGGGCCGCTCGAGCAGAAACTCATCTCAGAAGAGGATCTGGCAGCAAATGATATCCTGGATT
 ACAAGGATGACGACGATAAGGTTTAA

Protein Sequence:

>RC210068 protein sequence
 Red=Cloning site Green=Tags(s)

MKETIQGTGSWGPPEPPGPIPPAYSSPRRERLRWPPPKPRLKSGGGFGPDGSGTTPARRLPVPRPSF
 DASASEEEEEEEEEDEDEEEVAAWRLPPRWSQLGTSQRPRPSRPTHKTCQRRRRAMRAFRMLLYSK
 STSLTFHWKLWGRHRGRRRGLAHPKNHLSPPQGGATPQVSPCCRFDSRGP PPPRLGLL GALMAEDGVR
 GSPPVPSGPPMEEDGLRWTPKSPDPDGLLSCTLPNGFQQSGPEGERSLAPPDASILISNVCSIGDHV
 AQELFQGSDLGMAEEAERPGEKAGQHSPLREEHVTCVQSILDEFLQTYGSLIPLSTDEVVEKLEDFQQE
 FSTPSRKGLVLQLIQSYQRMPGNAMVRGFRVAYKRHVL TMDDLGTLYGQNWLNQVMNMYGDLVMDTVPE
 KVHFFNSFFYDKLRKTGYDGVKRWTKNVDIFNKELLLIPIHLEVHWSLISVDVRRRTITYFDSQRTLNR
 CPKHIAKYLQAEAVKKDRLDFHQGWKGYFKMNVARQNNSDCGAFVLQYCKHLALSQPF SFTQQDMPKLR
 RQIYKELCHCKLTV

TRTRPLEQKLISEEDLAANDILDYKDDDDKV

Chromatograms:

https://cdn.origene.com/chromatograms/mk6133_e10.zip

Restriction Sites:

Sgfl-Mlul

Cloning Scheme:


ACCN: NM_015670

ORF Size: 1722 bp

OTI Disclaimer: The molecular sequence of this clone aligns with the gene accession number as a point of reference only. However, individual transcript sequences of the same gene can differ through naturally occurring variations (e.g. polymorphisms), each with its own valid existence. This clone is substantially in agreement with the reference, but a complete review of all prevailing variants is recommended prior to use. [More info](#)

OTI Annotation: This clone was engineered to express the complete ORF with an expression tag. Expression varies depending on the nature of the gene.

Components: The ORF clone is ion-exchange column purified and shipped in a 2D barcoded Matrix tube containing 10ug of transfection-ready, dried plasmid DNA (reconstitute with 100 ul of water).

- Reconstitution Method:**
1. Centrifuge at 5,000xg for 5min.
 2. Carefully open the tube and add 100ul of sterile water to dissolve the DNA.
 3. Close the tube and incubate for 10 minutes at room temperature.
 4. Briefly vortex the tube and then do a quick spin (less than 5000xg) to concentrate the liquid at the bottom.
 5. Store the suspended plasmid at -20°C. The DNA is stable for at least one year from date of shipping when stored at -20°C.

RefSeq: [NM_015670.3](#), [NP_056485.2](#)

RefSeq Size: 2509 bp

RefSeq ORF: 1725 bp

Locus ID: 26168

UniProt ID: [Q9H4L4](#)

Cytogenetics: 17p13.1

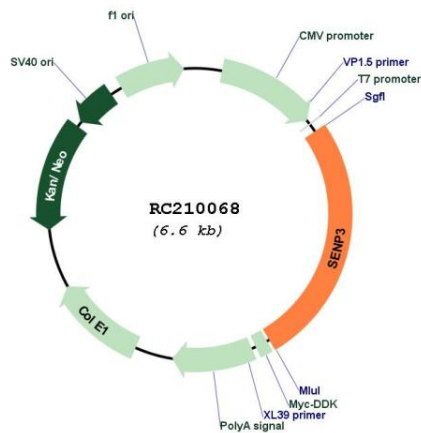
Domains: Peptidase_C48

Protein Families: Druggable Genome, Protease

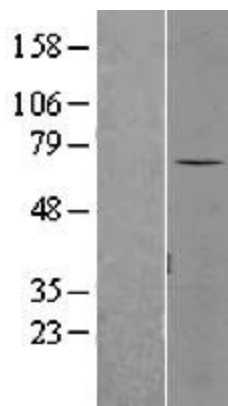
MW: 65 kDa

Gene Summary: The reversible posttranslational modification of proteins by the addition of small ubiquitin-like SUMO proteins (see SUMO1; MIM 601912) is required for numerous biologic processes. SUMO-specific proteases, such as SENP3, are responsible for the initial processing of SUMO precursors to generate a C-terminal diglycine motif required for the conjugation reaction. They also have isopeptidase activity for the removal of SUMO from high molecular mass SUMO conjugates (Di Bacco et al., 2006 [PubMed 16738315]).[supplied by OMIM, Jun 2009]

Product images:



Circular map for RC210068



Western blot validation of overexpression lysate (Cat# [LY402457]) using anti-DDK antibody (Cat# [TA50011-100]). Left: Cell lysates from untransfected HEK293T cells; Right: Cell lysates from HEK293T cells transfected with RC210068 using transfection reagent MegaTran 2.0 (Cat# [TT210002]).