

Product datasheet for **RC210052**

Galectin 7 (LGALS7) (NM_002307) Human Tagged ORF Clone

Product data:

Product Type: Expression Plasmids
Product Name: Galectin 7 (LGALS7) (NM_002307) Human Tagged ORF Clone
Tag: Myc-DDK
Symbol: LGALS7
Synonyms: GAL7; LGALS7A
Mammalian Cell Selection: Neomycin
Vector: pCMV6-Entry (PS100001)
E. coli Selection: Kanamycin (25 ug/mL)
ORF Nucleotide Sequence: >RC210052 representing NM_002307
Red=Cloning site Blue=ORF Green=Tags(s)

TTTTGTAATACGACTCACTATAGGGCGCCGGGAATTCGTCGACTGGATCCGGTACCGAGGAGATCTGCC
GCC**CGGATCGCC**

ATGTCCAACGTCCCCACAAGTCTCGCTGCCGAGGGCATCCGCCCTGGCACGGTGTGAGAATTCGCG
GCTTGGTTCCTCCAATGCCAGCAGGTTCCATGTAACCTGTGTGCGGGGAGGAGCAGGGCTCCGATGC
CGCCCTGCATTTCAACCCCGGCTGGACACGTCGGAGGTGGTCTTCAACAGCAAGGAGCAAGGCTCCTGG
GGCCGCGAGGAGCGGGCCGGGCTTCTTTCCAGCGCGGGCAGCCCTTCGAGGTGCTCATCATCGGT
CAGACGACGGCTTCAAGGCCGTGGTTGGGGACGCCAGTACCACCACTTCGCCACCGCCTGCCGCTGGC
GCGCTGCGCCTGGTGGAGGTGGCGGGGACGTGCAGCTGGACTCCGTGAGGATCTTC

ACGCGTACGCGGCCGCTCGAGCAGAACTCATCTCAGAAGAGGATCTGGCAGCAAATGATATCCTGGATT
ACAAGGATGACGACGATAAGGTTTAA

Protein Sequence: >RC210052 representing NM_002307
Red=Cloning site Green=Tags(s)

MSNVPHKSSLPEGIRPGTVLRIRGLVPPNASRFHVNLLCGEEQGSDAALHFNPRLDTSEVVFNSKEQGSW
GREERPGVQFQRPFEVLIIASDDGFKAVVGDAQYHHRHRLPLARVRLVEVGGDVQLDSVRF

TRTRPLEQKLISEEDLAANDILDYKDDDDKV

Chromatograms: https://cdn.origene.com/chromatograms/ja1441_e12.zip

Restriction Sites: SgfI-MluI

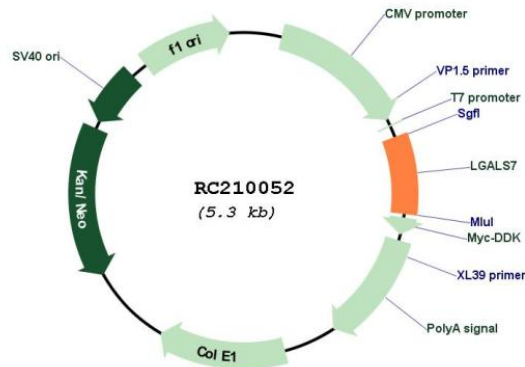


[View online »](#)

Cloning Scheme:



Plasmid Map:



ACCN: NM_002307

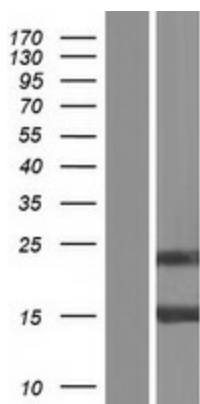
ORF Size: 408 bp

OTI Disclaimer: The molecular sequence of this clone aligns with the gene accession number as a point of reference only. However, individual transcript sequences of the same gene can differ through naturally occurring variations (e.g. polymorphisms), each with its own valid existence. This clone is substantially in agreement with the reference, but a complete review of all prevailing variants is recommended prior to use. [More info](#)

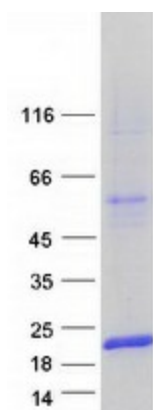
OTI Annotation: This clone was engineered to express the complete ORF with an expression tag. Expression varies depending on the nature of the gene.

Components:	The ORF clone is ion-exchange column purified and shipped in a 2D barcoded Matrix tube containing 10ug of transfection-ready, dried plasmid DNA (reconstitute with 100 ul of water).
Reconstitution Method:	<ol style="list-style-type: none">1. Centrifuge at 5,000xg for 5min.2. Carefully open the tube and add 100ul of sterile water to dissolve the DNA.3. Close the tube and incubate for 10 minutes at room temperature.4. Briefly vortex the tube and then do a quick spin (less than 5000xg) to concentrate the liquid at the bottom.5. Store the suspended plasmid at -20°C. The DNA is stable for at least one year from date of shipping when stored at -20°C.
RefSeq:	<u>NM_002307.1, NP_002298.1</u>
RefSeq Size:	498 bp
RefSeq ORF:	411 bp
Locus ID:	3963
UniProt ID:	<u>P47929</u>
Cytogenetics:	19q13.2
Protein Families:	Secreted Protein
MW:	14.9 kDa
Gene Summary:	The galectins are a family of beta-galactoside-binding proteins implicated in modulating cell-cell and cell-matrix interactions. Differential and in situ hybridization studies indicate that this lectin is specifically expressed in keratinocytes and found mainly in stratified squamous epithelium. A duplicate copy of this gene (GeneID:653499) is found adjacent to, but on the opposite strand on chromosome 19. [provided by RefSeq, Jul 2008]

Product images:



Western blot validation of overexpression lysate (Cat# [LY419405]) using anti-DDK antibody (Cat# [TA50011-100]). Left: Cell lysates from untransfected HEK293T cells; Right: Cell lysates from HEK293T cells transfected with RC210052 using transfection reagent MegaTran 2.0 (Cat# [TT210002]).



Coomassie blue staining of purified LGALS7 protein (Cat# [TP310052]). The protein was produced from HEK293T cells transfected with LGALS7 cDNA clone (Cat# RC210052) using MegaTran 2.0 (Cat# [TT210002]).