

## Product datasheet for **RC210044**

### TCP1 theta (CCT8) (NM\_006585) Human Tagged ORF Clone

#### Product data:

Product Type:	Expression Plasmids
Product Name:	TCP1 theta (CCT8) (NM_006585) Human Tagged ORF Clone
Tag:	Myc-DDK
Symbol:	TCP1 theta
Synonyms:	C21orf112; Cctq; D21S246; PRED71
Mammalian Cell Selection:	Neomycin
Vector:	pCMV6-Entry (PS100001)
E. coli Selection:	Kanamycin (25 ug/mL)



[View online »](#)

**ORF Nucleotide Sequence:**

>RC210044 ORF sequence  
 Red=Cloning site Blue=ORF Green=Tags(s)

TTTTGTAATACGACTCACTATAGGGCGGCCGGAATTCGTCGACTGGATCCGGTACCGAGGAGATCTGCC  
 GCC**CGCATCGCC**

ATGGCGCTTCACGTTCCAAGGCTCCGGCTTTGCCAGATGCTCAAGGAGGGAGCGAAACACTTTTCAG  
 GATTAGAAGAGGCTGTGTATAGAAACATACAAGCTTGCAAGGAGCTTGCCCAAACCACTCGTACAGCATA  
 TGGACCAATGGAATGAACAAAATGTTATCAACCACTTGGAGAAAGTTGTTTGTGACAAAACGATGCAGCA  
 ACTATTTTAAGAGAACTAGAAGTACAGCATCCTGCTGCAAAAATGATTGTAATGGCTTTCATATGCAAG  
 AGCAAGAAGTTGGAGATGGCACAAACTTTGTTCTGGTATTTGCTGGAGCTCTCCTGGAATTAGCTGAAGA  
 ACTTCTGAGGATTGGCTGTCAGTTTCAGAGGTCATAGAAGTTATGAAATAGCCTGCAGAAAAGCTCAT  
 GAGATTCTTCTAATTTGGTATGTTGTTCTGCAAAAACCTTCGAGATATTGATGAAGTCTCATCTCTAC  
 TTCGTACCTCCATAATGAGTAAACAATATGGTAATGAAGTATTTCTGGCCAAGCTTATTGCTCAGGCATG  
 CGTATCTATTTTTCTGATTCCGGCCATTTCAATGTTGATAACATCAGAGTTTGTAAAATCTGGGCTCT  
 GGTATCAGTTCCTTTCAGTATTGCATGGCATGGTTTTTAAGAAGGAAACCGAAGGTGATGTAACATCTG  
 TCAAAGATGCAAAAATAGCAGTGTACTCTTGTCTTTTGTGATGGCATGATAACAGAAAATAAGGGAACAGT  
 GTTGATAAAGACTGCTGAAGAATTGATGAATTTAGTAAGGGAGAAGAAAACCTCATGGATGCACAAGTC  
 AAAGCTATTGCTGATACTGGTGCAAAATGTCGTAGTAACAGGTGGCAAAAGTGGCAGACATGGCTCTTCATT  
 ATGCAAAATAATATAATATCATGTTAGTGAGGCTAAACTCAAAATGGGATCTCCGAAGACTTTGTAAAAC  
 TGTTGGTGCTACAGCTCTTCTAGATTGACACCTCCTGTCCTGAAGAAATGGGACACTGTGACAGTGTT  
 TACCTCTCAGAAGTTGGAGATACTCAGGACAACTGATGGATGACATAGAAAGGCGAGTGGTGGTTAA  
 CCATAGTACTTCGAGGCTCTACAGACAATCTGATGGATGACATAGAAAGGCGAGTGGTGGTTAA  
 TACTTTCAAAGTTCTTACAAGGGATAAACGCTTTGTACCCGGAGGTGGAGCAACAGAAAATTGAATTAGCC  
 AAACAGATCACATCATATGGAGAGACATGTCTGGACTTGAACAGTATGCTATTAAGAAGTTTGGTGGG  
 CATTGGAAGCTATTCCCCGCGCACTGGCAGAAAACCTGGAGTTAAGGCCAATGAAGTAATCTCTAAACT  
 TTATGCAGTACATCAAGAAGGAAATAAAAACGTTGGATTAGATATTGAGGCTGAAGTCCCTGCTGTAAAG  
 GACATGCTGGAAGCTGGTATTCTAGATACTTACCTGGGAAAATATTGGGCTATCAAACCTCGCTACTAATG  
 CTGCAGTCACTGTACTTAGAGTGGATCAGATCATCATGGCAAACAGCTGGTGGCCCAAGCCTCCAAG  
 TGGGAAGAAAGACTGGGATGATGACCAAAATGAT

**ACGCGT**ACGCGGCCGCTCGAGCAGAAACTCATCTCAGAAGAGGATCTGGCAGCAAATGATATCCTGGATT  
 ACAAGGATGACGACGATAAGGTTTAA

**Protein Sequence:**

>RC210044 protein sequence  
 Red=Cloning site Green=Tags(s)

MALHVPKAPGFAQMLKEGAKHFSGLEEAVYRNIQACKELAQTTRTAYGPNGMNKMVINHLEKLFVTNDAA  
 TILRELEVQHPAAKMIVMASHMQEQEVGDGTFVLFVAGALLELAELLRIGLSVSEVIEGYEIACRKAH  
 EILPNLVCCSAKNLRDIDEVSSLLRSTSIMSKQYGNVFLAKLIAQACVSIFPDSGHFNVDNIRVCKILGS  
 GISSSSVLHGMVFKKETEGDVTSVKDAKIAVYSCPFDMITETKGTVLIKTAEELMNFSGKEENLMDAQV  
 KAIADTGANVVVTGGKVADMALHYANKYNIMLVRNSKWDLRRLCKTVGATALPRLTPPVLEEMGHCDV  
 YLSEVGDQVVVFKHEKEDGAISTIVLRGSTDNLMDIERAVDDGVNTFKVLTRDKRLVPGGGATEIELA  
 KQITSYGETCPGLEQYAIKKFAEAFEAIIPRALAENSGVKANEVISKLYAVHQEGNKNVGLDIEAEVPAVK  
 DMLEAGILDITYLGKYWAIKLATNAAVTVLRVDQIIMAKPAGGPKPPSGKKDWDQND

**TR**TRPLEQKLISEEDLAANDILDYKDDDDKV

**Chromatograms:**

[https://cdn.origene.com/chromatograms/mk6086\\_b01.zip](https://cdn.origene.com/chromatograms/mk6086_b01.zip)

**Restriction Sites:**

SgfI-MluI

Cloning Scheme:



ACCN: NM\_006585

ORF Size: 1644 bp

OTI Disclaimer: The molecular sequence of this clone aligns with the gene accession number as a point of reference only. However, individual transcript sequences of the same gene can differ through naturally occurring variations (e.g. polymorphisms), each with its own valid existence. This clone is substantially in agreement with the reference, but a complete review of all prevailing variants is recommended prior to use. [More info](#)

OTI Annotation: This clone was engineered to express the complete ORF with an expression tag. Expression varies depending on the nature of the gene.

Components: The ORF clone is ion-exchange column purified and shipped in a 2D barcoded Matrix tube containing 10ug of transfection-ready, dried plasmid DNA (reconstitute with 100 ul of water).

- Reconstitution Method:
1. Centrifuge at 5,000xg for 5min.
  2. Carefully open the tube and add 100ul of sterile water to dissolve the DNA.
  3. Close the tube and incubate for 10 minutes at room temperature.
  4. Briefly vortex the tube and then do a quick spin (less than 5000xg) to concentrate the liquid at the bottom.
  5. Store the suspended plasmid at -20°C. The DNA is stable for at least one year from date of shipping when stored at -20°C.

RefSeq: [NM\\_006585.4](#)

RefSeq Size: 2007 bp

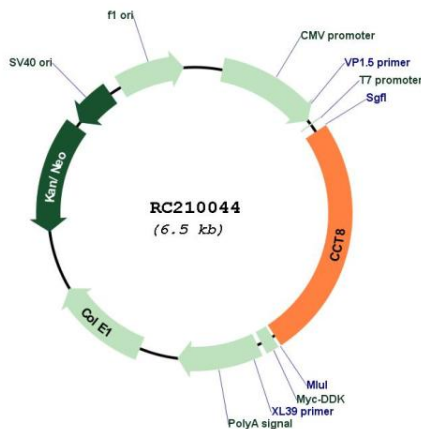
RefSeq ORF: 1647 bp

Locus ID: 10694

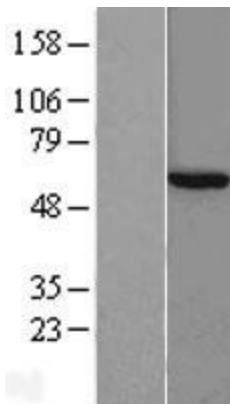
UniProt ID: [P50990](#)

<b>Cytogenetics:</b>	21q21.3
<b>Domains:</b>	cpn60_TCP1
<b>Protein Families:</b>	Druggable Genome
<b>MW:</b>	59.6 kDa
<b>Gene Summary:</b>	This gene encodes the theta subunit of the CCT chaperonin, which is abundant in the eukaryotic cytosol and may be involved in the transport and assembly of newly synthesized proteins. Alternative splicing results in multiple transcript variants of this gene. A pseudogene related to this gene is located on chromosome 1. [provided by RefSeq, Sep 2013]

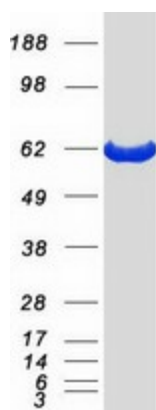
**Product images:**



Circular map for RC210044



Western blot validation of overexpression lysate (Cat# [LY416546]) using anti-DDK antibody (Cat# [TA50011-100]). Left: Cell lysates from untransfected HEK293T cells; Right: Cell lysates from HEK293T cells transfected with RC210044 using transfection reagent MegaTran 2.0 (Cat# [TT210002]).



Coomassie blue staining of purified CCT8 protein (Cat# [TP310044]). The protein was produced from HEK293T cells transfected with CCT8 cDNA clone (Cat# RC210044) using MegaTran 2.0 (Cat# [TT210002]).