

Product datasheet for RC210039

HAP40 (F8A1) (NM_012151) Human Tagged ORF Clone

Product data:

Product Type:	Expression Plasmids
Product Name:	HAP40 (F8A1) (NM_012151) Human Tagged ORF Clone
Tag:	Myc-DDK
Symbol:	HAP40
Synonyms:	DXS522E; F8A; HAP40
Mammalian Cell Selection:	Neomycin
Vector:	pCMV6-Entry (PS100001)
E. coli Selection:	Kanamycin (25 ug/mL)
ORF Nucleotide Sequence:	>RC210039 ORF sequence Red=Cloning site Blue=ORF Green=Tags(s)

TTTGTGAATACGACTCACTATAGGGCGGCCGGAATTCTGTCGACTGGATCCGGTACCGAGGAGATCTGCC
 GCCGCGATCGCC

ATGGCGGCAGCGGCTGCAGGCTGGGCGGCGGCGCGCGGCCCGGGACCCGAGGCCGGGACTTCCTGG
 CCCGCTACCGGCTGGTATCGAACAAGCTGAAGAAGCGGTTCTGCGGAAGCCGAACGTGGCGGAGGCCGG
 CGAGCAGTTCCGACAGCTGGGCCGGGAGCTGCGCGCCAGGAGTGTCTGCCCTACGCGGCTGGTGCCAG
 CTGGCGGTGGCGCTGCCAGCAGGCGCTTCCACGGGCCCGGGAGGCGCTGGCCCTACCGAGGCCG
 CCCGCTCTTCTGCGGCAGGAGCGGACGCGCGCCAGCGCTGGTCTGCCCCGCCGCTACGGGGAGCC
 GCTGCAGGCCGCCGACGCGCCCTGGGCGCCGCGTGCCTGTCACCTCGAGCTGGGCCAGCCGGCGGCC
 GCGCGCGCCCTCTGCCTCGAGCTGGCCGCCGCCCTGCGCGACCTGGGCCAGCCGGCCGCCGCCCGGTC
 ACTTCCAGCGCGCCGCCAGCTCCAGCTGCCCCAGCTGCCCTGGCCGCGCTGCAGGCGCTTGGCGAGGC
 CGCCTCTGCCAGCTGCTGGCGCGGACTACACCGGCGCCCTGGCGGTCTTACGCGCATGCAGCGCCTG
 GCGCGGAGACGGCAGCCACCCGGTGCAGTCACTGCCGCCGCCCGCCGCCGCGCACCCAGCCCGGGC
 CCGGGGCGACGCCGCCCTACCGCCGCGCTGCTTCTCCGAACCTCCGGCTCGGCGGCGCCCTCTCCCGC
 CGCCCTGGGCGCCTTCTCGGACGTGCTGGTCCGCTGCGAGGTGTCCGCGTGTCTGCTGCTCTCTCTG
 CAACCACCGCCGCCAAGCTGCTGCCGAGCAGCCAGACCTGGAGAAGTACTCTGGGAGGCTTTTG
 ACAGCCACGGGCAGGAGAGCAGCGGCCAGCTTCCGAGGAGCTTTCTGCTGCTCCAGTCTTTGGTCAT
 GGCTACCCACGAAAAGGACACGGAAGCCATCAAGTCGCTGCAGGTGGAGATGTGGCCACTGTTGACTGCT
 GAGCAGAACCACCTCTTACCTCGTTCTGCAAGAAACCATCTCCCCCTCAGGACAGGGAGTC

ACGCGTACGCGGCCGCTCGAGCAGAACTCATCTCAGAAGAGGATCTGGCAGCAAATGATATCCTGGATT
 ACAAGGATGACGACGATAAGGTTTAA


[View online »](#)

Protein Sequence: >RC210039 protein sequence
 Red=Cloning site Green=Tags(s)

MAAAAAGLGGGGAGPGPEAGDFLARYRLVSNKLKKRFLRKNVAEAGEQFGQLGRELRAQECLPYAAWCQ
 LAVARCQALFHGPGEALALTEAARLFLRQERDARQLVCPAAYGEPLQAAASALGAAVRLHLELGQPAA
 AAALCLELAAALRDLGQPAAGHFQRAAQLQLPQLAALQALGEAASCQLLARDYTALAVFTRMQRL
 AREHGSHPVQSLPPPPPPAPQPGGATPALPAALLPPNSGSAAPSPAALGAFSDVLVRCEVSRVLLLLLL
 QPPPAKLLPEHAQTLEKYSWEAFDSHGQESSGQLPEELFLLLQSLVMATHEKDEAIKSLQVEMWPLLTA
 EQNHLLHLVLQETISPSGQGV

TRTRPLEQKLISEEDLAANDILDYKDDDDKV

Chromatograms: https://cdn.origene.com/chromatograms/mk6791_g09.zip

Restriction Sites: SgfI-MluI

Cloning Scheme:



ACCN: NM_012151

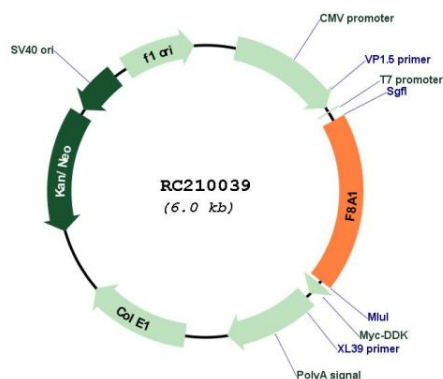
ORF Size: 1113 bp

OTI Disclaimer: Due to the inherent nature of this plasmid, standard methods to replicate additional amounts of DNA in E. coli are highly likely to result in mutations and/or rearrangements. Therefore, OriGene does not guarantee the capability to replicate this plasmid DNA. Additional amounts of DNA can be purchased from OriGene with batch-specific, full-sequence verification at a reduced cost. Please contact our customer care team at custsupport@origene.com or by calling 301.340.3188 option 3 for pricing and delivery.

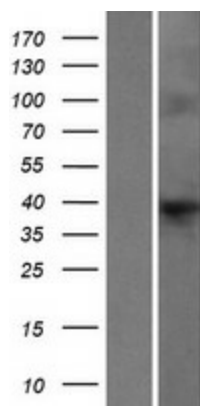
The molecular sequence of this clone aligns with the gene accession number as a point of reference only. However, individual transcript sequences of the same gene can differ through naturally occurring variations (e.g. polymorphisms), each with its own valid existence. This clone is substantially in agreement with the reference, but a complete review of all prevailing variants is recommended prior to use. [More info](#)

OTI Annotation:	This clone was engineered to express the complete ORF with an expression tag. Expression varies depending on the nature of the gene.
Components:	The ORF clone is ion-exchange column purified and shipped in a 2D barcoded Matrix tube containing 10ug of transfection-ready, dried plasmid DNA (reconstitute with 100 ul of water).
Reconstitution Method:	<ol style="list-style-type: none"> 1. Centrifuge at 5,000xg for 5min. 2. Carefully open the tube and add 100ul of sterile water to dissolve the DNA. 3. Close the tube and incubate for 10 minutes at room temperature. 4. Briefly vortex the tube and then do a quick spin (less than 5000xg) to concentrate the liquid at the bottom. 5. Store the suspended plasmid at -20°C. The DNA is stable for at least one year from date of shipping when stored at -20°C.
Note:	Plasmids are not sterile. For experiments where strict sterility is required, filtration with 0.22um filter is required.
RefSeq:	NM_012151.3 , NP_036283.2
RefSeq Size:	1720 bp
RefSeq ORF:	1116 bp
Locus ID:	8263
UniProt ID:	P23610
Cytogenetics:	Xq28
MW:	39.1 kDa
Gene Summary:	This gene is contained entirely within intron 22 of the factor VIII gene; spans less than 2 kb, and is transcribed in the direction opposite of factor VIII. A portion of intron 22 (int22h), containing F8A, is repeated twice extragenically closer to the Xq telomere. Although its function is unknown, the observation that this gene is conserved in the mouse implies it has some function. Unlike factor VIII, this gene is transcribed abundantly in a wide variety of cell types. [provided by RefSeq, Jul 2008]

Product images:



Circular map for RC210039



Western blot validation of overexpression lysate (Cat# [LY415937]) using anti-DDK antibody (Cat# [TA50011-100]). Left: Cell lysates from untransfected HEK293T cells; Right: Cell lysates from HEK293T cells transfected with RC210039 using transfection reagent MegaTran 2.0 (Cat# [TT210002]).