

Product datasheet for **RC210036**

SOX7 (NM_031439) Human Tagged ORF Clone

Product data:

Product Type:	Expression Plasmids
Product Name:	SOX7 (NM_031439) Human Tagged ORF Clone
Tag:	Myc-DDK
Symbol:	SOX7
Mammalian Cell Selection:	Neomycin
Vector:	pCMV6-Entry (PS100001)
E. coli Selection:	Kanamycin (25 ug/mL)
ORF Nucleotide Sequence:	>RC210036 ORF sequence Red=Cloning site Blue=ORF Green=Tags(s)

TTTTGTAATACGACTCACTATAGGGCGGCCGGAATTCGTCGACTGGATCCGGTACCGAGGAGATCTGCCGCC**CGATCGCC**

ATGGCTTCGCTGCTGGGAGCCTACCCTTGGCCCGAGGGTCTCGAGTGCCCGGCCCTGGACGCCGAGCTGT
CGGATGGACAATCGCCGCGGCCGTCCCCGGCCCCGGGGGACAAGGGCTCCGAGAGCCGTATCCGGCG
GCCCATGAACGCCTTCATGGTTTGGGCCAAGGACGAGAGGAAACGGCTGGCAGTGCAGAACCCGGACCTG
CACAACGCCGAGCTCAGCAAGATGCTGGGAAAGTCGTGGAAGGCGCTGACGCTGTCCAGAAGAGGCCGT
ACGTGGACGAGGGGAGCGGCTGCGCTGCAGCACATGCAGGACTACCCCACTACAAGTACCGGCCGCG
CAGGAAGAAGCAGGCCAAGCGGCTGTGCAAGCGGTGGACCCGGGCTTCCTTCTGAGTCCCTCTCCCGG
GACCAGAACGCCCTGCCGAGAAGAGAAGCGGCAGCCGGGGGCGCTGGGGGAGAAGGAGGACAGGGGTG
AGTACTCCCCGGCACTGCCCTGCCAGCCTCCGGGGCTGCTACCACGAGGGGCCGGCTGGTGGTGGCGG
CGGCGGCACCCCGAGCAGTGTGGACACGTACCCGTACGGGCTGCCCACACCTCCTGAAATGTCTCCCTG
GACGTGCTGGAGCCGGAGCAGACCTTCTTCTCCTCCCCCTGCCAGGAGGAGCATGGCCATCCCCGCCGA
TCCCCACCTGCCAGGGCACCCGTACTACCGGAGTACGCCCCAAGCCCTCTCCACTGTAGCCACCCCT
GGGCTCCCTGGCCCTTGCCAGTCCCCGGCGTCTCATGATGTCCCTGTACCCGGCTGTCCCCATCT
CCTGCCTATTACTCCCCGCCACCTACCACCCACTCCACTCCAACCTCCAAGCCACCTGGGCCAGCTCT
CCCCGCTCCTGAGCACCTGGCTTCGACGCCCTGGATCAACTGAGCCAGGTGGAACCTCTGGGGGACAT
GGATCGCAATGAATTCGACCAAGTATTTGAACACTCCTGGCCACCCAGACTCCGCCACAGGGGCCATTGGCC
CTCAGTGGGCATGTTCCGGTCTCCAGGTGACACCAACGGGTCCACAGAGACCAGCCTCATCTCCGTCC
TGCTGATGCCACGGCCAGTACTACAACAGCTACAGTGTGCA

ACGCGTACGCGGCCGCTCGAGCAGAACTCATCTCAGAAGAGGATCTGGCAGCAAATGATATCCTGGATT
ACAAGGATGACGACGATAAGGTTTAA



[View online »](#)

Protein Sequence: >RC210036 protein sequence
Red=Cloning site Green=Tags(s)

MASLLGAYPWPEGLECPALDAELSDGQSPPAVPRPPGDKGSESRIRPMNAFMVWAKDERKRLAVQNPDL
 HNAELSKMLGKSWKAL T L S Q K R P Y V D E A E R L R L Q H M Q D Y P N Y K Y R P R R K K Q A K R L C K R V D P G F L L S S L S R
 D Q N A L P E K R S G S R G A L G E K E D R G E Y S P G T A L P S L R G C Y H E G P A G G G G G G T P S S V D T Y P Y G L P T P P E M S P L
 D V L E P E Q T F F S S P C Q E E H G H P R R I P H L P G H P Y S P E Y A P S P L H C S H P L G S L A L G Q S P G V S M M S P V P G C P P S
 P A Y Y S P A T Y H P L H S N L Q A H L G Q L S P P P E H P G F D A L D Q L S Q V E L L G D M D R N E F D Q Y L N T P G H P D S A T G A M A
 L S G H V P V S Q V T P T G P T E T S L I S V L A D A T A T Y Y N S Y S V S

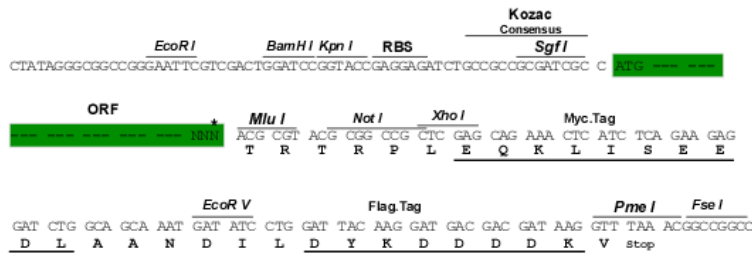
TRTRPLEQKLISEEDLAANDILDYKDDDDKV

Chromatograms: https://cdn.origene.com/chromatograms/mk6271_d08.zip

Restriction Sites: SgfI-MluI

Cloning Scheme:

Cloning sites used for ORF Shuttling:



* The last codon before the Stop codon of the ORF

ACCN: NM_031439

ORF Size: 1164 bp

OTI Disclaimer: The molecular sequence of this clone aligns with the gene accession number as a point of reference only. However, individual transcript sequences of the same gene can differ through naturally occurring variations (e.g. polymorphisms), each with its own valid existence. This clone is substantially in agreement with the reference, but a complete review of all prevailing variants is recommended prior to use. [More info](#)

OTI Annotation: This clone was engineered to express the complete ORF with an expression tag. Expression varies depending on the nature of the gene.

Components: The ORF clone is ion-exchange column purified and shipped in a 2D barcoded Matrix tube containing 10ug of transfection-ready, dried plasmid DNA (reconstitute with 100 ul of water).

Reconstitution Method:

1. Centrifuge at 5,000xg for 5min.
2. Carefully open the tube and add 100ul of sterile water to dissolve the DNA.
3. Close the tube and incubate for 10 minutes at room temperature.
4. Briefly vortex the tube and then do a quick spin (less than 5000xg) to concentrate the liquid at the bottom.
5. Store the suspended plasmid at -20°C. The DNA is stable for at least one year from date of shipping when stored at -20°C.

RefSeq: [NM_031439.4](#)

RefSeq Size: 3278 bp

RefSeq ORF: 1167 bp

Locus ID: 83595

UniProt ID: [Q9BT81](#)

Cytogenetics: 8p23.1

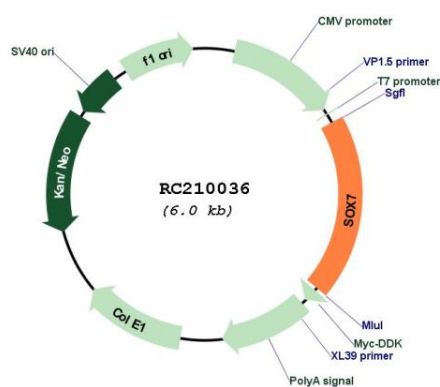
Domains: HMG

Protein Families: ES Cell Differentiation/IPS, Induced pluripotent stem cells, Transcription Factors

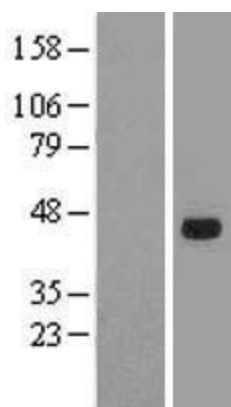
MW: 42.2 kDa

Gene Summary: This gene encodes a member of the SOX (SRY-related HMG-box) family of transcription factors involved in the regulation of embryonic development and in the determination of the cell fate. The encoded protein may act as a transcriptional regulator after forming a protein complex with other proteins. The protein may play a role in tumorigenesis. A similar protein in mice is involved in the regulation of the wntless-type MMTV integration site family (Wnt) pathway. [provided by RefSeq, Jul 2008]

Product images:



Circular map for RC210036



Western blot validation of overexpression lysate (Cat# [LY410514]) using anti-DDK antibody (Cat# [TA50011-100]). Left: Cell lysates from untransfected HEK293T cells; Right: Cell lysates from HEK293T cells transfected with RC210036 using transfection reagent MegaTran 2.0 (Cat# [TT210002]).