

Product datasheet for **RC210034**

ORAI1 (NM_032790) Human Tagged ORF Clone

Product data:

Product Type: Expression Plasmids
Product Name: ORAI1 (NM_032790) Human Tagged ORF Clone
Tag: Myc-DDK
Symbol: ORAI1
Synonyms: CRACM1; IMD9; ORAT1; TAM2; TMEM142A
Mammalian Cell Selection: Neomycin
Vector: pCMV6-Entry (PS100001)
E. coli Selection: Kanamycin (25 ug/mL)
ORF Nucleotide Sequence: >RC210034 representing NM_032790
 Red=Cloning site Blue=ORF Green=Tags(s)

TTTTGTAATACGACTCACTATAGGGCGGCCGGAATTCGTCGACTGGATCCGGTACCGAGGAGATCTGCC
 GCC**CGATCGCC**

ATGCATCCGGAGCCCGCCCGCCCGGAGCCGAGCAGTCCCGAGCTTCCCCAAGCGGCGGCAGCACCA
 CCAGCGGCAGCCCGGAGCCCGCCCGCAGCGGGGACGGGGAGCCCGGGGGCCCGCCACCGCCGCG
 GTCGCGCGTCACTACCCGGACTGGATCGGCCAGAGTTACTCCGAGGTGATGAGCCTCAACGAGCACTCC
 ATGCAGGCGCTGTCTGGCGAAGCTCTACTTGAGCCGCGCAAGCTTAAAGCCTCCAGCCGGACCTCGG
 CTCTGCTCTCCGGCTTCGCCATGGTGGCAATGGTGGAGGTGCAGCTGGACGCTGACCACGACTACCCACC
 GGGGCTGCTCATCGCCTTCAAGTGCCTGCACCACAGTGGTGGCTGTGCACCTGTTTGGCTCATGATC
 AGCACCTGCATCCTGCCAACATCGAGGCGGTGAGCAACGTGCACAATCTCAACTCGGTCAAGGAGTCCC
 CCCATGAGCGCATGCACCGCCACATCGAGCTGGCCTGGGCCTTCTCCACCGTCAATCGGCACGCTGTCTT
 CCTAGCTGAGGTGGTGTCTGCTGCTGGGTCAAGTTCTTGCCCTCAAGAAGCAGCCAGGCCAGCCAAGG
 CCCACCAGCAAGCCCCCGCCAGTGGCGCAGCAGCCAACGTGAGCAGCAGCGGCATACCCCGGGCCAGG
 CAGCTGCCATCGCCTCGACCACCATCATGGTGCCTTCGGCTGATCTTTATCGTCTTCGCCGTCACCT
 CTACCGCTCACTGGTTAGCCATAAGACCACCGACAGTTCAGGAGCTCAACGAGCTGGCGGAGTTTGCC
 CGCTTACAGGACCAGCTGGACCACAGAGGGGACCACCCCTGACGCCCGCAGCCACTATGCC

ACGCGTACGCGGCGCCTCGAGCAGAAACTCATCTCAGAAGAGGATCTGGCAGCAAATGATATCCTGGATT
 ACAAGGATGACGACGATAAGGTTTAA



[View online »](#)

Protein Sequence: >RC210034 representing NM_032790
Red=Cloning site Green=Tags(s)

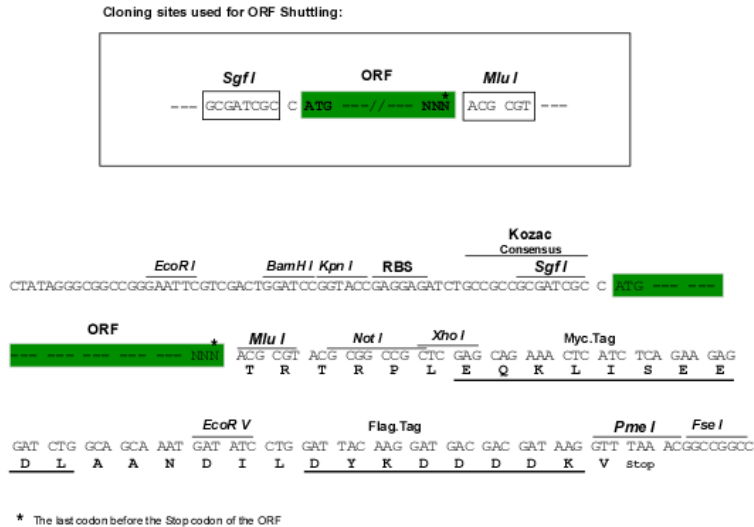
MHPEPAPPPSRSSPELPPSGGSTTSGSRRSRRRSGDGEPPGAPPPPPSAVTYPDWIGQSYSEVMSLNEHS
 MQALSWRKLYLSRAKLKASSRTSALLSGFAMVAMVEVQLDADHDYPPGLLIASFACCTTVLVAVHLFALMI
 STCILPNIEAVSNVHNLNSVKESPHERMHRHIELAWAFSTVIGTLLFLAEVLLCWVKFLPLKKQPGQPR
 PTSKPPASGAAANVSTSGITPGQAAAIASSTIMVPFGLIFIVFAVHFYRSLVSHKTDQRQELNELAEFA
 RLQDQLDHRGDHPLTPGSHYA

TRTRPLEQKLISEEDLAANDILDYKDDDDKV

Chromatograms: https://cdn.origene.com/chromatograms/mg2392_f12.zip

Restriction Sites: SgfI-MluI

Cloning Scheme:



ACCN: NM_032790

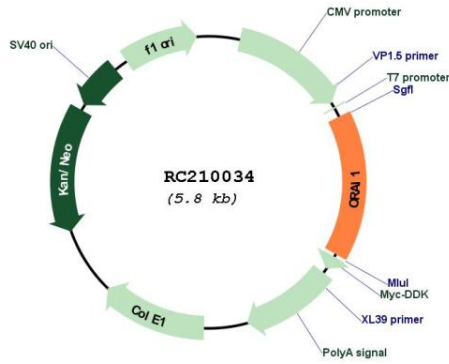
ORF Size: 903 bp

OTI Disclaimer: Due to the inherent nature of this plasmid, standard methods to replicate additional amounts of DNA in E. coli are highly likely to result in mutations and/or rearrangements. Therefore, OriGene does not guarantee the capability to replicate this plasmid DNA. Additional amounts of DNA can be purchased from OriGene with batch-specific, full-sequence verification at a reduced cost. Please contact our customer care team at custsupport@origene.com or by calling 301.340.3188 option 3 for pricing and delivery.

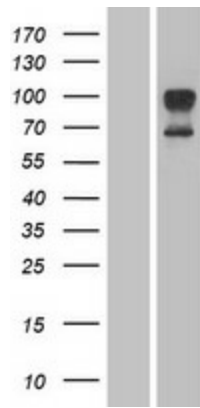
The molecular sequence of this clone aligns with the gene accession number as a point of reference only. However, individual transcript sequences of the same gene can differ through naturally occurring variations (e.g. polymorphisms), each with its own valid existence. This clone is substantially in agreement with the reference, but a complete review of all prevailing variants is recommended prior to use. [More info](#)

OTI Annotation:	This clone was engineered to express the complete ORF with an expression tag. Expression varies depending on the nature of the gene.
Components:	The ORF clone is ion-exchange column purified and shipped in a 2D barcoded Matrix tube containing 10ug of transfection-ready, dried plasmid DNA (reconstitute with 100 ul of water).
Reconstitution Method:	<ol style="list-style-type: none">1. Centrifuge at 5,000xg for 5min.2. Carefully open the tube and add 100ul of sterile water to dissolve the DNA.3. Close the tube and incubate for 10 minutes at room temperature.4. Briefly vortex the tube and then do a quick spin (less than 5000xg) to concentrate the liquid at the bottom.5. Store the suspended plasmid at -20°C. The DNA is stable for at least one year from date of shipping when stored at -20°C.
Note:	Plasmids are not sterile. For experiments where strict sterility is required, filtration with 0.22um filter is required.
RefSeq:	<u>NM_032790.3</u>
RefSeq Size:	1497 bp
RefSeq ORF:	906 bp
Locus ID:	84876
UniProt ID:	<u>Q96D31</u>
Cytogenetics:	12q24.31
Protein Families:	Transmembrane
MW:	32.5 kDa
Gene Summary:	The protein encoded by this gene is a membrane calcium channel subunit that is activated by the calcium sensor STIM1 when calcium stores are depleted. This type of channel is the primary way for calcium influx into T-cells. Defects in this gene are a cause of immune dysfunction with T-cell inactivation due to calcium entry defect type 1 (IDTICED1). [provided by RefSeq, Sep 2011]

Product images:



Circular map for RC210034



Western blot validation of overexpression lysate (Cat# [LY403208]) using anti-DDK antibody (Cat# [TA50011-100]). Left: Cell lysates from untransfected HEK293T cells; Right: Cell lysates from HEK293T cells transfected with RC210034 using transfection reagent MegaTran 2.0 (Cat# [TT210002]).