

Product datasheet for **RC210030**

AP1S2 (NM_003916) Human Tagged ORF Clone

Product data:

Product Type:	Expression Plasmids
Product Name:	AP1S2 (NM_003916) Human Tagged ORF Clone
Tag:	Myc-DDK
Symbol:	AP1S2
Synonyms:	DC22; MRX59; MRXS5; MRXS21; MRXSF; PGS; SIGMA1B
Mammalian Cell Selection:	Neomycin
Vector:	pCMV6-Entry (PS100001)
E. coli Selection:	Kanamycin (25 ug/mL)
ORF Nucleotide Sequence:	>RC210030 representing NM_003916 Red=Cloning site Blue=ORF Green=Tags(s)

TTTTGTAATACGACTCACTATAGGGCGGCCGGAATTCGTCGACTGGATCCGGTACCGAGGAGATCTGCC
 GCC**CGATCGCC**

ATGCAGTTTATGTTGCTTTTATGTCGTCAGGAAAGCTTCGACTGCAAAAATGGTATGTCCCACTATCAG
 ACAAAGAGAAGAAAAAGATCACAAGAGAACTTGTTTCAGACCGTTTTAGCACGGAACCTAAAATGTGCAG
 CTTCTTGAGTGGCGAGATCTGAAGATTGTTTACAAAAGATATGCTAGTCTGTATTTTGTGTGCTATT
 GAGGATCAGGACAATGAACATAATACCCTGGAATAATTCATCGTTATGTGAATTACTTGACAAGTATT
 TCGGCAGTGTCTGTGAAGTAGATATCATCTTTAATTTTGAGAAGGCTTATTTATTTTGGATGAGTTTCT
 TTTGGGAGGGGAAGTTCAGGAAACATCCAAGAAAAATGTCCTTAAAGCAATTGAGCAGGCTGATCTACTG
 CAGGAGGAAGCTGAAACCCACGTAGTGTCTTGAAGAAATTGGACTGACA

ACGCGTACGCGGCCGCTCGAGCAGAACTCATCTCAGAAGAGGATCTGGCAGCAAATGATATCCTGGATT
 ACAAGGATGACGACGATAAGGTTTAA

Protein Sequence:	>RC210030 representing NM_003916 Red=Cloning site Green=Tags(s)
-------------------	--

MQFMLLFSRQGLRLQKWYVPLSDKEKKKITRELVTQVLARKPKMCSFLEWRDLKIVYKRYASLYFCCAI
 EDQDNELITLEIIHRYVELLDKYFGSVCELDIIIFNFEKAYFILDEFLLGGEVQETSKKNVLKAIQADLL
 QEEAETPRSVLEEIGLT

TRTRPLEQKLISEEDLAANDILDYKDDDDKV

Chromatograms:	https://cdn.origene.com/chromatograms/ja1459_e02.zip
----------------	---


[View online »](#)

Restriction Sites: SgfI-MluI

Cloning Scheme:



ACCN: NM_003916

ORF Size: 471 bp

OTI Disclaimer: Due to the inherent nature of this plasmid, standard methods to replicate additional amounts of DNA in E. coli are highly likely to result in mutations and/or rearrangements. Therefore, OriGene does not guarantee the capability to replicate this plasmid DNA. Additional amounts of DNA can be purchased from OriGene with batch-specific, full-sequence verification at a reduced cost. Please contact our customer care team at custsupport@origene.com or by calling 301.340.3188 option 3 for pricing and delivery.

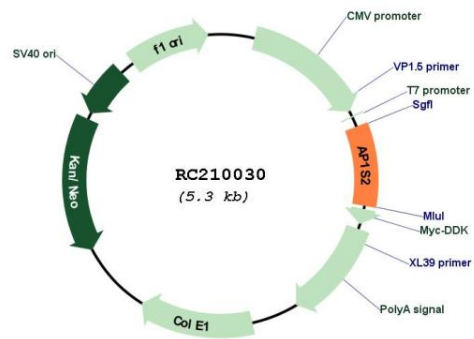
The molecular sequence of this clone aligns with the gene accession number as a point of reference only. However, individual transcript sequences of the same gene can differ through naturally occurring variations (e.g. polymorphisms), each with its own valid existence. This clone is substantially in agreement with the reference, but a complete review of all prevailing variants is recommended prior to use. [More info](#)

OTI Annotation: This clone was engineered to express the complete ORF with an expression tag. Expression varies depending on the nature of the gene.

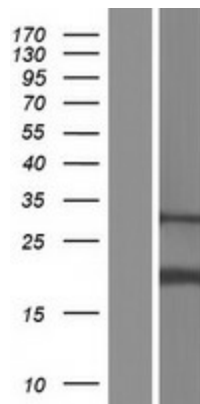
Components: The ORF clone is ion-exchange column purified and shipped in a 2D barcoded Matrix tube containing 10ug of transfection-ready, dried plasmid DNA (reconstitute with 100 ul of water).

Reconstitution Method:	<ol style="list-style-type: none"> 1. Centrifuge at 5,000xg for 5min. 2. Carefully open the tube and add 100ul of sterile water to dissolve the DNA. 3. Close the tube and incubate for 10 minutes at room temperature. 4. Briefly vortex the tube and then do a quick spin (less than 5000xg) to concentrate the liquid at the bottom. 5. Store the suspended plasmid at -20°C. The DNA is stable for at least one year from date of shipping when stored at -20°C.
Note:	Plasmids are not sterile. For experiments where strict sterility is required, filtration with 0.22um filter is required.
RefSeq:	<u>NM_003916.5</u>
RefSeq Size:	2283 bp
RefSeq ORF:	474 bp
Locus ID:	8905
UniProt ID:	<u>P56377</u>
Cytogenetics:	Xp22.2
Domains:	Clat_adaptor_s
Protein Families:	Druggable Genome
Protein Pathways:	Lysosome
MW:	18.4 kDa
Gene Summary:	<p>Adaptor protein complex 1 is found at the cytoplasmic face of coated vesicles located at the Golgi complex, where it mediates both the recruitment of clathrin to the membrane and the recognition of sorting signals within the cytosolic tails of transmembrane receptors. This complex is a heterotetramer composed of two large, one medium, and one small adaptin subunit. The protein encoded by this gene serves as the small subunit of this complex and is a member of the adaptin protein family. Transcript variants encoding different isoforms have been found for this gene. [provided by RefSeq, Jan 2013]</p>

Product images:



Circular map for RC210030



Western blot validation of overexpression lysate (Cat# [LY418354]) using anti-DDK antibody (Cat# [TA50011-100]). Left: Cell lysates from un-transfected HEK293T cells; Right: Cell lysates from HEK293T cells transfected with RC210030 using transfection reagent MegaTran 2.0 (Cat# [TT210002]).