

Product datasheet for **RC210029**

IQCE (NM_152558) Human Tagged ORF Clone

Product data:

Product Type:	Expression Plasmids
Product Name:	IQCE (NM_152558) Human Tagged ORF Clone
Tag:	Myc-DDK
Symbol:	IQCE
Synonyms:	1700028P05Rik; PAPA7
Mammalian Cell Selection:	Neomycin
Vector:	pCMV6-Entry (PS100001)
E. coli Selection:	Kanamycin (25 ug/mL)



[View online »](#)

ORF Nucleotide Sequence:

>RC210029 ORF sequence
 Red=Cloning site Blue=ORF Green=Tags(s)

TTTTGTAATACGACTCACTATAGGGCGGCCGGGAATTCGTCGACTGGATCCGGTACCGAGGAGATCTGCC
 GCC**GCGATCGCC**

ATGTTCTGGGCACCGGGGAGCCGGCCTTGGACACGGGAGATGACAGTCTGTCTGCAGTCACCTTTGACT
 CTGATGTGGAGACGAAAGCAAAAAGGAAAGCTTTCCACAAACCTCCACCCACATCGCAAAGTCACCTTA
 TCTCTCTAAGCCGAGAAAAGTGGCCTCCTGGAGGTCCCTCAGGACGGCAGGGAGCATGCCTCTGGGCGGC
 CGAGCGTCCCTGACCCCGCAGAAGCTGTGGCTGGGAACCGCAAAGCCAGGAAGTCTGACCCAGGCCCTGA
 ACTCACCCCTCACCTGGGAGCATGCGTGGACTGGCGTCCCGGGCGGCACTCCTGACTGTCTGACAGACAC
 CTTCAGAGTGAAGAGGCCACATCTCAGGCGCTCTGCCAGCAACGGTCATGTCCCTGGGACTCCTGTCTAC
 AGAGAAAAAGAAGATATGTATGACGAGATTATTGAGTTAAGAAGTCATTGCACGTGCAGAAGAGCGACG
 TGGACCTGATGAGAACGAAGCTCCGGCGCTGGAGGAGGAAAACAGCAGGAAGGACCGGCAGATAGAGCA
 GCTCCTGGATCCAGCCGCGGCAGGATTTTGTTCGGACTCTGGCAGAGAAAAGGCCGATGCCAGTTGG
 GTCAATTAACGGGCTGAAGCAGAGGATCCTGAAGCTGGAACAGCAGTGCAAGGAGAAGGACGGCACCATCA
 GGAAACTCCAGACCGATATGAAGACTACCAACCTGGAAGAGATGCGGATCGCCATGGAGACATACTACGA
 GGAGGTGCATCGTCTCCAGACCTCTTGGAAGTTCTGAAACCACCGAAAGAAGCCCTGGGGGAGAAG
 AAGACGGGCGCCAAAAGGCAGAAGAAGATGGGCAGTGCCTCCTGAGCTTGTCCCGGAGTGTCCAGGAGC
 TCACGGAAGAGAACCAGAGCCTGAAGGAGGACCTGGACCGCGTGTGAGCACCTCCCAACCATCTCAA
 GACACAGGGTTATGTGGAGTGGAGCAAGCCCGGCTGTGAGGCGCATTGTGGAGCTGGAGAAGAACTA
 AGTGTGATGGAGAGCTCAAAATCACACGCCGACAGCCAGTCAAGTACACCCGCCAGCCTGCCTTGAT
 CCAGCTCTGCGCTGCACAGACAGCCACGAGGGGACCGCAACAAGGACCACGAGCGTCTCCGAGGGGCTGT
 GAGAGACCTGAAGGAAGAGCGGACCGCGCTGCAGGAGCAGCTACTGCAGAGAGATTTGGAGGTGAAGCAG
 CTCTGCAGGCGAAGGCCGACCTGGAGAAGGAGCTGGAGTGCAGGAGGGGAGGAGGAGAGGAGAG
 AGCGAGAGGAGGTTTTGAGAGAGGAGATTACAGACTTACCAGCAAGCTCCAAGAATTGCAAGAAATGAA
 GAAAGAAGAGAAAGAGGATTGCCCGGAAGTTCTCATAAGGCCCAAGAGCTCCAGCTCCCACTCCAGC
 AGCAGGCACTGCGAGCAAGACTGGCCGCCGATTCCAGCGAGGAGGGGCTCCCGCGGCCCGCTCCCTCT
 GCTCTGATGGGAGAAGAGACGCCGCGCCAGAGTCTGCAGGCCAGTGGAAAGTGTACAAGCACAAGAA
 AAAAAAGGCTGTCTGGATGAGGCGGCTGTGGTCTTCAGGCAGCTTTCAGGGGACATCTCACGCGGACA
 AAGCTCTTAGCAAGCAAAGCACATGGCTCAGAGCCACCCAGCGTCCAGGCTCTCAGACCAGAGCTCTC
 CTGTGCCCGCGTTCCGAGCCCCATCGCCAGGCCACGGGACGCCCTGTGCAGGAGGAGGCCATCGTCAT
 CATCCAGTCCGCTCTGCGGGCACACCTGGCCCGGGCCAGGCACAGTGTACCGGTAAAAGAACCACCACC
 GCAGCTTCTACCAGGAGGAGATCGGCTTACGCCACACAGGGGACGCCTCCTCCCAACCCTTCTCGCAG
 CTCTTCTGACCCCTCTCCCTCAGGGCCACAGGCTTGGCACCTTACCTGGGGATGACGTCAACTCCGA
 TGATTCGACGATATTGTATTGCACCGTCTCTGCCACGAAGAAGCTTTCCAGTT

ACGCGTACGCGGGCGCTCGAGCAGAACTCATCTCAGAAGAGGATCTGGCAGCAAATGATATCCTGGATT
 ACAAGGATGACGACGATAAGGTTTAA

Protein Sequence: >RC210029 protein sequence
Red=Cloning site Green=Tags(s)

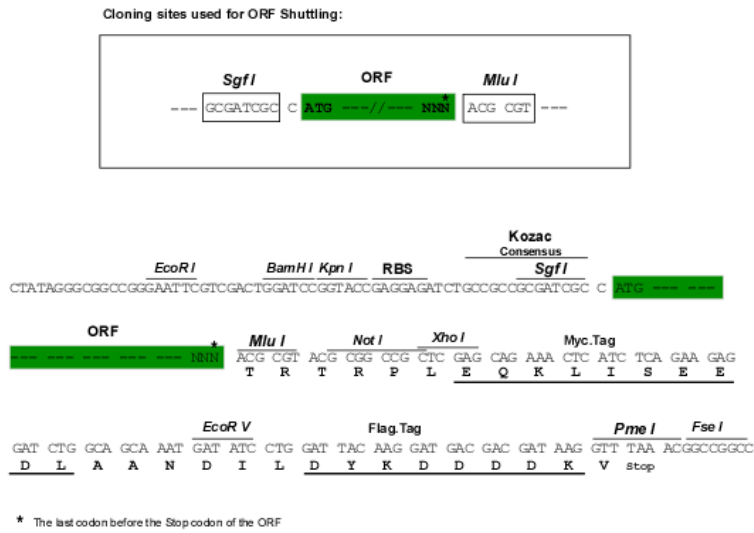
MFLGTGEPALDTGDDSLSAVTFDSVETKAKRKAFFHKPPPTSPKSPYLSKPRKVASWRSLRTAGSMPLGG
 RASLTPQKLWLTAKPGSLTQALNSPLTWEHAWTGVPGGTPDCLTDTFRVKRPHLRRSASNGHVPGTPVY
 REKEDMYDEIIELKKSLSHVQKSDVDLMRTKLRRLEEENSRKDRQIEQLLDPSRGTDVVRTLAEKRPDASW
 VINGLKQRILKLEQQCKEKDGTIRKLQTDKMTTNLEEMRIAMETYYEEVHRLQTLASSETTGKKPLGEK
 KTGAKRQKKMGSALLSLRSVQELTEENQSLKEDLDRVLSTPTISKTQGYVEWSKPRLLRRIVELEKLL
 SVMESSKSHAAEPVRSHPPACLASSALHRQPRGDRNKDHERLRGAVRDLKEERTALQEQLLQRDLEVKQ
 LLQAKADLEKELECAREGEEERREREVLEEEIQTLSKQLQELQEMKKEEKEDCPEVPHKAQELPAPTPS
 SRHCEQDWPDSSEGLPRRSPCSDGRRDAAARVLQAQWKVYKHKKKKAVLDEAAVVLQAQFRGHLTRT
 KLLASKAHGSEPPSVPGLSDQSSPVRVPSPIAQATGSPVQEEAIVIIQSALRAHLARARHSATGKRTTT
 AASTRRRSASATHGDASSPFLAALPDPSPSGPQALAPLPGDDVNSDDSDDIVIAPSLPTKNFPV

TRTRPLEQKLISEEDLAANDILDYKDDDDKV

Chromatograms: https://cdn.origene.com/chromatograms/mk6543_f12.zip

Restriction Sites: Sgfl-MluI

Cloning Scheme:



ACCN: NM_152558

ORF Size: 2085 bp

OTI Disclaimer: Due to the inherent nature of this plasmid, standard methods to replicate additional amounts of DNA in E. coli are highly likely to result in mutations and/or rearrangements. Therefore, OriGene does not guarantee the capability to replicate this plasmid DNA. Additional amounts of DNA can be purchased from OriGene with batch-specific, full-sequence verification at a reduced cost. Please contact our customer care team at custsupport@origene.com or by calling 301.340.3188 option 3 for pricing and delivery.

The molecular sequence of this clone aligns with the gene accession number as a point of reference only. However, individual transcript sequences of the same gene can differ through naturally occurring variations (e.g. polymorphisms), each with its own valid existence. This clone is substantially in agreement with the reference, but a complete review of all prevailing variants is recommended prior to use. [More info](#)

OTI Annotation: This clone was engineered to express the complete ORF with an expression tag. Expression varies depending on the nature of the gene.

Components: The ORF clone is ion-exchange column purified and shipped in a 2D barcoded Matrix tube containing 10ug of transfection-ready, dried plasmid DNA (reconstitute with 100 ul of water).

Reconstitution Method:

1. Centrifuge at 5,000xg for 5min.
2. Carefully open the tube and add 100ul of sterile water to dissolve the DNA.
3. Close the tube and incubate for 10 minutes at room temperature.
4. Briefly vortex the tube and then do a quick spin (less than 5000xg) to concentrate the liquid at the bottom.
5. Store the suspended plasmid at -20°C. The DNA is stable for at least one year from date of shipping when stored at -20°C.

RefSeq: [NM_152558.2](#), [NP_689771.2](#)

RefSeq Size: 6887 bp

RefSeq ORF: 2088 bp

Locus ID: 23288

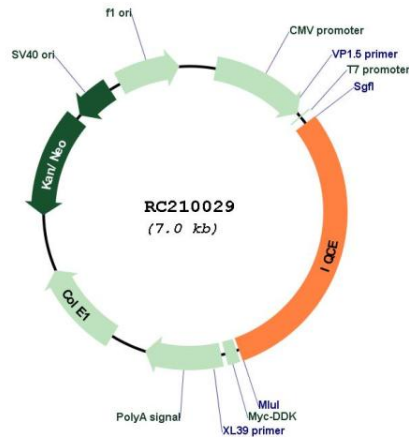
UniProt ID: [Q6IPM2](#)

Cytogenetics: 7p22.3

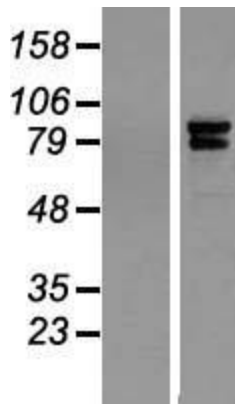
MW: 77.4 kDa

Gene Summary: Component of the EvC complex that positively regulates ciliary Hedgehog (Hh) signaling (By similarity). Required for proper limb morphogenesis (PubMed:28488682).[UniProtKB/Swiss-Prot Function]

Product images:



Circular map for RC210029



Western blot validation of overexpression lysate (Cat# [LY407468]) using anti-DDK antibody (Cat# [TA50011-100]). Left: Cell lysates from untransfected HEK293T cells; Right: Cell lysates from HEK293T cells transfected with RC210029 using transfection reagent MegaTran 2.0 (Cat# [TT210002]).