

Product datasheet for RC210028

PIGH (NM_004569) Human Tagged ORF Clone

Product data:

Product Type: Expression Plasmids
Product Name: PIGH (NM_004569) Human Tagged ORF Clone
Tag: Myc-DDK
Symbol: PIGH
Synonyms: GPI-H
Mammalian Cell Selection: Neomycin
Vector: pCMV6-Entry (PS100001)
E. coli Selection: Kanamycin (25 ug/mL)
ORF Nucleotide Sequence: >RC210028 ORF sequence
 Red=Cloning site Blue=ORF Green=Tags(s)

TTTTGTAATACGACTCACTATAGGGCGGCCGGAATTCGTCGACTGGATCCGGTACCGAGGAGATCTGCC
 GCC**CGATCGCC**

ATGGAGGATGAGCGGAGCTTTTCGGATATCTGCGGCGGCCGCTGGCGTGCAGCGCCGCTACTACTCCC
 CGTCCTGCCGGAATTCTGCCTCAGCTGCCCTCGGCTCTCGTGCCTCGCTCACCCTGTCACCTGCAC
 GGTGTGGCTGGCGGCTACGGACTCTTCACCCTCTGCGAGAACAGCATGATCCTCTCTGCTGCCATCTC
 ATCACCCTCTTAGGCTGCTTGGTTATCTCCATTTTGTGAAGATTGATCAGGAGACTCTGTTAATCATTG
 ATTCCCTTGGCATTGAGATGACTTCATCTTATGCTTCAGGCAAAGAAAGCACTACCTTCATAGAAATGGG
 CAAGGTCAAGGATATTGTCATCAATGAGGCCATTTACATGCAGAAGGTGATTTACTACCTCTGCATCTTA
 TTGAAAGATCCAGTGGAACCACATGGGATATCCCAAGTAGTACCCGCTCTCCAGAGTGCCAAAGCCCGGC
 TGGACTGCTTGATTGAAGTATACAGGAGCTGCCAGGAGATCCTGGCACACCAGAAAGCCACATCAACAAG
 CCCA

ACGCGTACGCGGCCGCTCGAGCAGAAACTCATCTCAGAAGAGGATCTGGCAGCAAATGATATCCTGGATT
 ACAAGGATGACGACGATAAGGTTTAA

Protein Sequence: >RC210028 protein sequence
 Red=Cloning site Green=Tags(s)

MEDERSFSDICGRLALQRRYSPSCREFCLSCPRLSLRSLTAVTCTVWLAAYGLFTLCENSMILSAAIF
 ITLLGLLGYLHFVKIDQETLLIIDSLGIQMTSSYASGKESTTFIEMGKVKDIVINEAIYMQKVIYYLCIL
 LKDPVEPHGISQVVPVFQSAKPRLDCLIEVYRSCQEILAHQKATSTSP

TRTRPLEQKLISEEDLAANDILDYKDDDDKV

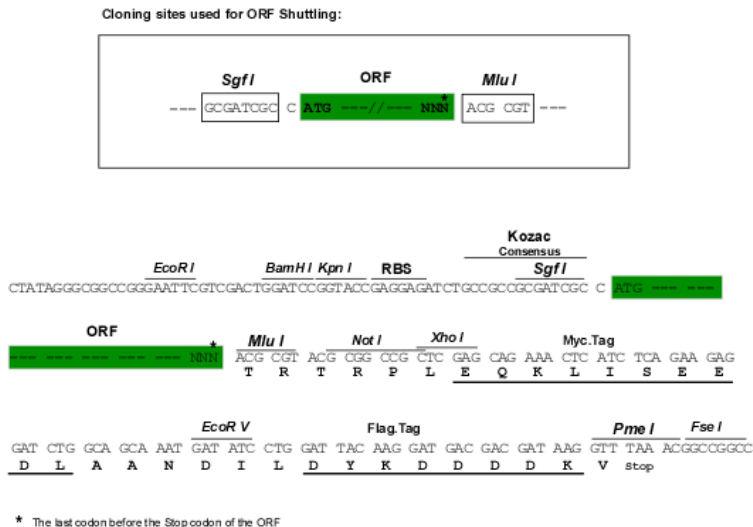


[View online »](#)

Chromatograms: https://cdn.origene.com/chromatograms/mk6543_e01.zip

Restriction Sites: SgfI-MluI

Cloning Scheme:



ACCN: NM_004569

ORF Size: 564 bp

OTI Disclaimer: The molecular sequence of this clone aligns with the gene accession number as a point of reference only. However, individual transcript sequences of the same gene can differ through naturally occurring variations (e.g. polymorphisms), each with its own valid existence. This clone is substantially in agreement with the reference, but a complete review of all prevailing variants is recommended prior to use. [More info](#)

OTI Annotation: This clone was engineered to express the complete ORF with an expression tag. Expression varies depending on the nature of the gene.

Components: The ORF clone is ion-exchange column purified and shipped in a 2D barcoded Matrix tube containing 10ug of transfection-ready, dried plasmid DNA (reconstitute with 100 ul of water).

Reconstitution Method:

1. Centrifuge at 5,000xg for 5min.
2. Carefully open the tube and add 100ul of sterile water to dissolve the DNA.
3. Close the tube and incubate for 10 minutes at room temperature.
4. Briefly vortex the tube and then do a quick spin (less than 5000xg) to concentrate the liquid at the bottom.
5. Store the suspended plasmid at -20°C. The DNA is stable for at least one year from date of shipping when stored at -20°C.

RefSeq: [NM_004569.5](#)

RefSeq Size: 1439 bp

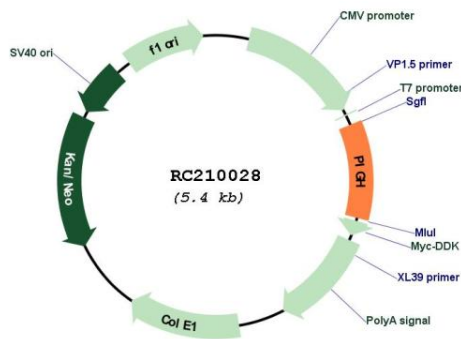
RefSeq ORF: 567 bp

Locus ID: 5283

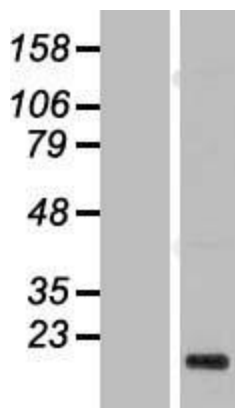
UniProt ID: [Q14442](#)
Cytogenetics: 14q24.1
Protein Families: Transmembrane
Protein Pathways: Glycosylphosphatidylinositol(GPI)-anchor biosynthesis, Metabolic pathways
MW: 21.1 kDa

Gene Summary: This gene encodes an endoplasmic reticulum associated protein that is involved in glycosylphosphatidylinositol (GPI)-anchor biosynthesis. The GPI anchor is a glycolipid found on many blood cells and which serves to anchor proteins to the cell surface. The protein encoded by this gene is a subunit of the GPI N-acetylglucosaminyl (GlcNAc) transferase that transfers GlcNAc to phosphatidylinositol (PI) on the cytoplasmic side of the endoplasmic reticulum. [provided by RefSeq, Jul 2008]

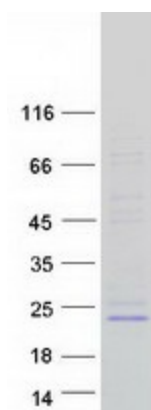
Product images:



Circular map for RC210028



Western blot validation of overexpression lysate (Cat# [LY417898]) using anti-DDK antibody (Cat# [TA50011-100]). Left: Cell lysates from untransfected HEK293T cells; Right: Cell lysates from HEK293T cells transfected with RC210028 using transfection reagent MegaTran 2.0 (Cat# [TT210002]).



Coomassie blue staining of purified PIGH protein (Cat# [TP310028]). The protein was produced from HEK293T cells transfected with PIGH cDNA clone (Cat# RC210028) using MegaTran 2.0 (Cat# [TT210002]).