

Product datasheet for **RC210026**

CCL3 (NM_002983) Human Tagged ORF Clone

Product data:

Product Type: Expression Plasmids
Product Name: CCL3 (NM_002983) Human Tagged ORF Clone
Tag: Myc-DDK
Symbol: CCL3
Synonyms: G0S19-1; LD78ALPHA; MIP-1-alpha; MIP1A; SCYA3
Mammalian Cell Selection: Neomycin
Vector: pCMV6-Entry (PS100001)
E. coli Selection: Kanamycin (25 ug/mL)
ORF Nucleotide Sequence: >RC210026 ORF sequence
Red=Cloning site Blue=ORF Green=Tags(s)

TTTTGTAATACGACTCACTATAGGGCGCCGGGAATTCGTCGACTGGATCCGGTACCGAGGAGATCTGCC
GCC**CGATCGCC**

ATGCAAGTCTCCACTGCTGCCCTTGCTGTCTCTCTGCACCATGGCTCTCTGCAACCAGTTCTCTGCAT
CACTTGTCTGTGACACGCCGACCGCCTGCTGCTTCAGCTACACCTCCCGGAGATTCCACAGAATTCAT
AGCTGACTACTTTGAGACGAGCAGCCAGTGCTCCAAGCCTGGTGTATCTTCTAACCAAGCGAAGCCGG
CAGGTCTGTGCTGACCCAGTGAGGAGTGGTCCAGAAATATGTCAGCGACCTGGAGCTGAGTGCC

ACGCGTACGCGGCCGCTCGAGCAGAAACTCATCTCAGAAGAGGATCTGGCAGCAAATGATATCCTGGATT
ACAAGGATGACGACGATAAGGTTTAA

Protein Sequence: >RC210026 protein sequence
Red=Cloning site Green=Tags(s)
MQVSTAALAVLLCTMALCNQFSASLAADTPTACCFSYTSRQIPQNFIADYFETSSQCSKPGVIFLTKRSR
QVCADPSEEWVQKYVSDLELSA

TRTRPLEQKLISEEDLAANDILDYKDDDDKV

Chromatograms: https://cdn.origene.com/chromatograms/mk6543_d08.zip

Restriction Sites: Sgfl-MluI



[View online »](#)

Cloning Scheme:


ACCN: NM_002983

ORF Size: 276 bp

OTI Disclaimer: Due to the inherent nature of this plasmid, standard methods to replicate additional amounts of DNA in E. coli are highly likely to result in mutations and/or rearrangements. Therefore, OriGene does not guarantee the capability to replicate this plasmid DNA. Additional amounts of DNA can be purchased from OriGene with batch-specific, full-sequence verification at a reduced cost. Please contact our customer care team at custsupport@origene.com or by calling 301.340.3188 option 3 for pricing and delivery.

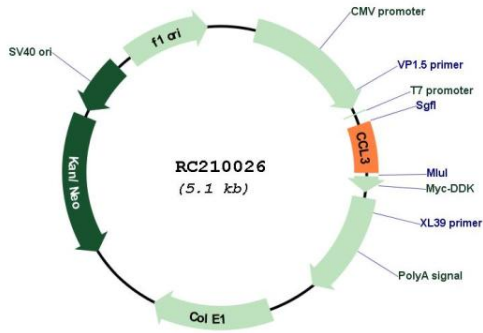
The molecular sequence of this clone aligns with the gene accession number as a point of reference only. However, individual transcript sequences of the same gene can differ through naturally occurring variations (e.g. polymorphisms), each with its own valid existence. This clone is substantially in agreement with the reference, but a complete review of all prevailing variants is recommended prior to use. [More info](#)

OTI Annotation: This clone was engineered to express the complete ORF with an expression tag. Expression varies depending on the nature of the gene.

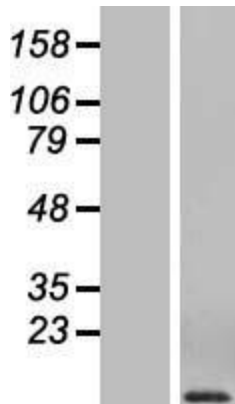
Components: The ORF clone is ion-exchange column purified and shipped in a 2D barcoded Matrix tube containing 10ug of transfection-ready, dried plasmid DNA (reconstitute with 100 ul of water).

Reconstitution Method:	<ol style="list-style-type: none">1. Centrifuge at 5,000xg for 5min.2. Carefully open the tube and add 100ul of sterile water to dissolve the DNA.3. Close the tube and incubate for 10 minutes at room temperature.4. Briefly vortex the tube and then do a quick spin (less than 5000xg) to concentrate the liquid at the bottom.5. Store the suspended plasmid at -20°C. The DNA is stable for at least one year from date of shipping when stored at -20°C.
Note:	Plasmids are not sterile. For experiments where strict sterility is required, filtration with 0.22um filter is required.
RefSeq:	NM_002983.3
RefSeq Size:	813 bp
RefSeq ORF:	279 bp
Locus ID:	6348
UniProt ID:	P10147
Cytogenetics:	17q12
Domains:	IL8
Protein Families:	Druggable Genome, Secreted Protein
Protein Pathways:	Chemokine signaling pathway, Cytokine-cytokine receptor interaction, Toll-like receptor signaling pathway
MW:	10.1 kDa
Gene Summary:	This locus represents a small inducible cytokine. The encoded protein, also known as macrophage inflammatory protein 1 alpha, plays a role in inflammatory responses through binding to the receptors CCR1, CCR4 and CCR5. Polymorphisms at this locus may be associated with both resistance and susceptibility to infection by human immunodeficiency virus type 1.[provided by RefSeq, Sep 2010]

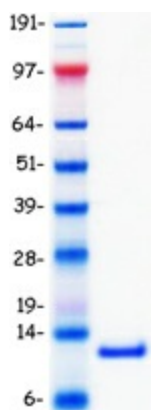
Product images:



Circular map for RC210026



Western blot validation of overexpression lysate (Cat# [LY418970]) using anti-DDK antibody (Cat# [TA50011-100]). Left: Cell lysates from untransfected HEK293T cells; Right: Cell lysates from HEK293T cells transfected with RC210026 using transfection reagent MegaTran 2.0 (Cat# [TT210002]).



Coomassie blue staining of purified CCL3 protein (Cat# [TP310026]). The protein was produced from HEK293T cells transfected with CCL3 cDNA clone (Cat# RC210026) using MegaTran 2.0 (Cat# [TT210002]).