

Product datasheet for **RC210024**

RHEX (NM_001007544) Human Tagged ORF Clone

Product data:

Product Type: Expression Plasmids
Product Name: RHEX (NM_001007544) Human Tagged ORF Clone
Tag: Myc-DDK
Symbol: RHEX
Synonyms: C1orf186
Mammalian Cell Selection: Neomycin
Vector: pCMV6-Entry (PS100001)
E. coli Selection: Kanamycin (25 ug/mL)
ORF Nucleotide Sequence: >RC210024 representing NM_001007544
Red=Cloning site Blue=ORF Green=Tags(s)

TTTTGTAATACGACTCACTATAGGGCGGCCGGAATTCGTCGACTGGATCCGGTACCGAGGAGATCTGCC
GCC**CGGATCGCC**

ATGCTGACAGAAGTCATGGAGGTCTGGCATGGCTTAGTGATCGCGGTGGTGTCCCTCTTCTGCAGGCCCT
GCTTCTCACCGCCATCAACTACCTGCTCAGCAGGCACATGGCCACAAGAGTGAACAGATACTGAAAGC
GGCCAGTCTCCAGGTTCCAGGCCAGCCCTGGCCACCATCATCCACCTGCTGTCAAAGAGATGAAGGAG
ACTCAGACAGAGAGACATCCAATGTCTGATCCCTTTACAGGCATGACAGCGACACACCCTCAGATA
GCTTGGATAGCTCCTGCAGTTCGCTCCTGCCAGGCCACAGAGGATGTGGATTACACACAAGTCGT
CTTTCTGACCCTGGAGAACTAAAAATGACTCCCGCTGGACTATGAGAACATAAAGGAAATCACAGAT
TATGTCAATGTCAATCCAGAAAGACACAAGCCAGTTTCTGGATTTTGTCAACCCTGCTGTCTGAGC
CAGCGGAATATGATCAAGTGGCCATG

ACGCGTACGCGGCCGCTCGAGCAGAACTCATCTCAGAAGAGGATCTGGCAGCAAATGATATCCTGGATT
ACAAGGATGACGACGATAAGGTTTAA

Protein Sequence: >RC210024 representing NM_001007544
Red=Cloning site Green=Tags(s)
MLTEVMEVHGLVIAVVSFLQACFLTAINYLLSRHMAHKSEQILKAASLQVPRPSPGHHHPAVKEMKE
TQTERDIPMSDSLVRHSDTPSDSLDSSCSSPPACQATEDVDYTVVFSDPGELKNDSPLDYENIKEITD
YVNVNPERHKPSFWYFVNPALSEPAEYDQVAM

TRTRPLEQKLISEEDLAANDILDYKDDDDKV

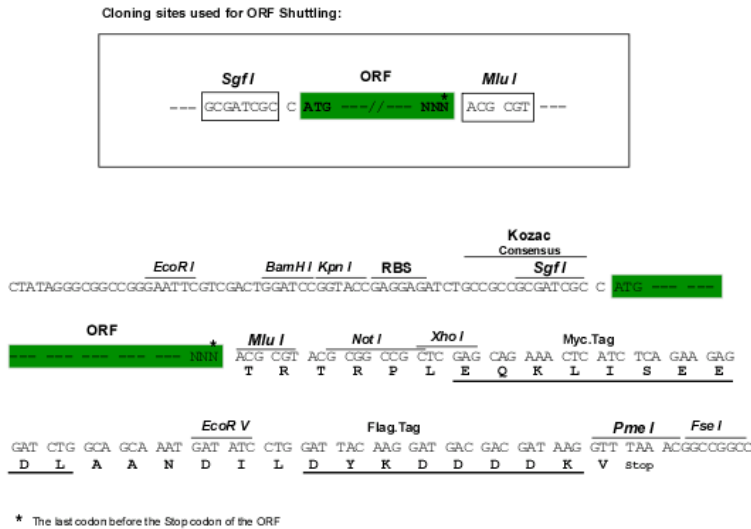
Chromatograms: https://cdn.origene.com/chromatograms/mg2686_e06.zip



[View online »](#)

Restriction Sites: SgfI-MluI

Cloning Scheme:



ACCN: NM_001007544

ORF Size: 516 bp

OTI Disclaimer: The molecular sequence of this clone aligns with the gene accession number as a point of reference only. However, individual transcript sequences of the same gene can differ through naturally occurring variations (e.g. polymorphisms), each with its own valid existence. This clone is substantially in agreement with the reference, but a complete review of all prevailing variants is recommended prior to use. [More info](#)

OTI Annotation: This clone was engineered to express the complete ORF with an expression tag. Expression varies depending on the nature of the gene.

Components: The ORF clone is ion-exchange column purified and shipped in a 2D barcoded Matrix tube containing 10ug of transfection-ready, dried plasmid DNA (reconstitute with 100 ul of water).

Reconstitution Method:

1. Centrifuge at 5,000xg for 5min.
2. Carefully open the tube and add 100ul of sterile water to dissolve the DNA.
3. Close the tube and incubate for 10 minutes at room temperature.
4. Briefly vortex the tube and then do a quick spin (less than 5000xg) to concentrate the liquid at the bottom.
5. Store the suspended plasmid at -20°C. The DNA is stable for at least one year from date of shipping when stored at -20°C.

RefSeq: [NM_001007544.4](#)

RefSeq Size: 1665 bp

RefSeq ORF: 519 bp

Locus ID: 440712

UniProt ID: [Q6ZWK4](#)

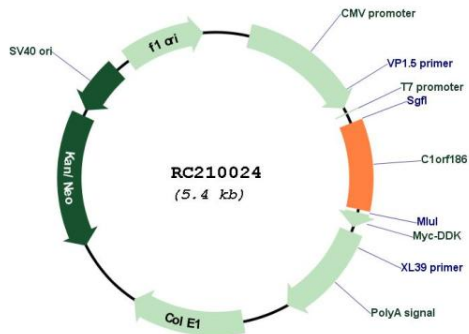
Cytogenetics: 1q32.1

Protein Families: Transmembrane

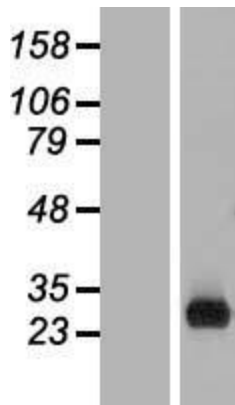
MW: 19.2 kDa

Gene Summary: Acts as a signaling transduction factor of the EPO-EPOR signaling pathway promoting erythroid cell differentiation (PubMed:25092874).[UniProtKB/Swiss-Prot Function]

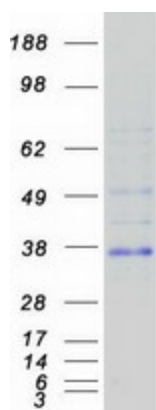
Product images:



Circular map for RC210024



Western blot validation of overexpression lysate (Cat# [LY423507]) using anti-DDK antibody (Cat# [TA50011-100]). Left: Cell lysates from untransfected HEK293T cells; Right: Cell lysates from HEK293T cells transfected with RC210024 using transfection reagent MegaTran 2.0 (Cat# [TT210002]).



Coomassie blue staining of purified RHEX protein (Cat# [TP310024]). The protein was produced from HEK293T cells transfected with RHEX cDNA clone (Cat# RC210024) using MegaTran 2.0 (Cat# [TT210002]).