

Product datasheet for RC210022

PDLIM2 (NM_021630) Human Tagged ORF Clone

Product data:

Product Type:	Expression Plasmids
Product Name:	PDLIM2 (NM_021630) Human Tagged ORF Clone
Tag:	Myc-DDK
Symbol:	PDLIM2
Synonyms:	MYSTIQUE; SLIM
Mammalian Cell Selection:	Neomycin
Vector:	pCMV6-Entry (PS100001)
E. coli Selection:	Kanamycin (25 ug/mL)
ORF Nucleotide Sequence:	>RC210022 ORF sequence Red=Cloning site Blue=ORF Green=Tags(s)

TTTTGTAATACGACTCACTATAGGGCGGCCGGAATTCGTCGACTGGATCCGGTACCGAGGAGATCTGCC
GCC**CGATCGCC**

ATGGCGTTGACGGTGGATGTGGCCGGGCCAGCGCCCTGGGGTTCGGTATCACAGGGGGCAGGGATTTCC
ACACGCCCATCATGGTGACTAAGGTGGCCGAGCGGGCAAAGCCAAGGACGCTGACCTCCGGCCTGGAGA
CATAATCGTGGCCATCAACGGGAAAGCGCGGAGGGCATGCTGCATGCCGAGGCCAGAGCAAGATCCGC
CAGAGCCCCTCGCCCCTGCGGCTGCAGCTGGACCCTCAGGCTACGTCTCCAGGGCAGACCAATGGGG
ACAGCTCCTTGAAGTGTGGCGACTCGCTTCCAGGGCTCCGTGAGGACATACACTGAGAGTCAGTCCTC
CTTAAGGTCTCCTACTCCAGCCCAACCTCCCTCAGCCGAGGGCCGGCAGCCCTTCTCACCACCACC
TCTAGCAGCTCCCTCACTGGAGAGGGCGCCATCAGCCGACGCTTCCAGAGTCTGGCATGTTCCCGGGCC
TCCCGCTGCTGACCGCCTGTCTACTCAGGCCGCCCTGGAAGCCGACAGGCCGGCTCGGCCGCGCTGG
CGACTCGGCGGTGCTGGTGTGCGCCTTCCCGGGCCCTCGTTCCTCCAGGCCAGCATGGACTCGGAA
GGGGGAAGCCTCCTCTGGACGAGGACTCGGAAGTCTTCAAGATGCTGCAGGAAAATCGCGAGGGACGGG
CGGCCCCCGACAGTCCAGCTCCTTTCGGCTCTGCAGGAAGCCCTGGAGGCTGAGGAGAGAGGTGGCAC
GCCAGCCTTCTTGCCAGCTCACTGAGCCCCAGTCTCCTGCCGCTCCAGGGCCCTGGCCACCCTC
CCCAAGCTCCACACTTGTGAGAAGTGCAGTACCAGCATCGGAACCAGGCTGTGCCATCCAGGAGGGCC
GGTACCGCCACCCCGGCTGTACACCTGTGCCGACTGTGGGCTGAACCTGAAGATGCGCGGGCACTTCTG
GGTGGGTGACGAGCTGTACTGTGAGAAGCATGCCCGCCAGCGCTACTCCGCACCTGCCACCCTCAGCTCT
CGGGCC

ACGCGTACGCGGCCGCTCGAGCAGAACTCATCTCAGAAGAGGATCTGGCAGCAAATGATATCCTGGATT
ACAAGGATGACGACGATAAGGTTAA



[View online »](#)

Protein Sequence: >RC210022 protein sequence
Red=Cloning site Green=Tags(s)

MALTVDVAGPAPWGFRTGGDFHTPIIMVTKVAER GKAKDADLRPGDIIVAINGESAEGMLHAEQSKIR
 QSPSPLRLQLDRSQATSPGQTNGDSSLEVLATRFQGSVRTYTESQSSLRSSYSPTSLSPRAGSPFSPPP
 SSSSLTGEAAISRFSQLACSPGLPAADRLSYSGRPGSRQAGLGRAGDSAVLVLPPSPGPRSSRPSMDSE
 GGSLLLDEDESEVFKMLQENREGRAAPRQSSSFRLLEALEAEERGGTPAFLPSSLS PQSSLPASRALATP
 PKLHTCEKCSTSIANQAVRIQEGRYRHPGCYTACDGLNLKMRGHFWGDEL YCEKHARQRY SAPATLSS
 RA

TRTRPLEQKLISEEDLAANDILDYKDDDDKV

Chromatograms: https://cdn.origene.com/chromatograms/mk6248_b11.zip

Restriction Sites: SgfI-MluI

Cloning Scheme:



ACCN: NM_021630

ORF Size: 1056 bp

OTI Disclaimer: The molecular sequence of this clone aligns with the gene accession number as a point of reference only. However, individual transcript sequences of the same gene can differ through naturally occurring variations (e.g. polymorphisms), each with its own valid existence. This clone is substantially in agreement with the reference, but a complete review of all prevailing variants is recommended prior to use. [More info](#)

OTI Annotation: This clone was engineered to express the complete ORF with an expression tag. Expression varies depending on the nature of the gene.

Components: The ORF clone is ion-exchange column purified and shipped in a 2D barcoded Matrix tube containing 10ug of transfection-ready, dried plasmid DNA (reconstitute with 100 ul of water).

Reconstitution Method:

1. Centrifuge at 5,000xg for 5min.
2. Carefully open the tube and add 100ul of sterile water to dissolve the DNA.
3. Close the tube and incubate for 10 minutes at room temperature.
4. Briefly vortex the tube and then do a quick spin (less than 5000xg) to concentrate the liquid at the bottom.
5. Store the suspended plasmid at -20°C. The DNA is stable for at least one year from date of shipping when stored at -20°C.

RefSeq: [NM_021630.2](#)

RefSeq Size: 2246 bp

RefSeq ORF: 1809 bp

Locus ID: 64236

UniProt ID: [Q96JY6](#)

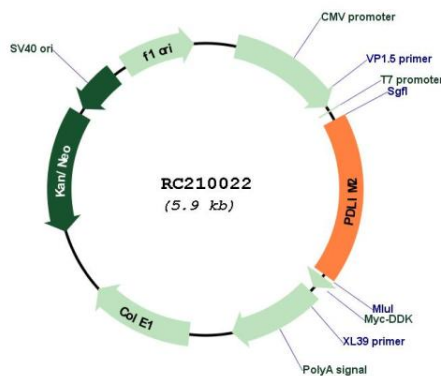
Cytogenetics: 8p21.3

Domains: PDZ, LIM

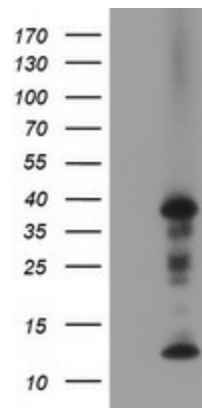
MW: 37.5 kDa

Gene Summary: This gene encodes a member of the ALP subfamily of PDZ-LIM domain proteins. The encoded protein suppresses anchorage-dependent growth and promotes cell migration and adhesion through interactions with the actin cytoskeleton via the PDZ domain. The encoded protein is also a putative tumor suppressor protein, and decreased expression of this gene is associated with several malignancies including breast cancer and adult T-cell leukemia. Alternatively spliced transcript variants encoding multiple isoforms have been observed for this gene. [provided by RefSeq, Oct 2011]

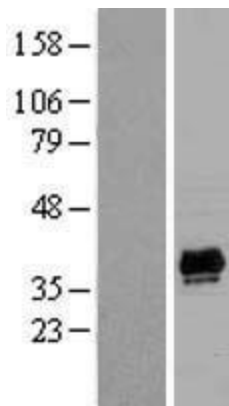
Product images:



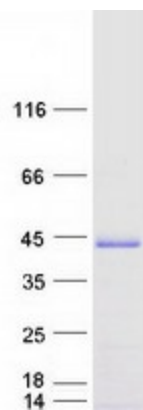
Circular map for RC210022



HEK293T cells were transfected with the pCMV6-ENTRY control (Cat# [PS100001], Left lane) or pCMV6-ENTRY PDLIM2 (Cat# RC210022, Right lane) cDNA for 48 hrs and lysed. Equivalent amounts of cell lysates (5 ug per lane) were separated by SDS-PAGE and immunoblotted with anti-PDLIM2(Cat# [TA502708]). Positive lysates [LY411957] (100ug) and [LC411957] (20ug) can be purchased separately from OriGene.



Western blot validation of overexpression lysate (Cat# [LY411957]) using anti-DDK antibody (Cat# [TA50011-100]). Left: Cell lysates from untransfected HEK293T cells; Right: Cell lysates from HEK293T cells transfected with RC210022 using transfection reagent MegaTran 2.0 (Cat# [TT210002]).



Coomassie blue staining of purified PDLIM2 protein (Cat# [TP310022]). The protein was produced from HEK293T cells transfected with PDLIM2 cDNA clone (Cat# RC210022) using MegaTran 2.0 (Cat# [TT210002]).