

Product datasheet for RC210019

PON3 (NM_000940) Human Tagged ORF Clone

Product data:

Product Type:	Expression Plasmids
Product Name:	PON3 (NM_000940) Human Tagged ORF Clone
Tag:	Myc-DDK
Symbol:	PON3
Mammalian Cell Selection:	Neomycin
Vector:	pCMV6-Entry (PS100001)
E. coli Selection:	Kanamycin (25 ug/mL)
ORF Nucleotide Sequence:	>RC210019 ORF sequence Red=Cloning site Blue=ORF Green=Tags(s)

TTTTGTAATACGACTCACTATAGGGCGGCCGGAATTCGTCGACTGGATCCGGTACCGAGGAGATCTGCCGCCGCGATCGCC

ATGGGGAAGCTCGTGGCGCTGGTCCTGCTGGGGTTCGGCCTGTCCTTAGTCGGGGAGATGTTCTGGCGT
TTAGAGAAAGGGTGAATGCCTCTCGAGAAGTGGAGCCAGTAGAACCTGAAAACCTGCCACCTATTGAGGA
ACTTAAAAATGGCTCTGAAGATATTGATATACTTCCTAGTGGGCTGGCTTTTATCTCCAGTGGATAAAA
TATCCAGGCATGCCAACTTTGCGCCAGATGAACCAGGAAAAATCTTCTTGATGGATCTGAATGAACAAA
ACCCAAGGGCACAAGCACTAGAAAATCAGTGGTGGATTTGACAAAAGAAATTTAAATCCACATGGGATCAG
TATTTTTCATCGACAAAGACAATACTGTGTATCTTTATGTTGTGAATCATCCCCACATGAAGTCCACTGTG
GAGATATTTAAATTTGAGGAACAACAACGTTCTCTGGTATACCTGAAAACATAAAAACATGAACTTCTCA
AAAGTGTGAATGACATTGTGGTTCTGGACCAGAACAGTTCTATGCCACCAGAGACCACTATTTTACCAA
CTCCCTCTGTCAATTTTGGAGATGATCTGGATCTTCGCTGGACTTATGTTCTTTTCTACAGCCCAAGG
GAGGTTAAAGTGGTGGCCAAAGGATTTTGTAGTGCCAATGGGATCACAGTCTCAGCAGACCAGAAGTATG
TCTATGTAGCTGATGTAGCAGCTAAGAATTACATAATGGAAAACATGATACTGGGATTTAACTCA
ACTGAAGGTGATACAGTTGGGCACCTTAGTGGATAACCTGACTGTCGATCCTGCCACAGGAGACATTTT
GCAGGATGCCATCCTAATCCTATGAAGCTACTGAACTATAACCCTGAGGACCCTCCAGGATCAGAAGTAC
TTCGCATCCAGAATGTTTTGTCTGAGAAGCCAGGGTGAGCACCGTGTATGCCAACAAATGGCTCTGTGCT
TCAGGGCACCTCTGTGGCTTCTGTGTACCATGGGAAAATTCATAGGCACCGTATTTACAAAACTCTG
TACTGTGAGCTC

ACGCGTACGCGGCCGCTCGAGCAGAAAACCTCATCTCAGAAGAGGATCTGGCAGCAAATGATATCCTGGATT
ACAAGGATGACGACGATAAGGTTTAA



[View online »](#)

Protein Sequence: >RC210019 protein sequence
Red=Cloning site Green=Tags(s)

MGKLVALLVLLGVGLSLVGEMFLAFRRVNASREVEPVPEPENCHLIEELENSEIDILPISGLAFISSGLK
 YPGMPNFAPDEPGKIFLMDLNEQNPRQALEISGGFDKELFNPHGISIFIDKDNTVYLYVNVNHPMKSTV
 EIFKFEEQQRSLVYLKTIKHELLKSVNDIVVLGPEQFYATRDRHYFTNSLLSFFEMILDLRWYVLFYSPR
 EVKVVAKGFC SANGITVSADQKYVYVADVAAKNIHIMEKHNDWDLTQLKVIQLGLTLDNLTVDPATGDIL
 AGCHPNPMKLLNYPEDPPGSEVLRIQNVLSEKPRVSTVYANNGSVLQGTSVASVYHGKILIGTVFHKTL
 YCEL

TRTRPLEQKLISEEDLAANDILDYKDDDDKV

Chromatograms: https://cdn.origene.com/chromatograms/mk6178_a01.zip

Restriction Sites: Sgfl-MluI

Cloning Scheme:

Cloning sites used for ORF Shuttling:



* The last codon before the Stop codon of the ORF

ACCN: NM_000940

ORF Size: 1062 bp

OTI Disclaimer: The molecular sequence of this clone aligns with the gene accession number as a point of reference only. However, individual transcript sequences of the same gene can differ through naturally occurring variations (e.g. polymorphisms), each with its own valid existence. This clone is substantially in agreement with the reference, but a complete review of all prevailing variants is recommended prior to use. [More info](#)

OTI Annotation: This clone was engineered to express the complete ORF with an expression tag. Expression varies depending on the nature of the gene.

Components: The ORF clone is ion-exchange column purified and shipped in a 2D barcoded Matrix tube containing 10ug of transfection-ready, dried plasmid DNA (reconstitute with 100 ul of water).

Reconstitution Method:

1. Centrifuge at 5,000xg for 5min.
2. Carefully open the tube and add 100ul of sterile water to dissolve the DNA.
3. Close the tube and incubate for 10 minutes at room temperature.
4. Briefly vortex the tube and then do a quick spin (less than 5000xg) to concentrate the liquid at the bottom.
5. Store the suspended plasmid at -20°C. The DNA is stable for at least one year from date of shipping when stored at -20°C.

RefSeq: [NM_000940.3](#)

RefSeq Size: 1201 bp

RefSeq ORF: 1065 bp

Locus ID: 5446

UniProt ID: [Q15166](#)

Cytogenetics: 7q21.3

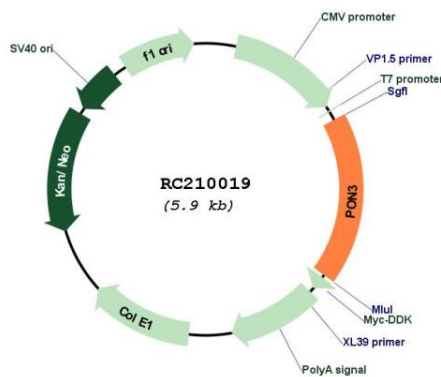
Protein Families: Secreted Protein, Transmembrane

Protein Pathways: Metabolic pathways

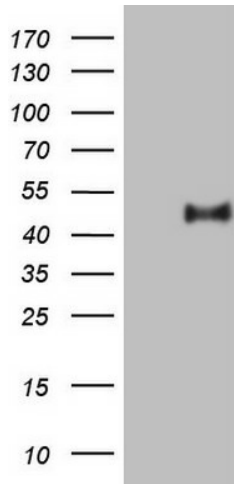
MW: 39.6 kDa

Gene Summary: This gene is a member of the paraoxonase family and lies in a cluster on chromosome 7 with the other two family members. The encoded protein is secreted into the bloodstream and associates with high-density lipoprotein (HDL). The protein also rapidly hydrolyzes lactones and can inhibit the oxidation of low-density lipoprotein (LDL), a function that is believed to slow the initiation and progression of atherosclerosis. Alternatively spliced variants which encode different protein isoforms have been described; however, only one has been fully characterized. [provided by RefSeq, Jul 2008]

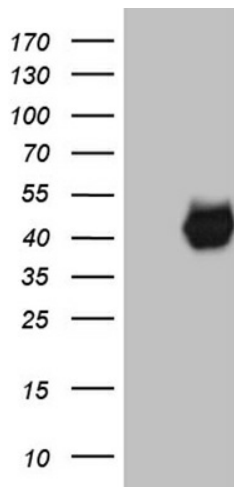
Product images:



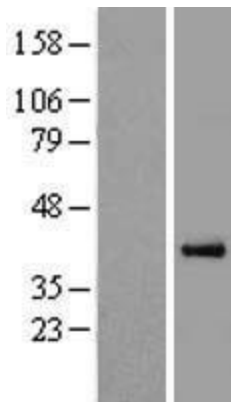
Circular map for RC210019



HEK293T cells were transfected with the pCMV6-ENTRY control (Left lane) or pCMV6-ENTRY PON3 (RC210019, Right lane) cDNA for 48 hrs and lysed. Equivalent amounts of cell lysates (5 ug per lane) were separated by SDS-PAGE and immunoblotted with anti-PON3 (TA807381). Positive lysates [LY400339] (100ug) and [LC400339] (20ug) can be purchased separately from OriGene.



HEK293T cells were transfected with the pCMV6-ENTRY control (Cat# [PS100001], Left lane) or pCMV6-ENTRY PON3 (Cat# RC210019, Right lane) cDNA for 48 hrs and lysed. Equivalent amounts of cell lysates (5 ug per lane) were separated by SDS-PAGE and immunoblotted with anti-PON3 (Cat# [TA807382])(1:2000). Positive lysates [LY400339] (100ug) and [LC400339] (20ug) can be purchased separately from OriGene.



Western blot validation of overexpression lysate (Cat# [LY400339]) using anti-DDK antibody (Cat# [TA50011-100]). Left: Cell lysates from untransfected HEK293T cells; Right: Cell lysates from HEK293T cells transfected with RC210019 using transfection reagent MegaTran 2.0 (Cat# [TT210002]).