

## Product datasheet for **RC210015**

### **DIPK1A (NM\_001006605) Human Tagged ORF Clone**

#### **Product data:**

Product Type:	Expression Plasmids
Product Name:	DIPK1A (NM_001006605) Human Tagged ORF Clone
Tag:	Myc-DDK
Symbol:	DIPK1A
Synonyms:	FAM69A
Mammalian Cell Selection:	Neomycin
Vector:	pCMV6-Entry (PS100001)
E. coli Selection:	Kanamycin (25 ug/mL)



[View online »](#)

**ORF Nucleotide Sequence:**

>RC210015 representing NM\_001006605  
 Red=Cloning site Blue=ORF Green=Tags(s)

TTTTGTAATACGACTCACTATAGGGCGGCCGGAATTCGTCGACTGGATCCGGTACCGAGGAGATCTGCC  
 GCC**CGGATCGCC**

ATGGCGAGGAGTCTCTGTCCGGGGCTGGCTAAGGAAACCCATTACCTCCAGGCTCGCTTCTCATATG  
 TCGGATGAAATATCTTTCTTTCTGTTAGTGGTTTTTGTGGAAGCTGGATTATATATGTGCAGTA  
 TTCTACCTATACAGAATTATGCAGAGGAAAGGACTGTAAGAAAATAATATGTGACAAGTACAAGACTGGA  
 GTTATTGATGGCCTGCATGTAACAGCCTTTGTGTACAGAACTCTTTACTTTGGAAAATGTTTATCCA  
 CCAAGCCCAACAATCAGATGATTTAGGGATTTGGGATAATCTACCAGGTGTTGTGAAATGTCAAATGGA  
 ACAAGCGCTTCATCTTGATTTTGAAGTGAATTGGAACCAAGAAAAGAAATAGTGCTATTTGATAAGCCA  
 ACTAGAGGAACTACTGTACAAAAATTTAAGAAATGGTCTATAGTCTCTTAAGGCAAAATTTGGGTGACC  
 AAGGAAACCTCTCTGAAGTGGTAAATCTCATCTTGACGGTGGCTGATGGAGACAAAGATGCCAGGTTTC  
 CTTGGGAGAAGCAAAGTCGGCATGGCACTTCTCAACTGAATGAATTTCTTCTCATGGTGATACTTCAA  
 GATAAAGAACATACCCCAAAATTAATGGGATTCTGTGGTACCTCTATGTGATGGAAGTGTGAATATA  
 CCTCTCTTTATGGAATAAGCCTTCTTGGGTCATTGAACTTTTTATTCCATCTGGGTTCCAGAAGAAGCAT  
 GGATCAGCTGTTACACCATCATGGCCAAGAAAGGCCAAAATAGCCATAGGACTTCTAGAATTTGTGGAA  
 GATGTTTTCCATGGCCCTACGGAATTTCTCATGTGCGATACTAGTGCACAAAACCTAGGATATAATG  
 ATAAGTATGATTTGAAAATGGTGGATATGAGAAAAATTGTGCCAGAGACAAACCTGAAAGAAGCTTATTA  
 GGATCGTCACTGTGAGTCTGATTTGGACTGTGTCTATGGCACAGATTGTAGAAGTACTGTGATCAGAGT  
 ACAATGAAGTGTACTTCAGAAGTATACAACAAACTTGGCAAAAGCTTGTGAGTACTCAAAGACTACC  
 TACTGCGTGGTCTCAAGTGAATTCGTGAAGAATTAGAAAAGCAGCTTTATTCTGTATTGCTCTCAA  
 AGTCACAGCAAAATCAAATGGAAATGGAACATTTCTTGTACTAAATAACCTAAAAACATTATTGTGGAAG  
 AAAATTTCTACTAATAAGTACTCT

**ACGCGT**ACGCGGCCGCTCGAGCAGAACTCATCTCAGAAGAGGATCTGGCAGCAATGATATCCTGGATT  
 ACAAGGATGACGACGATAAGGTTTAA

**Protein Sequence:**

>RC210015 representing NM\_001006605  
 Red=Cloning site Green=Tags(s)

MARSLCPGAWLRKPYLQARFSYVRMKYLFFSWLVFVGSWIIYVQYSTYTELCRQKDKKIIICDKYKTG  
 VIDGPACNSLCVTETLYFGKCLSTKPNNQMYLGIWDNLPGVVQCMEQALHLDGTELEPRKEIVLFDKP  
 TRGTTVQKFKEMVYSLFKAKLGDQGNLSELVNLILTVADGDKDQVSLGEAKSAWALLQLNEFLLMVILQ  
 DKEHTPKLMGFCDLYVMESVEYTSLYGISLPWVIELFIPSGFRRSMDQLFTPSWPRKAKIAIGLLEFVE  
 DVFHGPGYGNFLMCDTSAKNLGYNDKYDLKMVDMRKIVPETNLKELIKDRHCESDLDCVYGTDCRTSCDQS  
 TMKCTSEVIQPNLAKACQLLDYLLRGAPSEIREELEKQLYSCIALKVTANQMEMEHSILNNLKTLWLK  
 KISYTNDS

**TR**TRPLEQKLISEEDLAANDILDYKDDDDKV

**Chromatograms:**

[https://cdn.origene.com/chromatograms/mk8121\\_a01.zip](https://cdn.origene.com/chromatograms/mk8121_a01.zip)

**Restriction Sites:**

Sgfl-Mlul

**Cloning Scheme:**

**ACCN:** NM\_001006605

**ORF Size:** 1284 bp

**OTI Disclaimer:** Due to the inherent nature of this plasmid, standard methods to replicate additional amounts of DNA in E. coli are highly likely to result in mutations and/or rearrangements. Therefore, OriGene does not guarantee the capability to replicate this plasmid DNA. Additional amounts of DNA can be purchased from OriGene with batch-specific, full-sequence verification at a reduced cost. Please contact our customer care team at [custsupport@origene.com](mailto:custsupport@origene.com) or by calling 301.340.3188 option 3 for pricing and delivery.

The molecular sequence of this clone aligns with the gene accession number as a point of reference only. However, individual transcript sequences of the same gene can differ through naturally occurring variations (e.g. polymorphisms), each with its own valid existence. This clone is substantially in agreement with the reference, but a complete review of all prevailing variants is recommended prior to use. [More info](#)

**OTI Annotation:** This clone was engineered to express the complete ORF with an expression tag. Expression varies depending on the nature of the gene.

**Components:** The ORF clone is ion-exchange column purified and shipped in a 2D barcoded Matrix tube containing 10ug of transfection-ready, dried plasmid DNA (reconstitute with 100 ul of water).

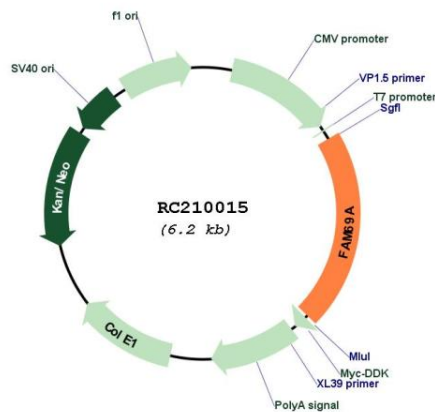
- Reconstitution Method:**
1. Centrifuge at 5,000xg for 5min.
  2. Carefully open the tube and add 100ul of sterile water to dissolve the DNA.
  3. Close the tube and incubate for 10 minutes at room temperature.
  4. Briefly vortex the tube and then do a quick spin (less than 5000xg) to concentrate the liquid at the bottom.
  5. Store the suspended plasmid at -20°C. The DNA is stable for at least one year from date of shipping when stored at -20°C.

**RefSeq:** [NM\\_001006605.5](#)

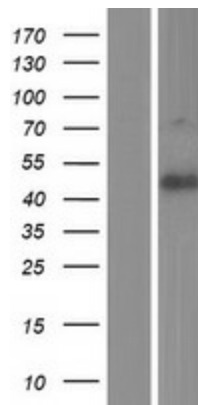
RefSeq Size: 2603 bp  
 RefSeq ORF: 1287 bp  
 Locus ID: 388650  
 UniProt ID: [Q5T7M9](#)  
 Cytogenetics: 1p22.1  
 Protein Families: Transmembrane  
 MW: 49.5 kDa

**Gene Summary:** This gene encodes a member of the FAM69 family of cysteine-rich type II transmembrane proteins. These proteins localize to the endoplasmic reticulum but their specific functions are unknown. Alternatively spliced transcript variants encoding multiple isoforms have been observed for this gene. [provided by RefSeq, Nov 2011]

### Product images:



Circular map for RC210015



Western blot validation of overexpression lysate (Cat# [LY423684]) using anti-DDK antibody (Cat# [TA50011-100]). Left: Cell lysates from untransfected HEK293T cells; Right: Cell lysates from HEK293T cells transfected with RC210015 using transfection reagent MegaTran 2.0 (Cat# [TT210002]).