

Product datasheet for **RC210008**

CCL4L1 (NM_207007) Human Tagged ORF Clone

Product data:

Product Type:	Expression Plasmids
Product Name:	CCL4L1 (NM_207007) Human Tagged ORF Clone
Tag:	Myc-DDK
Symbol:	CCL4L1
Synonyms:	AT744.2; CCL4L; LAG-1; LAG1; MIP-1-beta; SCYA4L; SCYA4L1; SCYA4L2
Mammalian Cell Selection:	Neomycin
Vector:	pCMV6-Entry (PS100001)
E. coli Selection:	Kanamycin (25 ug/mL)
ORF Nucleotide Sequence:	>RC210008 representing NM_207007 Red=Cloning site Blue=ORF Green=Tags(s) TTTTGTAATACGACTCACTATAGGGCGGCCGGAATTCGTCGACTGGATCCGGTACCGAGGAGATCTGCCGCC CGATCGCC ATGAAGCTCTGCGTGACTGTCCTGTCTCTCCTCGTGCTAGTAGCTGCCTTCTGCTCTCTAGCACTCTCAGACCAATGGGCTCAGACCCTCCACCGCTGCTGCTTTTCTTACACCGCGAGGAAGCTTCTCGCAACTTGTGGTAGATTACTATGAGACCAGCAGCCTCTGCTCCAGCCAGCTGTGGTATTCCAACAAAAGAGGCCAAGCAAGTCTGCGCTGACCCAGTGAGTCTGGGTCCAGGAGTACGTGTATGACCTGGAAGTGAAC ACGCGT ACGCGGCCGCTCGAGCAGAAACTCATCTCAGAAGAGGATCTGGCAGCAAATGATATCCTGGATTACAAGGATGACGACGATAAGGTTTAA
Protein Sequence:	>RC210008 representing NM_207007 Red=Cloning site Green=Tags(s) MKLCVTVLSLLVLVAAFCSLALSAPMGSDPPTACCFSYTARKLPRNFVVDYYETSSLCSQPAVVFQTKRGKQVCADPSESQWQYVYDLELN TRTRPLEQKLI SEEDLAANDILDYKDDDDKV
Chromatograms:	https://cdn.origene.com/chromatograms/mk8100_h08.zip
Restriction Sites:	Sgfl-MluI



[View online »](#)

Cloning Scheme:


ACCN: NM_207007

ORF Size: 276 bp

OTI Disclaimer: The molecular sequence of this clone aligns with the gene accession number as a point of reference only. However, individual transcript sequences of the same gene can differ through naturally occurring variations (e.g. polymorphisms), each with its own valid existence. This clone is substantially in agreement with the reference, but a complete review of all prevailing variants is recommended prior to use. [More info](#)

OTI Annotation: This clone was engineered to express the complete ORF with an expression tag. Expression varies depending on the nature of the gene.

Components: The ORF clone is ion-exchange column purified and shipped in a 2D barcoded Matrix tube containing 10ug of transfection-ready, dried plasmid DNA (reconstitute with 100 ul of water).

- Reconstitution Method:**
1. Centrifuge at 5,000xg for 5min.
 2. Carefully open the tube and add 100ul of sterile water to dissolve the DNA.
 3. Close the tube and incubate for 10 minutes at room temperature.
 4. Briefly vortex the tube and then do a quick spin (less than 5000xg) to concentrate the liquid at the bottom.
 5. Store the suspended plasmid at -20°C. The DNA is stable for at least one year from date of shipping when stored at -20°C.

RefSeq: [NM_207007.3](#)

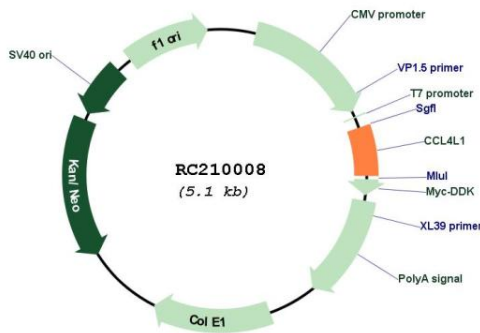
RefSeq Size: 685 bp

RefSeq ORF: 279 bp

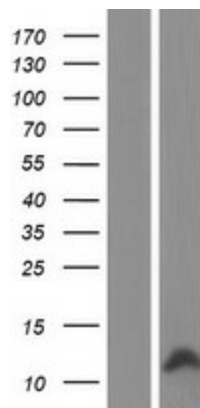
Locus ID: 388372

UniProt ID: [P13236](#)
Cytogenetics: 17q12
Protein Families: Druggable Genome, Transmembrane
Protein Pathways: Chemokine signaling pathway, Cytokine-cytokine receptor interaction, Cytosolic DNA-sensing pathway
MW: 10.2 kDa
Gene Summary: This gene is one of several cytokine genes that are clustered on the q-arm of chromosome 17. Cytokines are a family of secreted proteins that function in inflammatory and immunoregulatory processes. The protein encoded by this family member is similar to the chemokine (C-C motif) ligand 4 product, which inhibits HIV entry by binding to the cellular receptor CCR5. The copy number of this gene varies among individuals, where most individuals have one to five copies. Alternative splicing of this gene results in multiple transcript variants. [provided by RefSeq, Apr 2014]

Product images:



Circular map for RC210008



Western blot validation of overexpression lysate (Cat# [LY404131]) using anti-DDK antibody (Cat# [TA50011-100]). Left: Cell lysates from untransfected HEK293T cells; Right: Cell lysates from HEK293T cells transfected with RC210008 using transfection reagent MegaTran 2.0 (Cat# [TT210002]).