

Product datasheet for **RC210005**

AGL (NM_000642) Human Tagged ORF Clone

Product data:

Product Type:	Expression Plasmids
Product Name:	AGL (NM_000642) Human Tagged ORF Clone
Tag:	Myc-DDK
Symbol:	AGL
Synonyms:	GDE
Mammalian Cell Selection:	Neomycin
Vector:	pCMV6-Entry (PS100001)
E. coli Selection:	Kanamycin (25 ug/mL)
ORF Nucleotide Sequence:	>RC210005 representing NM_000642 Red=Cloning site Blue=ORF Green=Tags(s)

TTTTGTAATACGACTCACTATAGGGCGGCCGGAATTCGTCGACTGGATCCGGTACCGAGGAGATCTGCC
GCC**CGATCGCC**

ATGGGACACAGTAAACAGATTCTGAATTTACTTCTGAACGAAATGGAGAACTGGAAAAGACCCTTTCA
GACTTGAACAAGGGTATGAGCTACAGTCCGATTAGGCCCACTTTACAGGAAAAGCAGTTACCGTGTA
TACAAATTACCCATTTCTGGAGAAACATTTAATAGAGAAAAATCCGTTCTCTGGATTGGGAAAATCCA
ACAGAAAGAGAAGATGATTCTGATAAATACTGAACTTAATCTGCAACAATCTGGTTCATTTAGTATT
ATTTCTTCAAGGAAATGAGAAAAGTGGTGGAGTTACATAGTTGTGGACCCATTTTACGTGTTGGTGC
TGATAATCATGTGCTACCCTGGACTGTGTTACTTTCAGACATTTTAGCTAAGTGTGGGACCTTTT
GATGAATGGGAAAGCAGACTTAGGGTTGCAAAAAGAAATCAGGCTACAACATGATTCATTTTACCCATTGC
AGACTCTTGGACTATCTAGGTGCTGCTACTCCCTTGCCAAATCAGTTAGAATTAATCCTGACTTTTCAAG
ACCTAATAGAAAGTATACCTGGAATGATGTTGGACAGCTAGTGGAAAAATTAATAAGGAATGGAATGTT
ATTTGTATTACTGATGTTGTCTACAATCATACTGCTGCTAATAGTAAATGGATCCAGGAACATCCAGAA
GTGCTATAATCTGTGAATCTCCACACTTAAACCTGCCTGGGTCTTAGACAGAGCAGCTTTGGCGTTT
CTCCTGTGATGTTGCAGAAGGAAATACAAAGAAAAGGAATACCTGCTTTGATTGAAAATGATCACCAT
ATGAATTCATCCGAAAATAATTTGGGAGGATATTTTCCAAAGCTTAACTCTGGGAATTTTCCAAAG
TAGATGTCAACAAAGCGTTGAGCAATTTAGAAGACTTCTTACACAAGAAAATAGGCGAGTAACCAAGTC
TGATCCAAACCAACACCTTACGATTATTCAAGATCCTGAATACAGACGGTTTGGCTGTACTGTAGATATG
AACATTGCACTAACGACTTTTATACCACATGACAAGGGGCCAGCAGCAATTGAAGAATGCTGTAATGGT
TTCATAAAGAATGGAGGAATTAATTCAGAGAAGCATCGACTCATTAATATCATCAGGAACAGGCAGT
TAATTGCCTTTTGGGAAATGTGTTTTATGAACGACTGGCTGGCCATGGTCCAAAAGTGGACCTGCTACT
AGAAAGCATCCTTTAGTTACCAGGATTTTACTTTCCATTTGAAGAGATAGACTTCTCCATGGAAGAAT
CTATGATTCATCTGCCAAATAAAGCTTGTCTGATGGCACACAATGGATGGGTAAATGGGAGATGATCC
TCTTCAAACCTTCTGTAACCGGTTTCAAGTTTACCTAAGGAGAGAATTTTCTGCTGGGAGACAGT



[View online »](#)

GTAAATTACGCTATGGGAATAAACAGAGGACTGTCCTTATCTCTGGGCACACATGAAAAATACACTG
AAATAACTGCACTTATTTCCAGGGAGTACGTCTTGATAACTGCCACTCAACACCTCTTCACGTAGCTGA
GTACATGTTGGATGCTGCTAGGAATTTGCAACCAATTTATATGTAGTAGCTGAAGTGTTCACAGGAAGT
GAAGATCTGGACAATGCTTTGTTACTAGACTGGGCATTAGTTCCTTAATAAGAGAGGCAATGAGTGCAT
ATAATAGTCATGAAGAGGGCAGATTAGTTTACCAGATATGGAGGAGAACCTGTTGGATCCTTTGTTACGCC
CTGTTTGGAGCCTTTAAATGCCAGCTATTGCACATGCCCTGTTTATGGATATTACGCATGATAATGAGTGT
CCTATTGTGCATAGATCAGCGTATGATGCTCTTCCAAGTACTACAATTGTTTCTATGGCATGTTGTGCTA
GTGGAAGTACAAGAGGCTATGATGAATTAGTGCCCTCATCAGATTTCAAGTGGTTTCTGAAGAACGGTTTTA
CACTAAGTGAATCCTGAAGCATTGCCCTCAAACACAGGTGAAGTTAATTTCAAAGCGGCATTATTGCA
GCCAGGTGTGCTATCAGTAACTTCATCAGGAGCTTGGAGCCAAGGGTTTTATTACAGGTGTATGTGGATC
AAGTTGATGAAGACATAGTGGCAGTAACAAGACACTCACCTAGCATCCATCAGTCTGTTGTGGCTGTATC
TAGAACTGCTTTCAGGAATCCCAAGACTTCATTTTACAGCAAGGAAGTGCCTCAAATGTGCATCCCTGGC
AAAATTGAAGAAGTAGTCTTGAAGCTAGAATTTGAGAGAAACACGAAACCTTATAGGAAGGATGAGA
ATTCATCAATGGAACACCAGATATCACAGTAGAAATAGAGAACATATTCAGCTTAATGAAAGTAAAT
TGTTAAACAAGCTGGAGTTGCCACAAAAGGGCCCAATGAATATATTCAAGAAATAGAATTTGAAAACCTG
TCTCCAGGAAGTGTATTATATTAGAGTTAGTCTTGATCCACATGCACAAGTCCGCTGTTGGAATCTTC
GAAATCATCTGACACAATTCAGTCCCTCACTTTAAATCTGGCAGCCTAGCTGTTGACAATGCAGATCCAT
ATTAATAATCCTTTTGCTTCTCTTGCCTCCAGATTAACCTTTGGCTGAGCTAAATCAGATCCTTTACCGA
TGTGAATCAGAAGAAAAGGAAGATGGTGGAGGGTGTATGACATACCAAACCTGGTCCAGCCCTTAAATATG
CAGGCTTCAAGGTTTAAATGCTGTATTGGCAGAAATAAGACCAAAGAATGACTTGGGGCATCCTTTTTG
TAATAATTTGAGATCTGGAGATTGGATGATTGACTATGTCAGTAAACCGGCTTATTCACGATCAGGAAT
ATTGCTGAAGTTGGTAAATGGTGCAGGCTATGTTCTTACCTGAAGCAGATCCCACGTTACCTTATCC
CATGTTACTTTGATGCTATATTAATTTGGTGCATATACCCTCTTCTGGATACAGCATGGAAGCAGATGTC
AAGCTTTGTTTCAAGTGGTTCAACCTTTGTGAAACACCTTTTATTGGGTTCAAGTCAACTGTGTGGAGTA
GGAAAATTCCTTCCCTGCCAATCTTTTACCTGCCCTAATGGATGTACCTTATAGGTTAAATGAGATCA
CAAAAGAAAAGGAGCAATGTTGTGTTTCTCTAGCTGCAGGCTTACCTCATTTTTCTTCTGGTATTTTCCG
CTGCTGGGAAGGGATACTTTTATTGCACTTAGAGGTACTGCTGATTACTGGACGCTATGTAGAAGCC
AGGAATATTTTAGCATTGCGGGTACCCTGAGGCATGGTCTCATTCTAATCTACTGGGTGAAGGAA
TTTATGCCAGATACAATGTCGGGATGCTGTGTGGTGGTGGCTGCAGTGTATCCAGGATTACTGTAAAT
GGTTCAAATGGTCTAGACATTTCAAGTGCCAGTTCCAGAATGTATCCTACAGATGATTCTGCTCCT
TTGCCCTGCTGGCACACTGGATCAGCCATTGTTTGAAGTCATACAGGAAGCAATGCAAAAACACATGCAGG
GCATACAGTTCCGAGAAAAGGAATGCTGGTCCCCAGATAGATCGAAACATGAAGGACGAAGGTTTTAATAT
AACTGCAGGAGTTGATGAAGAAAACAGGATTTGTTTATGGAGGAAATCGTTTCAATTGTGGCACATGGATG
GATAAAATGGGAGAAAAGTACAGAGCTAGAAAACAGAGGAATCCCAGCCACACCAAGAGATGGGTCTGCTG
TGGAAATGTGGGCTGAGTAAATCTGCTGTTGCTGGTGTGCTGGAATTAACAAAAAATATTTTCCC
TTATCATGAAGTCACAGTAAAAAGACATGGAAAGGCTATAAAGGTCTCATATGATGAGTGGAACAGAAAA
ATACAAGACAACCTTTGAAAAGCTATTTTCAATGTTTCCGAAGACCCTTCAAGTTTAAATGAAAAGCATCCAA
ATCTGGTTCACAAACGTGGCATAACAAGATAGTTATGGAGCTTCAAGTCCCTGGTGTGACTATCAGCT
CAGGCCTAATTTTACCATAGCAATGGTTGTGCCCTGAGCTTTTACTACAGAAAAGCATGGAAGCT
TTGGAGATTGCAGAAAAAAATGCTTGGTCCCCTTGGCATGAAAACCTTATAGTCCAGATGATATGGTTT
ACTGTGGAATTTATGACAATGCATTAGACAATGACAACACTACAATCTTGCTAAAGGTTTCAATTTATACCA
AGGACCTGAGTGGCTGTGGCCTATTGGGTATTTCTTCTGCAAAAATATATTTTCCAGATTGATGGGC
CCGGAGACTACTGCAAAGACTATAGTTTGGTTAAAAATGTTCTTTCCCGACATTATGTTTCATCTTGAGA
GATCCCCTTGGAAAGGACTTCCAGAAGTACCAATGAGAATGCCAGTACTGTCTTTTACAGTGTGAAAC
ACAAGCCTGGTCAATTGCTACTATTCTTGGACACTTTTATGATTTA

ACGCGTACGCGGCCGCTCGAGCAGAACTCATCTCAGAAGAGGATCTGGCAGCAATGATATCCTGGATT
ACAAGGATGACGACGATAAGGTTTAA

Protein Sequence: >RC210005 representing NM_000642
 Red=Cloning site Green=Tags(s)

MGHSKQIRILLNEMEKLEKTLFRLEQGYELQFRLGPTLQGKAVTYVTNYPFPGETFNREKFRSLDWENP
 TEREDDSKYCKLNLQQSGSFQYYFLQGNKSGGGYIVVDPILRVGADNHVLPDCVTLQTF LAKCLGPF
 DEWESRLRVAKESGYNMIHFTPLQTLGLSRSCYSLANQLELNPDFSRPNRKYTWNDVQQLVEKLKKEWNV
 ICITDVVYNHTAANSKWIQEHEPEAYNLVNSPHLKPAVLDRALWRFSCDVAEGKYKEKGIPALIENDHH
 MNSIRKIIWEDIFPKLKLWEFFQVDVNKAVEQFRRLLTQENRRVTKSDPNQHLTI IQDPEYRRFGCTVDM
 NIALTTFIPHDKGPAAIECCNWFHKRMEELNSEKHRLINYHQEQAVNCLLGNV FYERLAGHGPKLGPVT
 RKHPLVTRYFTFPFEEIDF SMEESMIHLPNKACFLMAHNGWVMGDDPLRNFAEPGSEVYLRRELICWGDS
 VKLRYGNKPEDCPYLWAHMKYTEITATYFQGVRLDNCHSTPLHVAEYMLDAARNLQPNLYVVAELFTGS
 EDLDNVFVTRLGISSLIREAMSAYNSHEEGRLVYRYGGEPVGSFVQPCLRPLMPAIAHALFMDITHDNEC
 PIVHRSAYDALPSTTIVSMACCASGSTRGYDELVPHQISVVSEERFYTKWNPEALPSNTGEVNFQSGIIA
 ARCAISKLHQELGAKGFIQVYVDQVDEDIVAVTRHSPSIHQSVAVSRTAFRNPKTSFYSKEVPQMCIPG
 KIEEVVLEARTIERNTKPYRKDENSINGTPDITVEIREHIQLNESKIVKQAGVATKGPNEYIQEIEFENL
 SPGSVIIFRVSLDPHAQVAVGILRNHLTQFSPHFKSGSLAVDNADPILKIPFASLASRLTLAELNQLILYR
 CESEEKEDGGGCYDIPNWSALKYAGLQGLMSVLAEIRPKNDLGHFPCNNLRSGDWMIDYVSNRLISRSGT
 IAEVKGWLQAMFFYLKQIPRYLIPCYFDAILIGAYTTLLDTAWKQMSFVQNGSTFVKHLSLGSVQLCGV
 GKFPSPILPALMDVPYRLNEITKEKEQCCVSLAAGLPHFSSGIFRCWGRDTFIALRGILLITGRYVEA
 RNIILAFAGTLRHGLIPNLLGEGIYARYNCRDAVWWWLQCIQDYCKMVPNGLDILKCPVSRMYPTDSDAP
 LPAGTLDQPLFEVIQEAMQKHMQGIQFRERNAGPQIDRNMKDEGFNITAGVDEETGFVYGGNRFNCGTWM
 DKMGESDRARNRGIPATPRDGS AVEIVGLSKSAVRWLEL SKKNIFFPYHEVTVKRHGKAIKVSYDEWNRK
 IQDNFEKLFHVSEDPDLNEKHPNLVHKRGIYKDSYGASSPWCDYQLRPNFTIAMVAPELFTTEKAWKA
 LEIAEKKLLGPLGMKTLDPDDMVYCGIYDNALDNDNYNLAKGFNYHQGPEWLWPIGYFLRAKL YFSRLMG
 PETTAKTIVLVKNVLSRHYVHLERSPWKGLPEL TNENAQYCPFCSETQAWSIATILETL YDL

TRTRPLEQKLISEEDLAANDILDYKDDDDKV

Restriction Sites:

SgfI-MluI

Cloning Scheme:

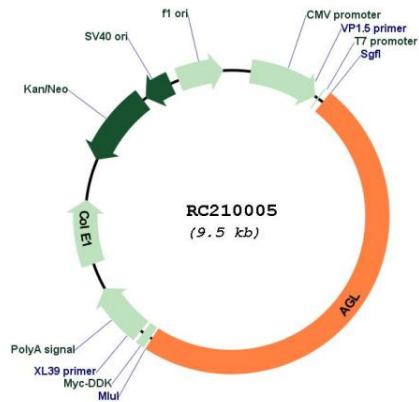


ACCN: NM_000642

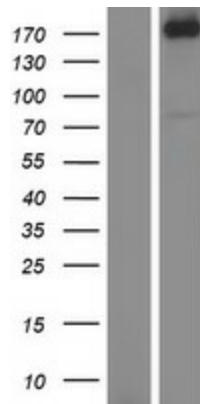
ORF Size: 4596 bp

OTI Disclaimer:	The molecular sequence of this clone aligns with the gene accession number as a point of reference only. However, individual transcript sequences of the same gene can differ through naturally occurring variations (e.g. polymorphisms), each with its own valid existence. This clone is substantially in agreement with the reference, but a complete review of all prevailing variants is recommended prior to use. More info
OTI Annotation:	This clone was engineered to express the complete ORF with an expression tag. Expression varies depending on the nature of the gene.
Components:	The ORF clone is ion-exchange column purified and shipped in a 2D barcoded Matrix tube containing 10ug of transfection-ready, dried plasmid DNA (reconstitute with 100 ul of water).
Reconstitution Method:	<ol style="list-style-type: none"> 1. Centrifuge at 5,000xg for 5min. 2. Carefully open the tube and add 100ul of sterile water to dissolve the DNA. 3. Close the tube and incubate for 10 minutes at room temperature. 4. Briefly vortex the tube and then do a quick spin (less than 5000xg) to concentrate the liquid at the bottom. 5. Store the suspended plasmid at -20°C. The DNA is stable for at least one year from date of shipping when stored at -20°C.
RefSeq:	NM_000642.3
RefSeq Size:	7371 bp
RefSeq ORF:	4599 bp
Locus ID:	178
UniProt ID:	P35573
Cytogenetics:	1p21.2
Protein Families:	Druggable Genome
Protein Pathways:	Metabolic pathways, Starch and sucrose metabolism
MW:	174.6 kDa
Gene Summary:	This gene encodes the glycogen debrancher enzyme which is involved in glycogen degradation. This enzyme has two independent catalytic activities which occur at different sites on the protein: a 4-alpha-glucotransferase activity and a amylo-1,6-glucosidase activity. Mutations in this gene are associated with glycogen storage disease although a wide range of enzymatic and clinical variability occurs which may be due to tissue-specific alternative splicing. Alternatively spliced transcripts encoding different isoforms have been described. [provided by RefSeq, Jul 2008]

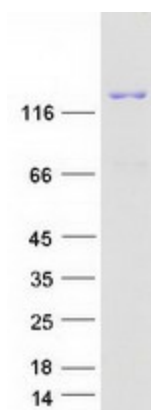
Product images:



Circular map for RC210005



Western blot validation of overexpression lysate (Cat# [LY424591]) using anti-DDK antibody (Cat# [TA50011-100]). Left: Cell lysates from untransfected HEK293T cells; Right: Cell lysates from HEK293T cells transfected with RC210005 using transfection reagent MegaTran 2.0 (Cat# [TT210002]).



Coomassie blue staining of purified AGL protein (Cat# [TP310005]). The protein was produced from HEK293T cells transfected with AGL cDNA clone (Cat# RC210005) using MegaTran 2.0 (Cat# [TT210002]).