

## Product datasheet for RC210003

### CCR4 (NM\_005508) Human Tagged ORF Clone

#### Product data:

Product Type:	Expression Plasmids
Product Name:	CCR4 (NM_005508) Human Tagged ORF Clone
Tag:	Myc-DDK
Symbol:	CCR4
Synonyms:	CC-CKR-4; CD194; ChemR13; CKR4; CMKBR4; HGCN:14099; K5-5
Mammalian Cell Selection:	Neomycin
Vector:	pCMV6-Entry (PS100001)
E. coli Selection:	Kanamycin (25 ug/mL)
ORF Nucleotide Sequence:	>RC210003 ORF sequence Red=Cloning site Blue=ORF Green=Tags(s)

TTTTGTAATACGACTCACTATAGGGCGGCCGGAATTCGTCGACTGGATCCGGTACCGAGGAGATCTGCC  
GCC**CGATCGCC**

ATGAACCCACGGATATAGCAGACACCACCTCGATGAAAGCATATACAGCAATTAATCTGTATGAAA  
GTATCCCCAAGCCTTGACCAAAGAAGGCATCAAGGCATTTGGGAGCTCTTCTGCCCCACTGTATTC  
CTTGGTTTTGTATTTGGTCTGCTTGGAAATTCTGTGGTGGTTCTGGTCTGTTCAAATACAAGCGGCTC  
AGGTCCATGACTGATGTGTACCTGCTCAACCTTGCCATCTCGGATCTGCTCTTCGTGTTTTCCCTCCCTT  
TTTGGGGCTACTATGCAGCAGACCAGTGGGTTTTTGGGCTAGGTCTGTGCAAGATGATTTCTGGATGTA  
CTTGGTGGGCTTTTACAGTGGCATATTCTTTGTCATGCTCATGAGCATTGATAGATACCTGGCAATTGTG  
CACGCGGTGTTTTCTTGAGGGCAAGGACCTTGACTTATGGGGTCATCACCAGTTTGGCTACATGGTCAG  
TGGCTGTGTTTCGCTCCCTTCTGGCTTTCTGTTCACTGTTTATACTGAGCGCAACCATACTACTG  
CAAACCAAGTACTCTCAACTCCACGACGTGGAAGGTTCTCAGCTCCCTGGAAATCAACATTCTCGGA  
TTGGTGATCCCCTTAGGGATCATGTGTTTTGCTACTCCATGATCATCAGGACCTTGACGATTGAAAA  
ATGAGAAGAAGAACAAGGCGGTGAAGATGATCTTTGCCGTGGTGGTCTCTTCTTGGGTCTGGACACC  
TTACAACATAGTCTCTTCTAGAGACCCTGGTGGAGCTAGAAGTCCCTCAGGACTGCACCTTTGAAAGA  
TACTTGGACTATGCCATCCAGGCCACAGAACTCTGGCTTTTGTCACTGCTGCCTTAATCCCACATCT  
ACTTTTTTCTGGGGAGAAATTTGCAAGTACATCCTACAGCTTTCAAACCTGCAGGGGCTTTTTGT  
GCTCTGCCAATACTGTGGGCTCTCCAAATTTACTCTGCTGACACCCCGCTCATCTTACACGCAGTCC  
ACCATGGATCATGATCTCCATGATGCTCTG

**ACGCGT**ACGCGGCCGCTCGAGCAGAACTCATCTCAGAAGAGGATCTGGCAGCAATGATATCCTGGATT  
ACAAGGATGACGACGATAAGGTTTAA



[View online »](#)

**Protein Sequence:** >RC210003 protein sequence  
Red=Cloning site Green=Tags(s)

MNPTDIADTTLDESIYSNYLYESIPKPCTKEGIKAFGELFLPPLYSLVFVFGLLGNSVVVLVLFKYKRL  
 RSMTDVYLLNLAISDLLFVSLPFWGYAADQWVFLGLCKMISWMYLVGFYSGIFFVMLMSIDRYLAIV  
 HAVFSLRARTLYGVITSLATWSVAVFASLPGFLFSTCYTERNHTYCKTKYSLNSTTWKVLSSLEINILG  
 LVIPLGIMLFCYSMIIRTLQHCKNEKKNKAVKMIFAVVVFLFGFWTPYNIIVLFLFLETLVELEVLQDCTFER  
 YLDYAIQATETLAFVHCCLNPIIYFFLGEKFRKYILQLFKTCRGLFVLCQYCGLLQIYSADTPSSSYTQS  
 TMDHDLHDAL

TRTRPLEQKLISEEDLAANDILDYKDDDDKV

**Chromatograms:** [https://cdn.origene.com/chromatograms/mk6070\\_c05.zip](https://cdn.origene.com/chromatograms/mk6070_c05.zip)

**Restriction Sites:** SgfI-MluI

**Cloning Scheme:**



\* The last codon before the Stop codon of the ORF

**ACCN:** NM\_005508

**ORF Size:** 1080 bp

**OTI Disclaimer:** The molecular sequence of this clone aligns with the gene accession number as a point of reference only. However, individual transcript sequences of the same gene can differ through naturally occurring variations (e.g. polymorphisms), each with its own valid existence. This clone is substantially in agreement with the reference, but a complete review of all prevailing variants is recommended prior to use. [More info](#)

**OTI Annotation:** This clone was engineered to express the complete ORF with an expression tag. Expression varies depending on the nature of the gene.

**Components:** The ORF clone is ion-exchange column purified and shipped in a 2D barcoded Matrix tube containing 10ug of transfection-ready, dried plasmid DNA (reconstitute with 100 ul of water).

**Reconstitution Method:**

1. Centrifuge at 5,000xg for 5min.
2. Carefully open the tube and add 100ul of sterile water to dissolve the DNA.
3. Close the tube and incubate for 10 minutes at room temperature.
4. Briefly vortex the tube and then do a quick spin (less than 5000xg) to concentrate the liquid at the bottom.
5. Store the suspended plasmid at -20°C. The DNA is stable for at least one year from date of shipping when stored at -20°C.

**RefSeq:** [NM\\_005508.5](#)

**RefSeq Size:** 1657 bp

**RefSeq ORF:** 1083 bp

**Locus ID:** 1233

**UniProt ID:** [P51679](#)

**Cytogenetics:** 3p22.3

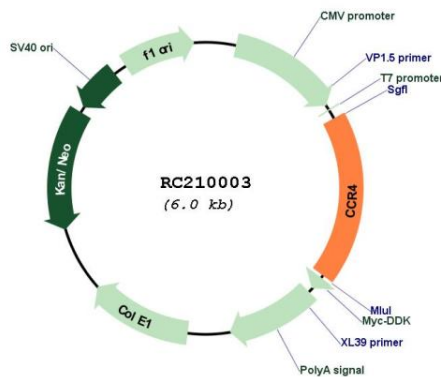
**Protein Families:** Druggable Genome, GPCR, Transmembrane

**Protein Pathways:** Chemokine signaling pathway, Cytokine-cytokine receptor interaction

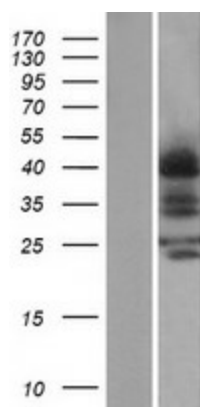
**MW:** 41.4 kDa

**Gene Summary:** The protein encoded by this gene belongs to the G-protein-coupled receptor family . It is a receptor for the CC chemokine - MIP-1, RANTES, TARC and MCP-1. Chemokines are a group of small polypeptide, structurally related molecules that regulate cell trafficking of various types of leukocytes. The chemokines also play fundamental roles in the development, homeostasis, and function of the immune system, and they have effects on cells of the central nervous system as well as on endothelial cells involved in angiogenesis or angiostasis. [provided by RefSeq, Jul 2008]

**Product images:**



Circular map for RC210003



Western blot validation of overexpression lysate (Cat# [LY401687]) using anti-DDK antibody (Cat# [TA50011-100]). Left: Cell lysates from untransfected HEK293T cells; Right: Cell lysates from HEK293T cells transfected with RC210003 using transfection reagent MegaTran 2.0 (Cat# [TT210002]).