

Product datasheet for **RC209999**

Hemoglobin subunit delta (HBD) (NM_000519) Human Tagged ORF Clone

Product data:

Product Type:	Expression Plasmids
Product Name:	Hemoglobin subunit delta (HBD) (NM_000519) Human Tagged ORF Clone
Tag:	Myc-DDK
Symbol:	Hemoglobin subunit delta
Mammalian Cell Selection:	Neomycin
Vector:	pCMV6-Entry (PS100001)
E. coli Selection:	Kanamycin (25 ug/mL)
ORF Nucleotide Sequence:	>RC209999 ORF sequence Red=Cloning site Blue=ORF Green=Tags(s)

TTTTGTAATACGACTCACTATAGGGCGGCCGGAATTCGTCGACTGGATCCGGTACCGAGGAGATCTGCCGCC**CGATCGCC**

ATGGTGCACTGACTCCTGAGGAGAAGACTGCTGTCAATGCCCTGTGGGGCAAAGTGAACGTGGATGCAGTTGGTGGTGAGGCCCTGGGCAGATTACTGGTGGTCTACCTTGGACCCAGAGGTTCTTTGAGTCTTTGGGGATCTGTCTCCTGATGCTGTTATGGGCAACCCTAAGGTGAAGGCTCATGGCAAGAAGGTGCTAGGTGCCTTTAGTGATGGCCTGGCTCACCTGGACAACCTCAAGGGCACTTTTCTCAGCTGAGTGAGCTGCATGTGACAAGCTGCACGTGGATCCTGAGAATTTCAGGCTCTGGGCAATGTGCTGGTGTGTGTGCTGGCCCCGCACTTTGGCAAGGAATTCACCCACAAATGCAGGCTGCCTATCAGAAGTGGTGGCTGGTGTGGCTAATGCCTGGCTCACAAGTACCAT

ACGCGTACGCGGCCGCTCGAGCAGAACTCATCTCAGAAGAGGATCTGGCAGCAAATGATATCCTGGATTACAAGGATGACGACGATAAGGTTTAA

Protein Sequence:	>RC209999 protein sequence Red=Cloning site Green=Tags(s)
-------------------	--

MVHLTPEEKTAVNALWGKYNVDVAVGGEALGRLLVYYPWTQRFFESFGDLSSPDVAVMGNPKVKAHGKKVLGAFSDGLAHLNLDKGTFSQLESLHCDKLVDPENFRLLGNLVLCVLRNFGKEFTPMQAAAYQKVAVGAVANALAHKYH

TRTRPLEQKLI SEEDLAANDILDYKDDDDKV

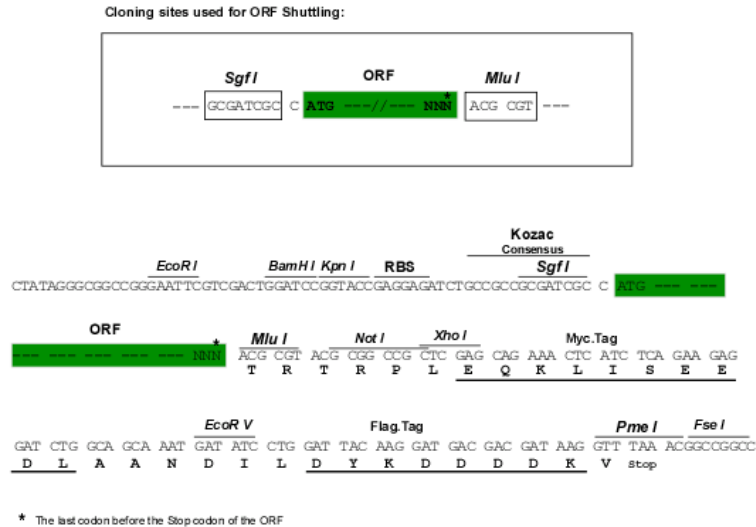
Chromatograms: https://cdn.origene.com/chromatograms/mk6143_d08.zip

Restriction Sites: SgfI-MluI



[View online >](#)

Cloning Scheme:



ACCN: NM_000519

ORF Size: 441 bp

OTI Disclaimer: The molecular sequence of this clone aligns with the gene accession number as a point of reference only. However, individual transcript sequences of the same gene can differ through naturally occurring variations (e.g. polymorphisms), each with its own valid existence. This clone is substantially in agreement with the reference, but a complete review of all prevailing variants is recommended prior to use. [More info](#)

OTI Annotation: This clone was engineered to express the complete ORF with an expression tag. Expression varies depending on the nature of the gene.

Components: The ORF clone is ion-exchange column purified and shipped in a 2D barcoded Matrix tube containing 10ug of transfection-ready, dried plasmid DNA (reconstitute with 100 ul of water).

- Reconstitution Method:
1. Centrifuge at 5,000xg for 5min.
 2. Carefully open the tube and add 100ul of sterile water to dissolve the DNA.
 3. Close the tube and incubate for 10 minutes at room temperature.
 4. Briefly vortex the tube and then do a quick spin (less than 5000xg) to concentrate the liquid at the bottom.
 5. Store the suspended plasmid at -20°C. The DNA is stable for at least one year from date of shipping when stored at -20°C.

RefSeq: [NM_000519.4](#)

RefSeq Size: 774 bp

RefSeq ORF: 444 bp

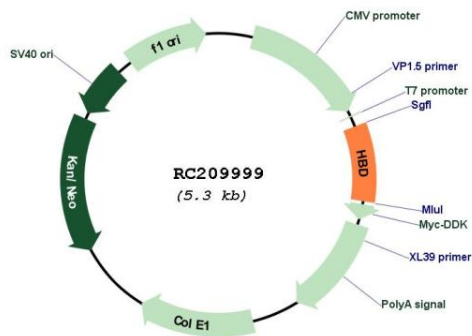
Locus ID: 3045

UniProt ID: [P02042](#)

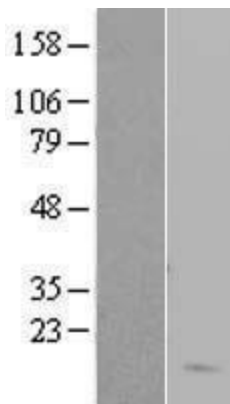
Cytogenetics: 11p15.4
Domains: globin
MW: 16.1 kDa

Gene Summary: The delta (HBD) and beta (HBB) genes are normally expressed in the adult: two alpha chains plus two beta chains constitute HbA, which in normal adult life comprises about 97% of the total hemoglobin. Two alpha chains plus two delta chains constitute HbA-2, which with HbF comprises the remaining 3% of adult hemoglobin. Five beta-like globin genes are found within a 45 kb cluster on chromosome 11 in the following order: 5'-epsilon--Ggamma--Agamma--delta--beta-3'. Mutations in the delta-globin gene are associated with beta-thalassemia. [provided by RefSeq, Jul 2008]

Product images:



Circular map for RC209999



Western blot validation of overexpression lysate (Cat# [LY400175]) using anti-DDK antibody (Cat# [TA50011-100]). Left: Cell lysates from untransfected HEK293T cells; Right: Cell lysates from HEK293T cells transfected with RC209999 using transfection reagent MegaTran 2.0 (Cat# [TT210002]).