

## Product datasheet for **RC209998**

### **TINAG (NM\_014464) Human Tagged ORF Clone**

#### **Product data:**

Product Type:	Expression Plasmids
Product Name:	TINAG (NM_014464) Human Tagged ORF Clone
Tag:	Myc-DDK
Symbol:	TINAG
Synonyms:	TIN-AG
Mammalian Cell Selection:	Neomycin
Vector:	pCMV6-Entry (PS100001)
E. coli Selection:	Kanamycin (25 ug/mL)



[View online »](#)

**ORF Nucleotide Sequence:**

>RC209998 ORF sequence  
 Red=Cloning site Blue=ORF Green=Tags(s)

TTTTGTAATACGACTCACTATAGGGCGGCCGGAATTCGTCGACTGGATCCGGTACCGAGGAGATCTGCC  
 GCC**GCGATCGCC**

ATGTGGACCGGATATAAGATCTTAATCTTCTCTTATCTTACTACAGAAATCTGGATGGAGAAGCGGTATT  
 TATCTCAAAGAGAAGTGGACCTAGAGGCTTATTTCACTAGGAATCACACGTTTTGCAAGGTAAGTACTGATT  
 CAAAAGAGCCATTTTCCAAGGGCAATACTGTAGAAATTTGGCTGTTGTGAAGACAGAGATGATGGCTGT  
 GTCAGTACTGATGCGGCGAATGCGTTGTGCTACTGTGATAAATCTGTGACAGAGAAAATCTGATT  
 GCTGTCTGACTACAAGTCTTTTGGCGTGAAGAGAAAGAATGGCCTCCTCACACACAGCCTTGGTATCC  
 AGAAGTTGCTTCAAAGATGGTCAACATTATGAAGAGGGATCAGTAATTAAGAAAACGCAACTCTGC  
 ACATGCTCAGGACAGCAATGAAATGTTCCAGCATGTATGCCTTGTTCGTTGAGAAATTAATGAACAGG  
 TCAATAAAGGAGACTATGGATGGACAGCACAGAATTACAGCCAATTTGGGGAATGACTTTAGAAGATGG  
 TTTTAAATTTGCGCTTGGCACTTTGCCACCTAGTCTCATGCTCCTGAGCATGAATGAAATGACAGCTTCT  
 TACCTGCAACAACCTGATCTCCAGAGTTTTTTGTTGCTTCTTATAAATGGCCTGGATGGACTCATGGCC  
 CATTGGATCAAAAAAATGTGCTGCATCCTGGGCATTTTCCACTGCAAGTGTGGCTGCTGACCGAATAGC  
 AATTCACTAAGGGTCGATACACGGCCATCTATCCCCTCAGAAATTTGATCTCTTGTGTGCCAAGAAC  
 CGTCATGGATGCAATAGTGAAGCATCGATAGGGCTTGGTGGTACCTGAGAAAACGTGGACTGGTATCCC  
 ACGCATGCTACCCACTTTTCAAAGCAAAAATGCTACCAACAATGGATGTGCCATGGCAAGCAGGTCTGA  
 TGGCGGAGGAAAACGGCATGCCACGAAGCCATGTCCCAACAACGTAGAAAAATCTAACAGGATCTATCAA  
 TGTTCTCTCCATACAGAGTCTTCCAACGAACTGAGATAATGAAAGAAATCATGCAAAATGGACCAG  
 TTCAAGCCATAATGCAAGTCCATGAAGATTTCTTCCATTATAAGACAGGGATATACAGACATGTTACCAG  
 CACAAATAAAGAATCAGAAAAATATCGAAAGCTTCAGACACATGCAGTCAAACCTACTGGATGGGACACA  
 CTGAGAGGAGCACAAGGGCAGAAAAGAAAAATTTGGATTGCTGCCAATCCTGGGAAAAGTCATGGGGAG  
 AGAATGGCTATTTAGGATTTCTCGAGGAGTAAATGAGTCCGACATTGAAAAGTTGATTATCGCAGCTTG  
 GGGCAACTGACGAGTTCTGATGAACCA

**ACGCGT**ACGCGGCCGCTCGAGCAGAAACTCATCTCAGAAGAGGATCTGGCAGCAATGATATCCTGGATT  
 ACAAGGATGACGACGATAAGGTTTAA

**Protein Sequence:**

>RC209998 protein sequence  
 Red=Cloning site Green=Tags(s)

MWTGYKILIFSYLTTEIWMKRYLSQREVDLEAYFTRNHTVLQGRFKRAIFQGQYCRNFGCCEDRDDGC  
 VTEFYAANALCYCDKFCRENSDCCPDYKSFCEKEWPPHTQPWYPEGCFKDGQHYEEGVSIVIKENCNSC  
 TCSGQQWKCSQHVCLVRSELIEQVNGDYGWTAQNYSQFWGMTLEDGFKFRLGTLPPSLMLLSMNEMTAS  
 LPATTDLPEFFVASYKWPWTHGPLDQKNCAASWAFSTASVAADRIAIIQSKGRYTANLSPQNLISCCAKN  
 RHGCNSGSDRAWWYLRKRLVSHACYPLFKDQATNNGCAMASRSDGRGKRHATKPCPNNVEKSNRIYQ  
 CSPPYRVSSNETEIMKEIMQNGPVQAIMQVHEDFFHYKTGIYRHTSTNKESEKYRKLQTHAVKLTGWGT  
 LRGAQQQKEKFWIAANSWGSWGENGYFRILRGVNESDIEKLIIAAWGQLTSSDEP

**TR**TRPLEQKLISEEDLAANDILDYKDDDDKV

**Chromatograms:**

[https://cdn.origene.com/chromatograms/mk6178\\_g11.zip](https://cdn.origene.com/chromatograms/mk6178_g11.zip)

**Restriction Sites:**

Sgfl-Mlul

**Cloning Scheme:**


**ACCN:** NM\_014464

**ORF Size:** 1428 bp

**OTI Disclaimer:** The molecular sequence of this clone aligns with the gene accession number as a point of reference only. However, individual transcript sequences of the same gene can differ through naturally occurring variations (e.g. polymorphisms), each with its own valid existence. This clone is substantially in agreement with the reference, but a complete review of all prevailing variants is recommended prior to use. [More info](#)

**OTI Annotation:** This clone was engineered to express the complete ORF with an expression tag. Expression varies depending on the nature of the gene.

**Components:** The ORF clone is ion-exchange column purified and shipped in a 2D barcoded Matrix tube containing 10ug of transfection-ready, dried plasmid DNA (reconstitute with 100 ul of water).

**Reconstitution Method:**

1. Centrifuge at 5,000xg for 5min.
2. Carefully open the tube and add 100ul of sterile water to dissolve the DNA.
3. Close the tube and incubate for 10 minutes at room temperature.
4. Briefly vortex the tube and then do a quick spin (less than 5000xg) to concentrate the liquid at the bottom.
5. Store the suspended plasmid at -20°C. The DNA is stable for at least one year from date of shipping when stored at -20°C.

**RefSeq:** [NM\\_014464.2](#), [NP\\_055279.2](#)

**RefSeq Size:** 1804 bp

**RefSeq ORF:** 1431 bp

**Locus ID:** 27283

**UniProt ID:** [Q9UJW2](#)

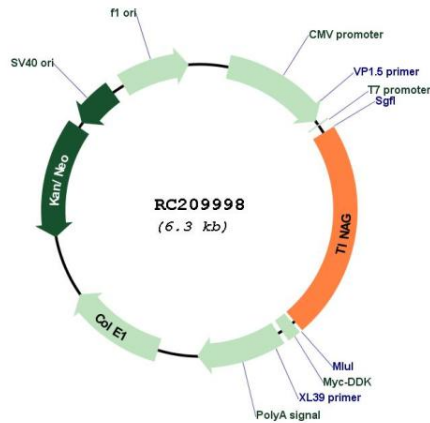
**Cytogenetics:** 6p12.1

**Protein Families:** Druggable Genome, Protease, Secreted Protein

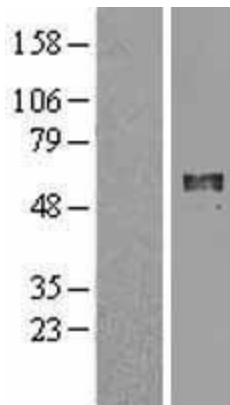
**MW:** 54.6 kDa

**Gene Summary:** This gene encodes a glycoprotein that is restricted within the kidney to the basement membranes underlying the epithelium of Bowman's capsule and proximal and distal tubules. Autoantibodies against this protein are found in sera of patients with tubulointerstitial nephritis, membranous nephropathy and anti-glomerular basement membrane nephritis. Ontogeny studies suggest that the expression of this antigen is developmentally regulated in a precise spatial and temporal pattern throughout nephrogenesis. [provided by RefSeq, Nov 2011]

**Product images:**



Circular map for RC209998



Western blot validation of overexpression lysate (Cat# [LY402341]) using anti-DDK antibody (Cat# [TA50011-100]). Left: Cell lysates from untransfected HEK293T cells; Right: Cell lysates from HEK293T cells transfected with RC209998 using transfection reagent MegaTran 2.0 (Cat# [TT210002]).