

## Product datasheet for **RC209995**

### IL22 (NM\_020525) Human Tagged ORF Clone

#### Product data:

**Product Type:** Expression Plasmids  
**Product Name:** IL22 (NM\_020525) Human Tagged ORF Clone  
**Tag:** Myc-DDK  
**Symbol:** IL22  
**Synonyms:** IL-21; IL-22; IL-D110; IL-TIF; ILTIF; TIFa; TIFIL-23; zcyto18  
**Mammalian Cell Selection:** Neomycin  
**Vector:** pCMV6-Entry (PS100001)  
**E. coli Selection:** Kanamycin (25 ug/mL)  
**ORF Nucleotide Sequence:** >RC209995 ORF sequence  
Red=Cloning site Blue=ORF Green=Tags(s)

TTTTGTAATACGACTCACTATAGGGCGCCGGGAATTCGTCGACTGGATCCGGTACCGAGGAGATCTGCC  
GCC**CGATCGCC**

ATGGCCGCCCTGCAGAAATCTGTGAGCTCTTTCCTTATGGGGACCCTGGCCACCAGCTGCCTCCTTCTCT  
TGGCCCTCTTGGTACAGGGAGGAGCAGCTGCGCCATCAGCTCCCACTGCAGGCTTGACAAGTCCA  
CCAGCAGCCCTATATACCAACCGCACCTTCATGCTGGCTAAGGAGGCTAGCTTGGCTGATAACAACACA  
GACGTTCTGCTCATTGGGAGAACTGTCCACGGAGTCAGTATGAGTGAGCGCTGCTATCTGATGAAGC  
AGGTGCTGAACCTCACCTTGAAGAAGTGTTCCTCAATCTGATAGTTCCAGCCTTATATGCAGGA  
GGTGGTGCCCTTCTGGCCAGGCTCAGCAACAGGCTAAGCACATGTCATATTGAAGGTGATGACCTGCAT  
ATCCAGAGGAATGTGAAAAGCTGAAGGACACAGTGAAAAAGCTTGGAGAGAGTGAGAGATCAAAGCAA  
TTGGAGAACTGGATTTGCTGTTTATGTCTCTGAGAAATGCCTGCATT

**ACGCGT**ACGCGGCCGCTCGAGCAGAACTCATCTCAGAAGAGGATCTGGCAGCAAATGATATCCTGGATT  
ACAAGGATGACGACGATAAGGTTTAA

**Protein Sequence:** >RC209995 protein sequence  
Red=Cloning site Green=Tags(s)

MAALQKSVSSFLMGTLATSCLLLLALLVQGGAAPISSHCRLDKSNFQQPYITNRFMLAKEASLADNNT  
DVRLIGEKLFHGVSMSERCYLMKQVLFNFTLEEVLPQSDRFQPYMQEVVPLARLSNRLSTCHIEGDDLH  
IQRNVQKLKDTVKKLGESGEIKAIGELDLLFMSLRNACI

**TR**TRPLEQKLISEEDLAANDILDYKDDDDKV

**Chromatograms:** [https://cdn.origene.com/chromatograms/mk6547\\_f10.zip](https://cdn.origene.com/chromatograms/mk6547_f10.zip)



[View online »](#)

Restriction Sites: SgfI-MluI

Cloning Scheme:



ACCN: NM\_020525

ORF Size: 537 bp

OTI Disclaimer: Due to the inherent nature of this plasmid, standard methods to replicate additional amounts of DNA in E. coli are highly likely to result in mutations and/or rearrangements. Therefore, OriGene does not guarantee the capability to replicate this plasmid DNA. Additional amounts of DNA can be purchased from OriGene with batch-specific, full-sequence verification at a reduced cost. Please contact our customer care team at [custsupport@origene.com](mailto:custsupport@origene.com) or by calling 301.340.3188 option 3 for pricing and delivery.

The molecular sequence of this clone aligns with the gene accession number as a point of reference only. However, individual transcript sequences of the same gene can differ through naturally occurring variations (e.g. polymorphisms), each with its own valid existence. This clone is substantially in agreement with the reference, but a complete review of all prevailing variants is recommended prior to use. [More info](#)

OTI Annotation: This clone was engineered to express the complete ORF with an expression tag. Expression varies depending on the nature of the gene.

Components: The ORF clone is ion-exchange column purified and shipped in a 2D barcoded Matrix tube containing 10ug of transfection-ready, dried plasmid DNA (reconstitute with 100 ul of water).

- Reconstitution Method:
1. Centrifuge at 5,000xg for 5min.
  2. Carefully open the tube and add 100ul of sterile water to dissolve the DNA.
  3. Close the tube and incubate for 10 minutes at room temperature.
  4. Briefly vortex the tube and then do a quick spin (less than 5000xg) to concentrate the liquid at the bottom.
  5. Store the suspended plasmid at -20°C. The DNA is stable for at least one year from date of shipping when stored at -20°C.

**Note:** Plasmids are not sterile. For experiments where strict sterility is required, filtration with 0.22um filter is required.

**RefSeq:** [NM\\_020525.5](#)

**RefSeq Size:** 1147 bp

**RefSeq ORF:** 540 bp

**Locus ID:** 50616

**UniProt ID:** [Q9GZX6](#)

**Cytogenetics:** 12q15

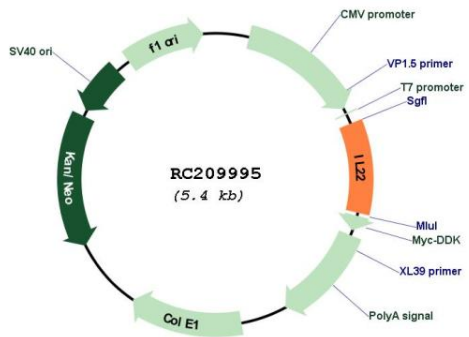
**Protein Families:** Druggable Genome, Secreted Protein, Transmembrane

**Protein Pathways:** Cytokine-cytokine receptor interaction, Jak-STAT signaling pathway

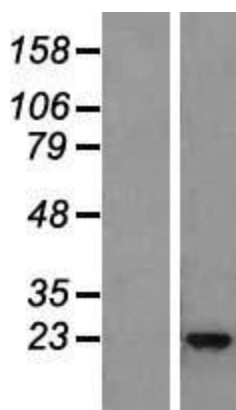
**MW:** 20 kDa

**Gene Summary:** This gene is a member of the IL10 family of cytokines that mediate cellular inflammatory responses. The encoded protein functions in antimicrobial defense at mucosal surfaces and in tissue repair. This protein also has pro-inflammatory properties and plays a role in the pathogenesis of several intestinal diseases. [provided by RefSeq, Jul 2018]

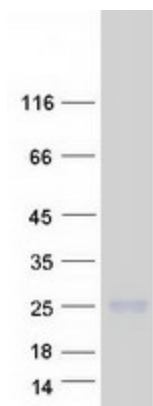
**Product images:**



Circular map for RC209995



Western blot validation of overexpression lysate (Cat# [LY412429]) using anti-DDK antibody (Cat# [TA50011-100]). Left: Cell lysates from untransfected HEK293T cells; Right: Cell lysates from HEK293T cells transfected with RC209995 using transfection reagent MegaTran 2.0 (Cat# [TT210002]).



Coomassie blue staining of purified IL22 protein (Cat# [TP309995]). The protein was produced from HEK293T cells transfected with IL22 cDNA clone (Cat# RC209995) using MegaTran 2.0 (Cat# [TT210002]).