

Product datasheet for **RC209987**

RPL10A (NM_007104) Human Tagged ORF Clone

Product data:

Product Type: Expression Plasmids
Product Name: RPL10A (NM_007104) Human Tagged ORF Clone
Tag: Myc-DDK
Symbol: RPL10A
Synonyms: Csa-19; CSA19; L10A; NEDD6
Mammalian Cell Selection: Neomycin
Vector: pCMV6-Entry (PS100001)
E. coli Selection: Kanamycin (25 ug/mL)
ORF Nucleotide Sequence: >RC209987 ORF sequence
Red=Cloning site Blue=ORF Green=Tags(s)

TTTTGTAATACGACTCACTATAGGGCGCCGGGAATTCGTCGACTGGATCCGGTACCGAGGAGATCTGCC
GCC**CGATCGCC**

ATGAGCAGCAAAGTCTCTCGCGACACCCTGTACGAGGCGGTGCGGGAAGTCCTGCACGGGAACCAGCGCA
AGCGCCGCAAGTTCCTGGAGACGGTGGAGTTGCAGATCAGCTTGAAGAACTATGATCCCCAGAAGGACAA
GCGCTTCTCGGGCACCGTCAGGCTTAAGTCCACTCCCCGCCCTAAGTTCTCTGTGTGTCTCTGGGGGAC
CAGCAGCACTGTGACGAGGCTAAGGCCGTGGATATCCCCACATGGACATCGAGGCGCTGAAAAACTCA
ACAAGAATAAAAACTGGTCAAGAAGCTGGCCAAGAAGTATGATGCGTTTTTGGCCTCAGAGTCTCTGAT
CAAGCAGATCCACGAATCCTCGGCCAGGTTTAAATAAGGCAGGAAAGTCCCTTCCCTGCTCACACAC
AACGAAAACATGGTGGCCAAAGTGGATGAGGTGAAGTCCACAATCAAGTCCAAATGAAGAAGGTGTTAT
GTCTGGCTGTAGCTGTTGGTCACGTGAAGATGACAGACGATGAGCTTGTGTATAACATTCACCTGGCTGT
CAACTTCTGGTGTATTGCTCAAGAAAACTGGCAGAAATGTCCGGGCCTTATATATCAAGAGCACCATG
GGCAAGCCCCAGCGCCTATAT

ACGCGTACGCGGCGCTCGAGCAGAACTCATCTCAGAAGAGGATCTGGCAGCAAATGATATCCTGGATT
ACAAGGATGACGACGATAAGGTTTAA



[View online »](#)

Protein Sequence: >RC209987 protein sequence
 Red=Cloning site Green=Tags(s)

MSSKVSRTLVEAVREVLHGNQRKRKRFLETVELQISLKNYDPQKDKRFSGTVRLKSTPRPKFSVCVLGD
 QQHCDEAKAVDIPHMDIEALKKLNKKNKLVKLLAKKYDAFLASESLIKQIPRILGPGLNKAGKFPSSLTH
 NENMVAKYDEVKSTIKFQMKKVLCLAVAVGHVMTDDELVYNIHLAVNFLVSLKKNWQNVRALYIKSTM
 GKPQRLY

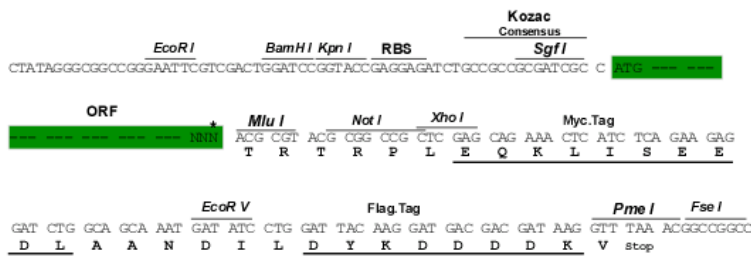
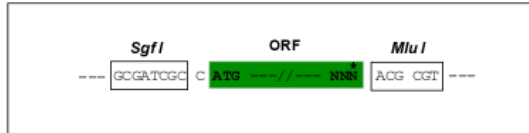
TRTRPLEQKLISEEDLAANDILDYKDDDDKV

Chromatograms: https://cdn.origene.com/chromatograms/mk6547_e06.zip

Restriction Sites: SgfI-MluI

Cloning Scheme:

Cloning sites used for ORF Shuttling:



* The last codon before the Stop codon of the ORF

ACCN: NM_007104

ORF Size: 651 bp

OTI Disclaimer: The molecular sequence of this clone aligns with the gene accession number as a point of reference only. However, individual transcript sequences of the same gene can differ through naturally occurring variations (e.g. polymorphisms), each with its own valid existence. This clone is substantially in agreement with the reference, but a complete review of all prevailing variants is recommended prior to use. [More info](#)

OTI Annotation: This clone was engineered to express the complete ORF with an expression tag. Expression varies depending on the nature of the gene.

Components: The ORF clone is ion-exchange column purified and shipped in a 2D barcoded Matrix tube containing 10ug of transfection-ready, dried plasmid DNA (reconstitute with 100 ul of water).

Reconstitution Method:

1. Centrifuge at 5,000xg for 5min.
2. Carefully open the tube and add 100ul of sterile water to dissolve the DNA.
3. Close the tube and incubate for 10 minutes at room temperature.
4. Briefly vortex the tube and then do a quick spin (less than 5000xg) to concentrate the liquid at the bottom.
5. Store the suspended plasmid at -20°C. The DNA is stable for at least one year from date of shipping when stored at -20°C.

RefSeq: [NM_007104.5](#)

RefSeq Size: 719 bp

RefSeq ORF: 654 bp

Locus ID: 4736

UniProt ID: [P62906](#)

Cytogenetics: 6p21.31

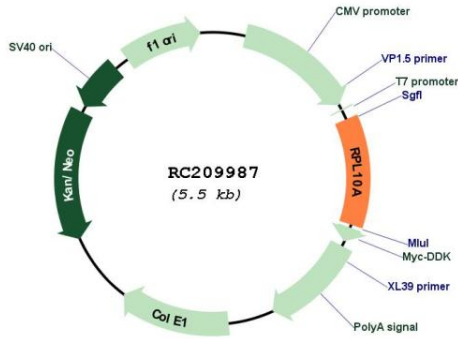
Domains: Ribosomal_L1

Protein Pathways: Ribosome

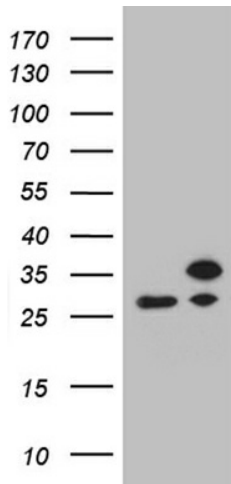
MW: 24.8 kDa

Gene Summary: Ribosomes, the organelles that catalyze protein synthesis, consist of a small 40S subunit and a large 60S subunit. Together these subunits are composed of 4 RNA species and approximately 80 structurally distinct proteins. This gene encodes a ribosomal protein that is a component of the 60S subunit. The protein belongs to the L1P family of ribosomal proteins. It is located in the cytoplasm. The expression of this gene is downregulated in the thymus by cyclosporin-A (CsA), an immunosuppressive drug. Studies in mice have shown that the expression of the ribosomal protein L10a gene is downregulated in neural precursor cells during development. This gene previously was referred to as NEDD6 (neural precursor cell expressed, developmentally downregulated 6), but it has been renamed RPL10A (ribosomal protein 10a). As is typical for genes encoding ribosomal proteins, there are multiple processed pseudogenes of this gene dispersed through the genome. [provided by RefSeq, Jul 2008]

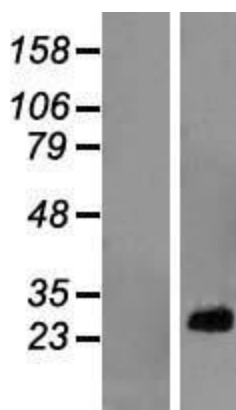
Product images:



Circular map for RC209987



HEK293T cells were transfected with the pCMV6-ENTRY control (Cat# [PS100001], Left lane) or pCMV6-ENTRY RPL10A (Cat# RC209987, Right lane) cDNA for 48 hrs and lysed. Equivalent amounts of cell lysates (5 ug per lane) were separated by SDS-PAGE and immunoblotted with anti-RPL10A (Cat# [TA809520])(1:500). Positive lysates [LY416199] (100ug) and [LC416199] (20ug) can be purchased separately from OriGene.



Western blot validation of overexpression lysate (Cat# [LY416199]) using anti-DDK antibody (Cat# [TA50011-100]). Left: Cell lysates from untransfected HEK293T cells; Right: Cell lysates from HEK293T cells transfected with RC209987 using transfection reagent MegaTran 2.0 (Cat# [TT210002]).