

Product datasheet for RC209982

GPR82 (NM_080817) Human Tagged ORF Clone

Product data:

Product Type:	Expression Plasmids
Product Name:	GPR82 (NM_080817) Human Tagged ORF Clone
Tag:	Myc-DDK
Symbol:	GPR82
Mammalian Cell Selection:	Neomycin
Vector:	pCMV6-Entry (PS100001)
E. coli Selection:	Kanamycin (25 ug/mL)
ORF Nucleotide Sequence:	>RC209982 representing NM_080817 Red=Cloning site Blue=ORF Green=Tags(s)

TTTTGTAATACGACTCACTATAGGGCGGCCGGAATTCGTCGACTGGATCCGGTACCGAGGAGATCTGCC
GCC**CGATCGCC**

ATGAACAACAATACAACATGTATTCAACCATCTATGATCTCTCCATGGCTTTACCAATCATTTACATCC
TCCTTTGTATTGTTGGTGTTTTTGGAAACACTCTCTCAATGGATATTTTTAACAAAAATAGGTAAAA
AACATCAACGCACATCTACCTGTCACACCTTGACTGCAAACTACTTGTGTGCAGTGCCATGCCTTTC
ATGAGTATCTATTTCTGAAAGGTTTCCAATGGGAATATCAATCTGCTCAATGCAGAGTGGTCAATTTTC
TGGGAACCTATCCATGCATGCAAGTATGTTTGCAGTCTCTTAATTTTAAAGTTGGATTGCCATAAGCCG
CTATGCTACCTTAATGCAAAAGGATTCCTCGCAAGAGACTACTTCATGCTATGAGAAAATATTTTATGGC
CATTTACTGAAAAATTTGCGCCAGCCAACTTTGCTAGAAAATATGCATTTACATATGGGGAGTTGTAC
TGGGCATAATCATTCCAGTTACCGTATACTACTCAGTCATAGAGGCTACAGAAGGAGAAGAGAGCCTATG
CTACAATCGGCAGATGGAAGTAGGAGCCATGATCTCTCAGATTGCAGGTCTCATTGGAACCATTTATT
GGATTTTCCTTTTAGTAGTACTAACATCATACTACTCTTTTGAAGCCATCTGAGAAAAATAAGAACCT
GTACGTCCATTATGGAGAAAGATTTGACTTACAGTTCTGTGAAAAGACATCTTTTGGTCATCCAGATTCT
ACTAATAGTTTGCTTCCTTCCTTATAGTATTTTAAACCCATTTTATGTTCTACACCAAAGAGATAAC
TGTCAGCAATTGAATTATTTAATAGAAACAAAAACATTCTCACCTGTCTTGCTTCGGCCAGAAGTAGCA
CAGACCCATTATATTTCTTTTATTAGACAAAACATTCAAGAAGACTATATAATCTCTTTACAAAGTC
TAATTCAGCACATATGCAATCATATGGT

ACGCGTACGCGGCCGCTCGAGCAGAACTCATCTCAGAAGAGGATCTGGCAGCAAATGATATCCTGGATT
ACAAGGATGACGACGATAAGGTTTAA



[View online »](#)

Protein Sequence: >RC209982 representing NM_080817
Red=Cloning site Green=Tags(s)

MNNNTTCIQPSMISSMALPIIYILLCIVGVFGNTLSQWIFLTKIGKKTSTHIYLSHLVTANLLVCSAMPF
 MSYFLKGFQWEYQSAQCRVVNFLGTLMSHSMFVSLILSWIAISRYATLMQKDSSQETTSCYEKIFYG
 HLLKKFRQPNFARKLCIYIWGVVLGIIIPVTVYYSVIEATEGEESLCYNRQMELGAMISQIAGLIGTTFI
 GFSFLVLTSYYSFVSHLRKIRTCTCSIMEKDLTYSSVKRHLLVIQILLIVCFLPYSIFKPIFYVLHQRDN
 CQQLNYLIETKNILTCLASARSSDPIIFLLLDKTFKKTLYNLFTKSNSAHMQSYG

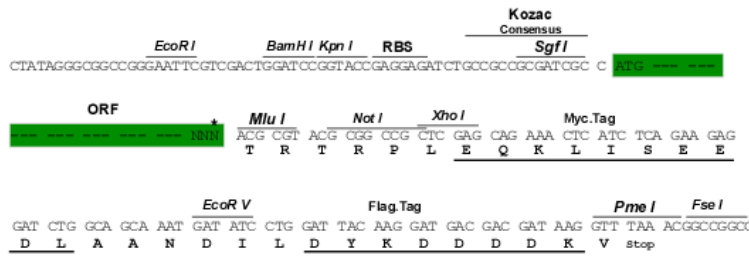
TRTRPLEQKLISEEDLAANDILDYKDDDDKV

Chromatograms: https://cdn.origene.com/chromatograms/ja1490_e10.zip

Restriction Sites: Sgfl-MluI

Cloning Scheme:

Cloning sites used for ORF Shuttling:



* The last codon before the Stop codon of the ORF

ACCN: NM_080817

ORF Size: 1008 bp

OTI Disclaimer: The molecular sequence of this clone aligns with the gene accession number as a point of reference only. However, individual transcript sequences of the same gene can differ through naturally occurring variations (e.g. polymorphisms), each with its own valid existence. This clone is substantially in agreement with the reference, but a complete review of all prevailing variants is recommended prior to use. [More info](#)

OTI Annotation: This clone was engineered to express the complete ORF with an expression tag. Expression varies depending on the nature of the gene.

Components: The ORF clone is ion-exchange column purified and shipped in a 2D barcoded Matrix tube containing 10ug of transfection-ready, dried plasmid DNA (reconstitute with 100 ul of water).

Reconstitution Method:

1. Centrifuge at 5,000xg for 5min.
2. Carefully open the tube and add 100ul of sterile water to dissolve the DNA.
3. Close the tube and incubate for 10 minutes at room temperature.
4. Briefly vortex the tube and then do a quick spin (less than 5000xg) to concentrate the liquid at the bottom.
5. Store the suspended plasmid at -20°C. The DNA is stable for at least one year from date of shipping when stored at -20°C.

RefSeq: [NM_080817.3](#)

RefSeq Size: 1441 bp

RefSeq ORF: 1011 bp

Locus ID: 27197

UniProt ID: [Q96P67](#)

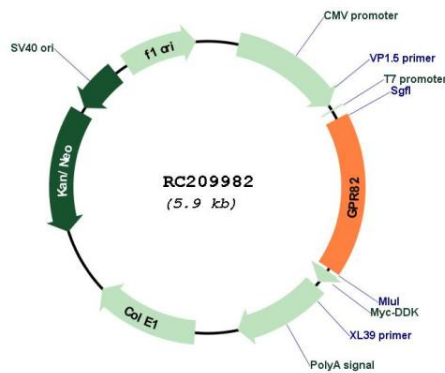
Cytogenetics: Xp11.4

Protein Families: Druggable Genome, GPCR, Transmembrane

MW: 38.2 kDa

Gene Summary: The protein encoded by this gene is an orphan G protein-coupled receptor of unknown function. The encoded protein is a member of a family of proteins that contain seven transmembrane domains and transduce extracellular signals through heterotrimeric G proteins. [provided by RefSeq, Sep 2011]

Product images:



Circular map for RC209982