

Product datasheet for RC209979L3

GLUT12 (SLC2A12) (NM_145176) Human Tagged Lenti ORF Clone

Product data:

Product Type:	Expression Plasmids
Product Name:	GLUT12 (SLC2A12) (NM_145176) Human Tagged Lenti ORF Clone
Tag:	Myc-DDK
Symbol:	GLUT12
Synonyms:	GLUT8; GLUT12
Mammalian Cell Selection:	Puromycin
Vector:	pLenti-C-Myc-DDK-P2A-Puro (PS100092)
E. coli Selection:	Chloramphenicol (34 ug/mL)
ORF Nucleotide Sequence:	The ORF insert of this clone is exactly the same as(RC209979).
Restriction Sites:	SgfI-MluI
Cloning Scheme:	

Cloning sites used for ORF Shuttling:



* The last codon before the Stop codon of the ORF.

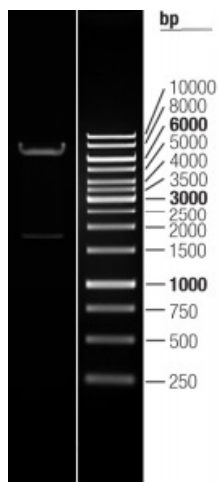
ACCN:	NM_145176
ORF Size:	1851 bp



[View online »](#)

OTI Disclaimer:	The molecular sequence of this clone aligns with the gene accession number as a point of reference only. However, individual transcript sequences of the same gene can differ through naturally occurring variations (e.g. polymorphisms), each with its own valid existence. This clone is substantially in agreement with the reference, but a complete review of all prevailing variants is recommended prior to use. More info
OTI Annotation:	This clone was engineered to express the complete ORF with an expression tag. Expression varies depending on the nature of the gene.
Components:	The ORF clone is ion-exchange column purified and shipped in a 2D barcoded Matrix tube containing 10ug of transfection-ready, dried plasmid DNA (reconstitute with 100 ul of water).
Reconstitution Method:	<ol style="list-style-type: none">1. Centrifuge at 5,000xg for 5min.2. Carefully open the tube and add 100ul of sterile water to dissolve the DNA.3. Close the tube and incubate for 10 minutes at room temperature.4. Briefly vortex the tube and then do a quick spin (less than 5000xg) to concentrate the liquid at the bottom.5. Store the suspended plasmid at -20°C. The DNA is stable for at least one year from date of shipping when stored at -20°C.
RefSeq:	NM_145176.2
RefSeq Size:	5599 bp
RefSeq ORF:	1854 bp
Locus ID:	154091
UniProt ID:	Q8TD20
Cytogenetics:	6q23.2
Domains:	sugar_tr
Protein Families:	Transmembrane
MW:	67 kDa
Gene Summary:	SLC2A12 belongs to a family of transporters that catalyze the uptake of sugars through facilitated diffusion (Rogers et al., 2002). This family of transporters show conservation of 12 transmembrane helices as well as functionally significant amino acid residues (Joost and Thorens, 2001 [PubMed 11780753]).[supplied by OMIM, Mar 2008]

Product images:



Double digestion of RC209979L3 using SgfI and MluI