

Product datasheet for **RC209964**

SPARC (NM_003118) Human Tagged ORF Clone

Product data:

Product Type:	Expression Plasmids
Product Name:	SPARC (NM_003118) Human Tagged ORF Clone
Tag:	Myc-DDK
Symbol:	SPARC
Synonyms:	BM-40; OI17; ON; ONT
Mammalian Cell Selection:	Neomycin
Vector:	pCMV6-Entry (PS100001)
E. coli Selection:	Kanamycin (25 ug/mL)
ORF Nucleotide Sequence:	>RC209964 ORF sequence Red=Cloning site Blue=ORF Green=Tags(s)

TTTGTGTAATACGACTCACTATAGGGCGGCCGGAATTCGTCGACTGGATCCGGTACCGAGGAGATCTGCC
GCC**CGATCGCC**

ATGAGGGCCTGGATCTTCTTTCTCCTTTGCCTGGCCGGGAGGCGCTTGGCAGCCCTCAGCAAGAAGCCC
TGCCTGATGAGACAGAGGTGGTGAAGAACTGTGGCAGAGGTGACTGAGGTATCTGTGGGAGCTAATCC
TGTCAGGTGGAAGTAGGAGAATTTGATGATGGTGCAGAGGAAACCGAAGAGGAGGTGGTGGCGGAAAT
CCCTGCCAGAACCACCACTGCAACACGGCAAGGTGTGCGAGCTGGATGAGAACAACACCCCATGTGCG
TGTGCCAGGACCCACCACTGCCAGCCCCATTGGCGAGTTTGAGAAGGTGTGCAGCAATGACAACAA
GACCTTCGACTCTTCTGCCACTTCTTTGCCACAAAGTGACCCCTGGAGGGCACCAAGAAGGCCACAAG
CTCCACCTGGACTACATCGGGCCTTGCAAATACATCCCCCTTGCTGGACTCTGAGCTGACCGAATTCC
CCCTGCGCATGCGGGACTGGCTCAAGAAGTCCTGGTCACCTGTATGAGAGGGATGAGGACAACAACCT
TCTGACTGAGAAGCAGAAGCTGCGGGTGAAGAAGATCCATGAGAATGAGAAGCGCCTGGAGGCAGGAGAC
CACCCCGTGGAGCTGCTGGCCGGGACTTCGAGAAGAACTATAACATGTACATCTTCCCTGTACTGTGC
AGTTCGGCCAGCTGGACCAGCACCCATTGACGGGTACCTCTCCACACCGAGCTGGCTCCACTGCGTGC
TCCCTCATCCCATGGAGCATTGCACCACCGCTTTTCGAGACCTGTGACCTGGACAATGACAAGTAC
ATCGCCCTGGATGAGTGGCCGGCTGCTTCGGCATCAAGCAGAAGGATATCGACAAGGATCTTGTGATC

ACGCGTACGCGGGCGCTCGAGCAGAACTCATCTCAGAAGAGGATCTGGCAGCAATGATATCCTGGATT
ACAAGGATGACGACGATAAGGTTTAA



[View online »](#)

Protein Sequence: >RC209964 protein sequence
 Red=Cloning site Green=Tags(s)

MRAWIFFLLCLAGRALAAPQQEALPDETEVVEETVAEVTEVSVGANPVQVEVGEFDDGAEETEEVVAEN
 PCQNHCKHKGKVCELDENNTPMCVCQDPTSCPAPIGEFEKVCSDNKTDFDSSCHFFATKCTLEGTKKGHK
 LHLDYIGPCKYIPCLDSELTFFPLMRDWLKNVLVTLYERDEDNLLTEKQKL RVKKIHENEKRL EAGD
 HPVELLARDFEKNYNMYIFPVHWQFGQLDQHPIDGYLSHTELAPLRAPLIPMEHCTTRFFETCDLDNDKY
 IALDEWAGCGFIKQKDIDKDLVI

TRTRPLEQKLISEEDLAANDILDYKDDDDKV

Restriction Sites: SgfI-MluI

Cloning Scheme:



ACCN: NM_003118

ORF Size: 909 bp

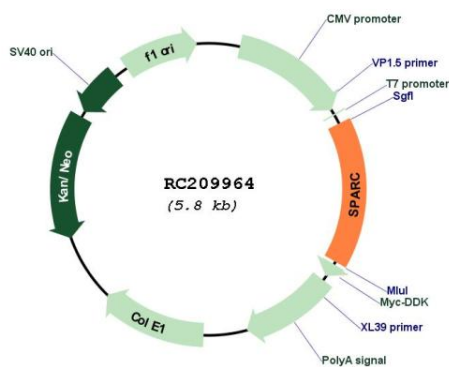
OTI Disclaimer: Due to the inherent nature of this plasmid, standard methods to replicate additional amounts of DNA in E. coli are highly likely to result in mutations and/or rearrangements. Therefore, OriGene does not guarantee the capability to replicate this plasmid DNA. Additional amounts of DNA can be purchased from OriGene with batch-specific, full-sequence verification at a reduced cost. Please contact our customer care team at custsupport@origene.com or by calling 301.340.3188 option 3 for pricing and delivery.

The molecular sequence of this clone aligns with the gene accession number as a point of reference only. However, individual transcript sequences of the same gene can differ through naturally occurring variations (e.g. polymorphisms), each with its own valid existence. This clone is substantially in agreement with the reference, but a complete review of all prevailing variants is recommended prior to use. [More info](#)

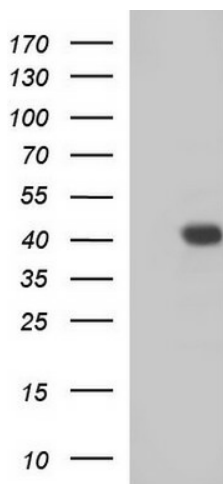
OTI Annotation: This clone was engineered to express the complete ORF with an expression tag. Expression varies depending on the nature of the gene.

Components:	The ORF clone is ion-exchange column purified and shipped in a 2D barcoded Matrix tube containing 10ug of transfection-ready, dried plasmid DNA (reconstitute with 100 ul of water).
Reconstitution Method:	<ol style="list-style-type: none"> 1. Centrifuge at 5,000xg for 5min. 2. Carefully open the tube and add 100ul of sterile water to dissolve the DNA. 3. Close the tube and incubate for 10 minutes at room temperature. 4. Briefly vortex the tube and then do a quick spin (less than 5000xg) to concentrate the liquid at the bottom. 5. Store the suspended plasmid at -20°C. The DNA is stable for at least one year from date of shipping when stored at -20°C.
Note:	Plasmids are not sterile. For experiments where strict sterility is required, filtration with 0.22um filter is required.
RefSeq:	NM_003118.4
RefSeq Size:	3604 bp
RefSeq ORF:	912 bp
Locus ID:	6678
UniProt ID:	P09486
Cytogenetics:	5q33.1
Domains:	kazal, FOLN
Protein Families:	Druggable Genome
MW:	34.6 kDa
Gene Summary:	This gene encodes a cysteine-rich acidic matrix-associated protein. The encoded protein is required for the collagen in bone to become calcified but is also involved in extracellular matrix synthesis and promotion of changes to cell shape. The gene product has been associated with tumor suppression but has also been correlated with metastasis based on changes to cell shape which can promote tumor cell invasion. Three transcript variants encoding different isoforms have been found for this gene. [provided by RefSeq, Jun 2015]

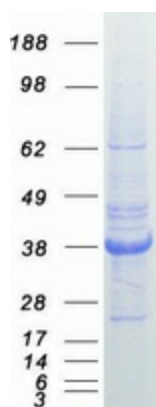
Product images:



Circular map for RC209964



HEK293T cells were transfected with the pCMV6-ENTRY control (Cat# [PS100001], Left lane) or pCMV6-ENTRY SPARC (Cat# RC209964, Right lane) cDNA for 48 hrs and lysed. Equivalent amounts of cell lysates (5 ug per lane) were separated by SDS-PAGE and immunoblotted with anti-SPARC (Cat# [TA507357]). Positive lysates [LY418873] (100ug) and [LC418873] (20ug) can be purchased separately from OriGene.



Coomassie blue staining of purified SPARC protein (Cat# [TP309964]). The protein was produced from HEK293T cells transfected with SPARC cDNA clone (Cat# RC209964) using MegaTran 2.0 (Cat# [TT210002]).