

Product datasheet for RC209963

ATPAF1 (NM_022745) Human Tagged ORF Clone

Product data:

Product Type:	Expression Plasmids
Product Name:	ATPAF1 (NM_022745) Human Tagged ORF Clone
Tag:	Myc-DDK
Symbol:	ATPAF1
Synonyms:	ATP11; ATP11p
Mammalian Cell Selection:	Neomycin
Vector:	pCMV6-Entry (PS100001)
E. coli Selection:	Kanamycin (25 ug/mL)
ORF Nucleotide Sequence:	>RC209963 ORF sequence Red=Cloning site Blue=ORF Green=Tags(s)

TTTTGTAATACGACTCACTATAGGGCGGCCGGAATTCGTCGACTGGATCCGGTACCGAGGAGATCTGCC
GCC**CGATCGCC**

ATGGCTGCTGTGGTGGTGGCGGCTGCGGGTGGCGGGACCGCGGTCTGCAGGTGGCCGGTCTTACC
GGGGCTGTGCGCGGTGCGCAGCCGCGCCTGGGCTGGGGCTCGTGTACCCGCGCAGCTGCGCGTCTT
CCCAGTGCGCCCGGCTCGGGCCGGCCGAGGGGGCGCCGACGGCAGCGGGTGGGGCCGAGGCCGAG
CTCCAGGCCAACCTTTCTACGACCGCTACCGGACAAGATCCAGCTGCTGCGCAGGTGAGCCAGCTG
CTTTTGTAGTCCCGCTGGAGAAACGAGTGAATTCGGAAGCAGCCAGTGGGGCATTCCAGGCAAGTGA
TTTTATCAAATGTGTGGAACAGAAGACAGATGCCTTGGGAAACAGTCTGTGAACAGAGGATCACTAAG
GACAAGACTCTCAGTTCAATCTTTAACATTGAGATGGTAAAAGAAAAACTGCAGAAGAAATAAACAGA
TTTGGCAGCAATATTTGCAGCAAAAGATACAGTCTACGAGTTATTCCTGCAGAAAAGTTTGATTTGAT
CTGGAACCGGGCTCAGTCTGTCCAACATTTCTATGTGCTCTGCCAAGAAGGAAGGTTATGAGTTTTT
GTAGGACAATGGACAGTACTGAACTCCACTTCACTGCACTTATAAATATTCAGACCCGAGGGGAAGCTG
CAGCCAGCCAGCTGATTTTATACACTATCCTGAACTTAAAGGAAGAAAAGGCATAGTGTGATGACTGC
AGAAATGGATTCCACATTTCTGAATGTTGCTGAGGCACAGTGCATCGCCAACCAAGTTCAGCTCTTCTAC
GCTACTGATCGGAAAGAGACCTACGGTTAGTGGAGACCTTAACTCAGACCAATGAGTTCAAATATA
TGCTGTGATCGCTGAATTGGAGCAAAGCGGACTTGGAGCAGAAGTAAATGTGCCAGAACCAAAATAA
GACT

ACGCGTACGCGGCCGCTCGAGCAGAACTCATCTCAGAAGAGGATCTGGCAGCAATGATATCCTGGATT
ACAAGGATGACGACGATAAGGTTTAA



[View online »](#)

Protein Sequence: >RC209963 protein sequence
Red=Cloning site Green=Tags(s)

MAAVVVAAGGAGPAVLQVAGLYRGLCAVRSRALGLVSPAQLRVFPVRPGSGRPEGADGSGVGAEAE
 LQANPFYDRYDKIQLLRSDPAAFESRLEKRSEFRKQPVGHSRQGDFIKCVEQKTDALGKQSVNRGFTK
 DKTLSSIFNIEMVKEKTAEEIKQIWQQYFAAKDTVYAVIPAEEKFDLIWNRAQSCPTFLCALPRREGYEFF
 VGQWTGTELHFTALINIQTRGEAAASQLILYHYPELKEEKGIVLMTAEMDSTFLNVAEAQCIANQVQLFY
 ATDRKETYGLVETFNLRPNEFKYMSVIAELEQSGLGAELKCAQNQNK

TRTRPLEQKLISEEDLAANDILDYKDDDDKV

Chromatograms: https://cdn.origene.com/chromatograms/mk6281_h03.zip

Restriction Sites: SgfI-MluI

Cloning Scheme:



ACCN: NM_022745

ORF Size: 984 bp

OTI Disclaimer: The molecular sequence of this clone aligns with the gene accession number as a point of reference only. However, individual transcript sequences of the same gene can differ through naturally occurring variations (e.g. polymorphisms), each with its own valid existence. This clone is substantially in agreement with the reference, but a complete review of all prevailing variants is recommended prior to use. [More info](#)

OTI Annotation: This clone was engineered to express the complete ORF with an expression tag. Expression varies depending on the nature of the gene.

Components: The ORF clone is ion-exchange column purified and shipped in a 2D barcoded Matrix tube containing 10ug of transfection-ready, dried plasmid DNA (reconstitute with 100 ul of water).

Reconstitution Method:

1. Centrifuge at 5,000xg for 5min.
2. Carefully open the tube and add 100ul of sterile water to dissolve the DNA.
3. Close the tube and incubate for 10 minutes at room temperature.
4. Briefly vortex the tube and then do a quick spin (less than 5000xg) to concentrate the liquid at the bottom.
5. Store the suspended plasmid at -20°C. The DNA is stable for at least one year from date of shipping when stored at -20°C.

RefSeq: [NM_022745.2](#), [NP_073582.1](#)

RefSeq Size: 1849 bp

RefSeq ORF: 1056 bp

Locus ID: 64756

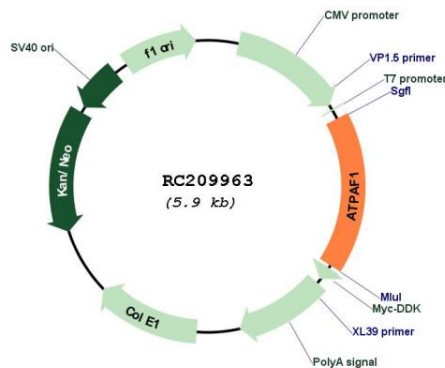
UniProt ID: [Q5TC12](#)

Cytogenetics: 1p33

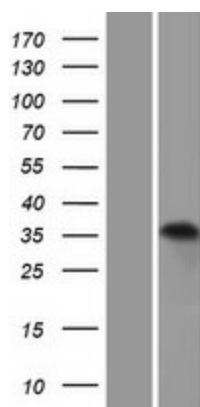
MW: 36.4 kDa

Gene Summary: This gene encodes an assembly factor for the F(1) component of the mitochondrial ATP synthase. This protein binds specifically to the F1 beta subunit and is thought to prevent this subunit from forming nonproductive homooligomers during enzyme assembly. Alternatively spliced transcript variants have been identified. [provided by RefSeq, Aug 2011]

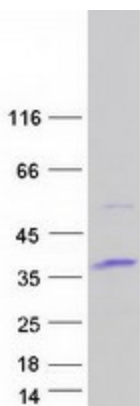
Product images:



Circular map for RC209963



Western blot validation of overexpression lysate (Cat# [LY411584]) using anti-DDK antibody (Cat# [TA50011-100]). Left: Cell lysates from untransfected HEK293T cells; Right: Cell lysates from HEK293T cells transfected with RC209963 using transfection reagent MegaTran 2.0 (Cat# [TT210002]).



Coomassie blue staining of purified ATPAF1 protein (Cat# [TP309963]). The protein was produced from HEK293T cells transfected with ATPAF1 cDNA clone (Cat# RC209963) using MegaTran 2.0 (Cat# [TT210002]).