

Product datasheet for **RC209960**

BICD2 (NM_001003800) Human Tagged ORF Clone

Product data:

Product Type:	Expression Plasmids
Product Name:	BICD2 (NM_001003800) Human Tagged ORF Clone
Tag:	Myc-DDK
Symbol:	BICD2
Synonyms:	bA526D8.1; SMALED2; SMALED2A; SMALED2B
Mammalian Cell Selection:	Neomycin
Vector:	pCMV6-Entry (PS100001)
E. coli Selection:	Kanamycin (25 ug/mL)



[View online »](#)

ORF Nucleotide Sequence:

>RC209960 representing NM_001003800
 Red=Cloning site Blue=ORF Green=Tags(s)

TTTTGTAATACGACTCACTATAGGGCGGCCGGGAATTCGTCGACTGGATCCGGTACCGAGGAGATCTGCC
 GCC**CGGATCGCC**

ATGTCGGCGCCGTCGGAGGAGGAGTACGCGCGGCTGGTGATGGAGGCGCAGCCGGAGTGGCTGCGCG
 CCGAGGTGAAGCGGCTGTCCACGAGCTGGCCGAGACCACGCGTGAGAAGATCCAGGCGGCCGAGTACGG
 GCTGGCGGTGCTCGAGGAGAAGCACCAGCTCAAGCTGCAGTTCGAGGAGCTCGAGGTGGACTATGAGGCT
 ATCCGCAGCGAGATGGAGCAGCTCAAGGAGGCCTTTGGACAAGCACACAAAACCACAAGAAGGTGGCTG
 CTGACGGAGAGAGCCGGGAGGAGCCTGATCCAGGAGTCGGCCTCCAAGGAGCAGTACTACGTGCGGAA
 GGTGCTAGAGCTGCAGACGGAGCTGAAGCAGTTGCGCAATGTCCTCACCAACACGCAGTCGGAGAATGAG
 CGCCTGGCCTCTGTGGCCAGGAGCTGAAGGAGATCAACCAGAATGTGGAGATCCAGCGTGGCCGCTGC
 GGGATGACATCAAGGAGTACAAATCCGGGAAGCTCGTCTGCTGCAGGACTACTCGGAACTGGAGGAGGA
 GAACATCAGCCTGCAGAAGCAAGTGTCTGTGCTCAGACAGAACCAGGTGGAGTTTGGGGCCTCAAGCAT
 GAGATCAAGCGTCTGGAGGAGGAGACCGAGTACCTCAACAGCCAGCTGGAGGATGCCATCCGCCTCAAGG
 AGATCTCAGAGCGGCAGCTGGAGGAGGCGCTGGAGACCCTGAAGACGGAGCGCAACAGAGAAGCAGCCT
 GCGCAAGGAGCTGTCACTACATGAGCATCAATGACTCCTTCTACACCAGCCACCTGCATGTCTCGCTG
 GATGGCCTCAAGTTCAGTGACGATGCTGCCGAGCCCAACAACGATGCCGAGGCCCTGGTCAATGGCTTTG
 AGCACGGCGCCCTGGCCAAGTGCCACTGGACAACAAGACCTCCACGCCCAAGAAGGAGGGCCTCGCACC
 GCCCTCCCCAGCCTCGTCTCCGACCTACTCAGTGAGCTCAACATCTCTGAGATCCAGAAGCTGAAGCAG
 CAGTGATGCAGATGGAGCGGGAAAAGCGGGCCTGCTGGCAACGCTGCAGGACACACAGAAGCAGCTGG
 AGCACAGCGGGGCTCCTGTGACAACAGCAGGAGAAGGTGACCCGCTCACAGAGAATCTGAGTGCCCT
 GCGGCGCTGCAGGCCAGCAAGGAGCGCAGACAGCCCTGGACAACGAGAAGGACCGTGACAGCCATGAG
 GATGGGGACTACTACGAGGTGGACATCAACGGGCTGAGATCTTGGCCTGCAAGTACCATGTGGCTGTGG
 CTGAGGCTGGCGAGCTCCGCGAGCAGCTCAAGGCACTGCGCAGCACGCACGAGGCTCGTGGGCCAGCA
 CGCCGAGGAGAAGGGCCGCTATGAGGCTGAGGGCCAGGCACTCACGGAGAAGGTCTCCCTGCTAGAGAAG
 GCCAGCCGCCAGGACCGCAGCTGTGGCCCGGCTGGAGAAGGAGCTAAAGAAGGTGAGCGACGTGCGCC
 GCGAGACACAGGGCAGCCTGAGTGTGGCCAGGATGAGCTGGTGACCTTCAAGTGGAGGCTGGCCAACT
 CTACCACCAGTGTGCATGTGCAACAATGAGACACCAACCGTGTGATGCTGGACTACTACCGGAGGGC
 CAGGGCGGGCCGGCCGACAGTCCCAGGGCCGACACAGCCCGAGGCGCGTGGCCGGCGCTCACCCA
 TCCTCCTACCCAAGGGGCTGCTGGCTCCTGAGGCGGGCCGAGCAGATGGTGGGACGGGGACAGCAGCCC
 CTCGCCTGGCTCCTCACTGCCATCACCCCTGAGTGACCCACGCCGGGAGCCCATGAACATCTACAACCTG
 ATCGCTATCATCCGTGACCAGATCAAGCACCTGCAGGCAGCCGTGGACCGCACCACGGAGCTGTCACGCC
 AGCGCATTGCCTCTCAGGAGCTGGGCCCGCCGTGGACAAGGACAAGGAAGCGCTTATGGAGGAGATCCT
 CAAGCTGAAGTCGCTGCTCAGCACCAAGCGGGAGCAGATCACACGCTGCGCACTGTGCTCAAGGCCAAC
 AAGCAGACGGCCGAGGTGGCCCTTGCCAACCTGAAGAGCAAGTATGAGAATGAGAAGGCCATGGTTACCG
 AGACATGATGAAGCTGCGCAATGAGCTCAAGGCCCTCAAGGAGGACGCAGCCACCTTCTCCTCGCTGCG
 TGCTATGTTTGGCACCAGGTGTGACGAGTACATTACACAGCTGGATGAGATGCAGCGGCAGCTGGCGGCT
 GCTGAGGACGAGAAGAAGACGCTGAACCTGCTGCTGCGCATGGCCATCCAGCAGAAGCTGGCGCTGACCC
 AGCGGCTGGAGCTGCTCGAGCTGGACCATGAGCAGACCCGGCGTGGCCGTGCCAAAGCCGCCCGAAGAC
 CAAGCCAGCCACACCGAGCGTAAGTACACCTGTGCCTGTGCCAGCGACAGGGCCGAGGGCACCGGGCTG
 GCCAACAGGTGTTCTGCAGCGAGAAGCACAGCATTTACTGTGAT

AG**CGGACCG**ACGCGTACGCGGCCGCTCGAGCAGAACTCATCTCAGAAGAGGATCTGGCAGCAAATGATATCC
 TGGATTACAAGGATGACGACGATAAGGTTTAA

Protein Sequence: >RC209960 representing NM_001003800
 Red=Cloning site Green=Tags(s)

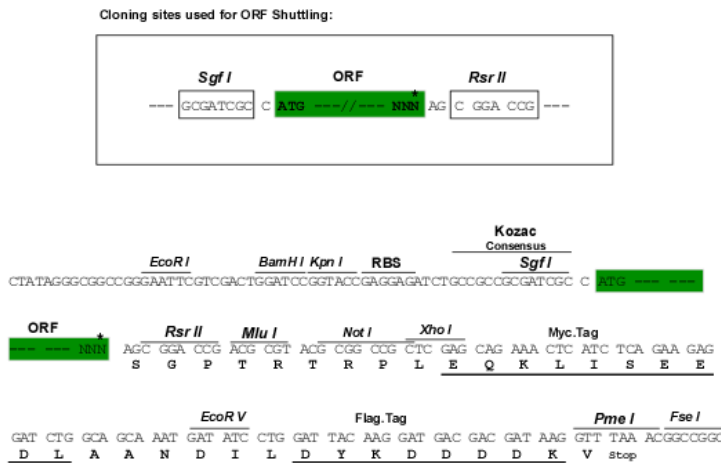
MSAPSEEEYARLVMEAPPEWLRAEVKRLSHELAETTREKIQAEEYGLAVLEEKHQLKLFEELEVDYEA
 IRSEMEQLKEAFGOAHTNHKKVAADGESREESLIQESASKEQYVVRKVLLELQTELKQLRNVLTNTQSENE
 RLASVAQELKEINQNVETQGRRLRDDIKEYKFRARLLQDYSELEENISLQKQVSVLRQNVQVEFGLKH
 EIKRLEEETEYLNQLEDAIRLKEISERQLEEALETLKTEREQKNSLRKELSHYMSINDSFYTSHLHVSL
 DGLKFSDDAAEPNDAEALVNGFEHGGLAKPLDNKTSTPKKEGLAPPSPLVSDLLSELNISEIQKLLKQ
 QLMQMEREKAGLLATLQDTQKQLEHTRGSLSEQQEKVTRLTENLSALRRLQASKERQTALDNEKDRDSHE
 DGDYEEVDINGPEILACKYHVAVAEAGELREQLKALRSTHEAREAQAHEEKGRYEAEGQALTEKVSLLK
 ASRQDRELLARLEKELKKVSDVAGETQGSLSVAQDELVTFSEELANLYHHVCMCNNETPNRVMLDYYREG
 QGGAGRTSPGGRTSPEARGRSPILLPKGLLAPEAGRADGGTGDSSSPGSSLPSPSDPRREPMMIYNL
 IAIIRDQIKHLQAAVDRTEL SRQRIASQELGPAVDKDKKEALMEEILKLSLLSTKREQITTLRTVLKAN
 KQTAEVALANLKSKEYENKAMVTETMMKLRNELKALKEDAATFSSLRAMFATRCDEYITQLDEMQRQLAA
 AEDEKKTLSLLRMAIQKLLAL TQRLELLELDHEQTRRGRAKAAPKTKPATPSVSHTCACASDRAEGTGL
 ANQVFCSEKHSIYCD

SGPTRRRLRLEQKLI SEEDLAANDILDYKDDDDKV

Restriction Sites:

SgfI-RsrII

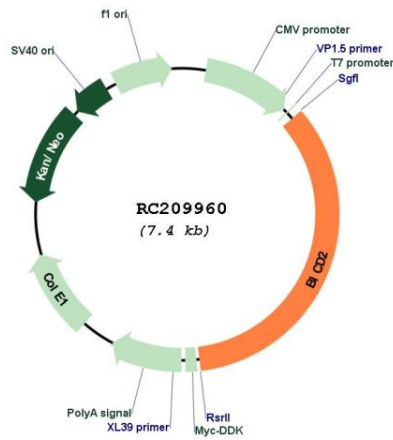
Cloning Scheme:



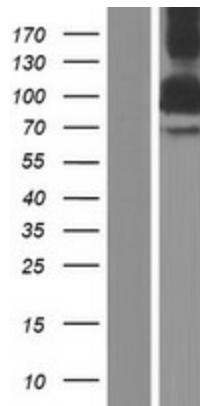
* The last codon before the Stop codon of the ORF

ACCN:	NM_001003800
ORF Size:	2565 bp
OTI Disclaimer:	<p>Due to the inherent nature of this plasmid, standard methods to replicate additional amounts of DNA in E. coli are highly likely to result in mutations and/or rearrangements. Therefore, OriGene does not guarantee the capability to replicate this plasmid DNA. Additional amounts of DNA can be purchased from OriGene with batch-specific, full-sequence verification at a reduced cost. Please contact our customer care team at custsupport@origene.com or by calling 301.340.3188 option 3 for pricing and delivery.</p> <p>The molecular sequence of this clone aligns with the gene accession number as a point of reference only. However, individual transcript sequences of the same gene can differ through naturally occurring variations (e.g. polymorphisms), each with its own valid existence. This clone is substantially in agreement with the reference, but a complete review of all prevailing variants is recommended prior to use. More info</p>
OTI Annotation:	This clone was engineered to express the complete ORF with an expression tag. Expression varies depending on the nature of the gene.
Components:	The ORF clone is ion-exchange column purified and shipped in a 2D barcoded Matrix tube containing 10ug of transfection-ready, dried plasmid DNA (reconstitute with 100 ul of water).
Reconstitution Method:	<ol style="list-style-type: none"> 1. Centrifuge at 5,000xg for 5min. 2. Carefully open the tube and add 100ul of sterile water to dissolve the DNA. 3. Close the tube and incubate for 10 minutes at room temperature. 4. Briefly vortex the tube and then do a quick spin (less than 5000xg) to concentrate the liquid at the bottom. 5. Store the suspended plasmid at -20°C. The DNA is stable for at least one year from date of shipping when stored at -20°C.
RefSeq:	NM_001003800.2
RefSeq Size:	6433 bp
RefSeq ORF:	2568 bp
Locus ID:	23299
UniProt ID:	Q8TD16
Cytogenetics:	9q22.31
MW:	96.6 kDa
Gene Summary:	This gene is one of two human homologs of Drosophila bicaudal-D and a member of the Bicoid family. It has been implicated in dynein-mediated, minus end-directed motility along microtubules. It has also been reported to be a phosphorylation target of NIMA related kinase 8. Two alternative splice variants have been described. [provided by RefSeq, Jul 2008]

Product images:



Circular map for RC209960



Western blot validation of overexpression lysate (Cat# [LY424013]) using anti-DDK antibody (Cat# [TA50011-100]). Left: Cell lysates from untransfected HEK293T cells; Right: Cell lysates from HEK293T cells transfected with RC209960 using transfection reagent MegaTran 2.0 (Cat# [TT210002]).