

## Product datasheet for **RC209958**

### CHAD (NM\_001267) Human Tagged ORF Clone

#### Product data:

**Product Type:** Expression Plasmids  
**Product Name:** CHAD (NM\_001267) Human Tagged ORF Clone  
**Tag:** Myc-DDK  
**Symbol:** CHAD  
**Synonyms:** SLRR4A  
**Mammalian Cell Selection:** Neomycin  
**Vector:** pCMV6-Entry (PS100001)  
**E. coli Selection:** Kanamycin (25 ug/mL)  
**ORF Nucleotide Sequence:** >RC209958 ORF sequence  
Red=Cloning site Blue=ORF Green=Tags(s)

TTTTGTAATACGACTCACTATAGGGCGGCCGGAATTCGTCGACTGGATCCGGTACCGAGGAGATCTGCC  
GCC**CGATCGCC**

ATGGTCCGCCAATGCTCTTGCTCAGCCTCGGCCTCCTGGCTGGTCTGCTGCCGGCGCTGGCCGCCTGCC  
CCCAGAAGTCCACTGCCACAGCAGCTGCAGCACGTCTGCGACAAGGTGGGGCTGCAGAAGATCCC  
CAAGGTGTGAGAGAAGACCAAGCTGCTCAACCTACAGCGCAACAACCTCCCGGTGCTGGCTGCCAATTCG  
TTCCGGGCCATGCCGAACCTCGTGTATTGACCTGCAGCACTGCCAGATCCGCGAGGTGGCCGCCGGTG  
CCTTCCGGCCCTCAAGCAACTTATCTACTTGTACCTGTCCATAACGACATCCGCGTGTGCGCGCAGG  
TGCTTTCGACGACCTGACCGAGCTGACCTACCTACCTGGACCACAACAAGGTCACTGAGCTGCCCGG  
GGTTGCTCTCCCGCTGGTCAACCTCTTCATCTTGCAGCTCAACAACAACAAGTCCGTGAGCTGCGCG  
CAGGCGCCTTCCAGGGAGCCAAGGACCTGCGCTGGCTCTACCTGTGCGAAAACGCGTTGAGCTCCCTGCA  
GCCCCGGGGCCCTGGACGATGTGGAGAACCTCGCCAAATTCACGTGGACAGGAACCCAGCTGTCCAGCTAC  
CCCTCAGCTGCCCTGAGCAAGCTACGGGTGGTGGAGGAGCTGAAGCTGTCCACAACCCCTGAAAAGCA  
TCCCGGACAATGCCTTCCAGTCTTTGGCAGATACCTGGAGACCTCTGGCTGGACAACCAACCTGGA  
GAAGTTCTCAGATGGTGCCTTCTGGGTGTAACCACGCTGAAACACGTCCATTTGGAGAACAACCCGTTG  
AACCAGCTACCCTCAACTTCCCTTTCGACAGCCTGGAGACCTCGCCCTTACCAATAACCCCTGGAAGT  
GTACCTGCCAGCTCCGGGGCCTTCGGCGGTGGCTGGAAGCCAAGGCCTCCCGCCAGATGCCACCTGTGC  
CTCACCTGCCAAGTTCAAGGGCCAGCACATCCGTGACACGGACGCCTCCGCAGCTGCAAGTTCCCACC  
AAGAGTCCAAGAAAGCTGGCCGCAT

AG**CGGACCG**ACGCGTACGCGGCCGCTCGAGCAGAACTCATCTCAGAAGAGGATCTGGCAGCAAATGATATCC  
TGGATTACAAGGATGACGACGATAAGGTTAA



[View online »](#)

**Protein Sequence:** >RC209958 protein sequence  
Red=Cloning site Green=Tags(s)

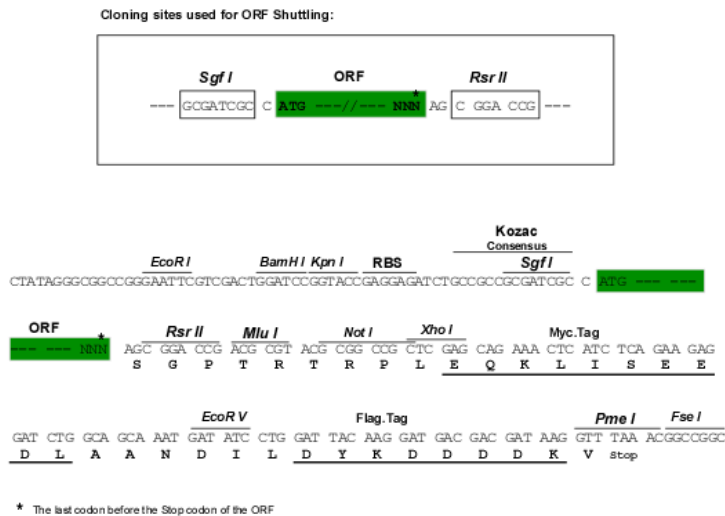
MVRPMLLLSLGLLAGLLPALAACPNCHCHSDLQHVICDKVGLQKIPKVSEKTKLLNLQRNFPVLAANS  
 FRAMPNLVSLHLQHCQIREVAAGAFRGLKQLIYL YL SHNDIRVLRAGAFDDL TEL TYL YLDHNKVT EL PR  
 GLLSPLVNLFI LQLN NNI IREL RAGAFQ GAKDLR WLYL SENAL SSLQPGALDDVENLAKFHVDRNQLSSY  
 PSAALSKLRVVEELKLSHNPLKSI PDNAFQSFGRYLETLWLDNTNLEKFS DGAF LGVTTLLKHVHLENNRL  
 NQLPSNFPFDSLETLAL TNNPWKCTCQLRGLRRWLEAKASRPDATCASPAKFKGQHIRDTDAFRSCKFPT  
 KRSKKAGRH

SGPTRTRPLEQKLI SEEDLAANDILDYKDDDDKV

**Chromatograms:** [https://cdn.origene.com/chromatograms/mk6620\\_e10.zip](https://cdn.origene.com/chromatograms/mk6620_e10.zip)

**Restriction Sites:** SgfI-RsrII

**Cloning Scheme:**



**ACCN:** NM\_001267

**ORF Size:** 1077 bp

**OTI Disclaimer:** The molecular sequence of this clone aligns with the gene accession number as a point of reference only. However, individual transcript sequences of the same gene can differ through naturally occurring variations (e.g. polymorphisms), each with its own valid existence. This clone is substantially in agreement with the reference, but a complete review of all prevailing variants is recommended prior to use. [More info](#)

**OTI Annotation:** This clone was engineered to express the complete ORF with an expression tag. Expression varies depending on the nature of the gene.

**Components:** The ORF clone is ion-exchange column purified and shipped in a 2D barcoded Matrix tube containing 10ug of transfection-ready, dried plasmid DNA (reconstitute with 100 ul of water).

**Reconstitution Method:**

1. Centrifuge at 5,000xg for 5min.
2. Carefully open the tube and add 100ul of sterile water to dissolve the DNA.
3. Close the tube and incubate for 10 minutes at room temperature.
4. Briefly vortex the tube and then do a quick spin (less than 5000xg) to concentrate the liquid at the bottom.
5. Store the suspended plasmid at -20°C. The DNA is stable for at least one year from date of shipping when stored at -20°C.

**RefSeq:** [NM\\_001267.3](#)

**RefSeq Size:** 1712 bp

**RefSeq ORF:** 1080 bp

**Locus ID:** 1101

**UniProt ID:** [O15335](#)

**Cytogenetics:** 17q21.33

**Domains:** LRRNT, LRRCT, LRR, LRR\_TYP, LRR\_PS

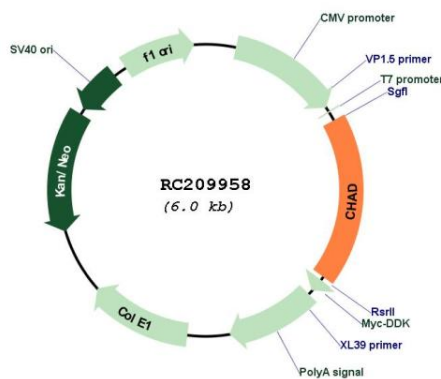
**Protein Families:** Secreted Protein

**Protein Pathways:** ECM-receptor interaction, Focal adhesion

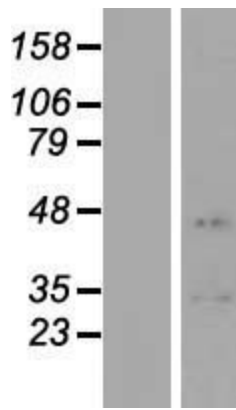
**MW:** 40.5 kDa

**Gene Summary:** Chondroadherin is a cartilage matrix protein thought to mediate adhesion of isolated chondrocytes. The protein contains 11 leucine-rich repeats flanked by cysteine-rich regions. The chondroadherin messenger RNA is present in chondrocytes at all ages. [provided by RefSeq, Jul 2008]

**Product images:**



Circular map for RC209958



Western blot validation of overexpression lysate (Cat# [LY420035]) using anti-DDK antibody (Cat# [TA50011-100]). Left: Cell lysates from untransfected HEK293T cells; Right: Cell lysates from HEK293T cells transfected with RC209958 using transfection reagent MegaTran 2.0 (Cat# [TT210002]).