

Product datasheet for RC209952

GJA4 (NM_002060) Human Tagged ORF Clone

Product data:

Product Type:	Expression Plasmids
Product Name:	GJA4 (NM_002060) Human Tagged ORF Clone
Tag:	Myc-DDK
Symbol:	GJA4
Synonyms:	CX37
Mammalian Cell Selection:	Neomycin
Vector:	pCMV6-Entry (PS100001)
E. coli Selection:	Kanamycin (25 ug/mL)
ORF Nucleotide Sequence:	>RC209952 ORF sequence Red=Cloning site Blue=ORF Green=Tags(s)

TTTTGTAATACGACTCACTATAGGGCGGCCGGAATTCGTCGACTGGATCCGGTACCGAGGAGATCTGCC
GCC**CGATCGCC**

ATGGGTGACTGGGGCTTCTGGAGAAGTTGCTGGACCAGGTCCAGGAGCACTCGACCGTGGTGGTAAGA
TCTGGCTGACGGTGTCTTCATCTTCCGCATCCTCATCTGGCCTGGCCGGCGAGTCAGTGTGGGGTGA
CGAGCAATCAGATTTGAGTGTAACACGGCCAGCCAGGCTGCACCAACGTCTGCTATGACCAGGCCTTC
CCCATCTCCACATCCGCTACTGGGTGCTGCAGTTCCTCTTCGTCAGCACACCCACCTGGTCTACCTGG
GCCATGTCATTTACCTGTCTCGGCGAGAAGAGCGGCTGCGGCAGAAGAGGGGGAGCTGCGGGCACTGCC
GGCCAAGGACCCACAGGTGGAGCGGGCGCTGGCGCCGTAGAGCGTCAGATGGCCAAGATCTCGGTGGCA
GAAGATGGTCGCCTGCGCATCCGCGGAGCACTGATGGGCACCTATGTCGCCAGTGTGCTCTGCAAGAGTG
TGCTAGAGGCAGGCTTCTCTATGGCCAGTGGCGCCTGTACGGCTGGACCATGGAGCCCGTGTGGTGTG
CCAGCGAGCACCCCTGCCCTACCTCGTGGACTGCTTTGTCTCTCGCCCCACGGAGAAGACCATCTTCATC
ATCTTCATGTTGGTGGTGGACTCATCTCCCTGGTGTAACTGCTGGAGTTGGTGCACCTGCTGTGTC
GCTGCCTCAGCCGGGGATGAGGGCACGGCAAGGCCAAGACGCACCCCGACCCAGGGCACCTCCTCAGA
CCCTTACACGGACCAGGTCTTCTTCTACCTCCCCGTGGCCAGGGGCCCTCATCCCCACCATGCCCCACC
TACAATGGGCTCTCATCCAGTGAGCAGAAGTGGCCAACCTGACCACAGAGGAGGCTGGCGTCTTCCA
GGCCCTCTCTTCTGGACCCACCCCTCAGAATGGCCAAAACCCCAAGTCGTCAGCAGCTCTGC
TTCTAAGAAGCAGTATGTA

ACGCGTACGCGGCCGCTCGAGCAGAACTCATCTCAGAAGAGGATCTGGCAGCAAATGATATCCTGGATT
ACAAGGATGACGACGATAAGGTTTAA



[View online »](#)

Protein Sequence: >RC209952 protein sequence
Red=Cloning site Green=Tags(s)

MGDWGFLEKLLDQVQEHSTVVGKIWLTVLFIFRILILGLAGESVWGDEQSDFEFCNTAQP GCTNVCYDQAF
 PISHIRYWVLQFLVSTPTLVYLGHVIYLSRREERLRQKEGELRALPAKDPQVERALAAVERQMAKISVA
 EDGRLRIRGALMGTYVASVLCKSVLEAGFLYQWRLYGWTMEPVFVCQRAPCPYLAVDCFVSRPTEKTIIFI
 IFMLVVGLISLVLNLELVHLLCRCLSRGMRARQGQDAPPTQGTSSDPYTDQVFFYLPVGGQGPSSPPCPT
 YNGLSSSEQNWANLTTEERLASSRPPLFLDPPPQNGQKPPSRPSSSASKKQYV

TRTRPLEQKLISEEDLAANDILDYKDDDDKV

Chromatograms: https://cdn.origene.com/chromatograms/mk6363_e05.zip

Restriction Sites: SgfI-MluI

Cloning Scheme:



ACCN: NM_002060

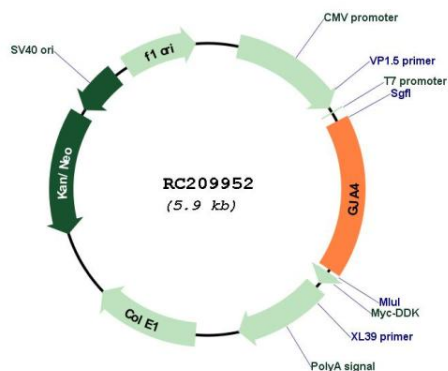
ORF Size: 999 bp

OTI Disclaimer: Due to the inherent nature of this plasmid, standard methods to replicate additional amounts of DNA in E. coli are highly likely to result in mutations and/or rearrangements. Therefore, OriGene does not guarantee the capability to replicate this plasmid DNA. Additional amounts of DNA can be purchased from OriGene with batch-specific, full-sequence verification at a reduced cost. Please contact our customer care team at custsupport@origene.com or by calling 301.340.3188 option 3 for pricing and delivery.

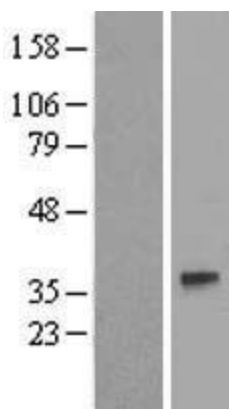
The molecular sequence of this clone aligns with the gene accession number as a point of reference only. However, individual transcript sequences of the same gene can differ through naturally occurring variations (e.g. polymorphisms), each with its own valid existence. This clone is substantially in agreement with the reference, but a complete review of all prevailing variants is recommended prior to use. [More info](#)

OTI Annotation:	This clone was engineered to express the complete ORF with an expression tag. Expression varies depending on the nature of the gene.
Components:	The ORF clone is ion-exchange column purified and shipped in a 2D barcoded Matrix tube containing 10ug of transfection-ready, dried plasmid DNA (reconstitute with 100 ul of water).
Reconstitution Method:	<ol style="list-style-type: none">1. Centrifuge at 5,000xg for 5min.2. Carefully open the tube and add 100ul of sterile water to dissolve the DNA.3. Close the tube and incubate for 10 minutes at room temperature.4. Briefly vortex the tube and then do a quick spin (less than 5000xg) to concentrate the liquid at the bottom.5. Store the suspended plasmid at -20°C. The DNA is stable for at least one year from date of shipping when stored at -20°C.
RefSeq:	NM_002060.3
RefSeq Size:	1710 bp
RefSeq ORF:	1002 bp
Locus ID:	2701
UniProt ID:	P35212
Cytogenetics:	1p34.3
Domains:	CNX
Protein Families:	Ion Channels: Other, Transmembrane
MW:	37.4 kDa
Gene Summary:	This gene encodes a member of the connexin gene family. The encoded protein is a component of gap junctions, which are composed of arrays of intercellular channels that provide a route for the diffusion of low molecular weight materials from cell to cell. Mutations in this gene have been associated with atherosclerosis and a higher risk of myocardial infarction. [provided by RefSeq, Jul 2008]

Product images:



Circular map for RC209952



Western blot validation of overexpression lysate (Cat# [LY419566]) using anti-DDK antibody (Cat# [TA50011-100]). Left: Cell lysates from untransfected HEK293T cells; Right: Cell lysates from HEK293T cells transfected with RC209952 using transfection reagent MegaTran 2.0 (Cat# [TT210002]).