

## Product datasheet for RC209950

### Prostaglandin I2 Receptor (PTGIR) (NM\_000960) Human Tagged ORF Clone

#### Product data:

Product Type:	Expression Plasmids
Product Name:	Prostaglandin I2 Receptor (PTGIR) (NM_000960) Human Tagged ORF Clone
Tag:	Myc-DDK
Symbol:	Prostaglandin I2 Receptor
Synonyms:	IP; PRIPR
Mammalian Cell Selection:	Neomycin
Vector:	pCMV6-Entry (PS100001)
E. coli Selection:	Kanamycin (25 ug/mL)
ORF Nucleotide Sequence:	>RC209950 ORF sequence Red=Cloning site Blue=ORF Green=Tags(s)

TTTTGTAATACGACTCACTATAGGGCGGCCGGAATTCGTCGACTGGATCCGGTACCGAGGAGATCTGCC  
GCC**CGATCGCC**

ATGGCGGATTCGTGCAGGAACCTCACCTACGTGCGGGCTCGGTGGGCGGCCACCAGCACCTGATGT  
TCGTGGCCGGTGTGGTGGCAACGGGCTGGCCCTGGGCATCCTGAGCGCACGGCGACCGCGCCCTC  
GGCCTTCGCGGTGCTGGTACCGGACTGGCGGCCACCGACTGCTGGGCACCAGCTTCTGAGCCC  
GTGTTTCGTGGCCTATGCGCGAACAGCTCCCTGCTGGGCTGGCCGAGGCGCCCGCCCTGTGCGAT  
CCTTCGCCTTCGCCATGACCTTCTTCGGCCTGGCGTCCATGCTCATCCTTTGCCATGGCCGTGGAGCG  
CTGCCTGGCGCTGAGCCACCCCTACCTCTACGCGCAGCTGGACGGCCCCGCTGCCCCCGCTGGCGCTG  
CCAGCCATCTACGCCTTCTGCGTCTTCTTCGCGCTGCCCTGCTGGGCTGGGCAACACCAGCAGT  
ACTGCCCGGCGAGCTGGTGTCTCCTCCGCATGCGCTGGGCCCAGCCGGCGGCGCCGCTTCTCGTGGC  
CTACGCCGGCCTGGTGGCCCTGCTGGTGGCTGCCATCTTCTCTGCAACGGCTCGGTACCCCTACGCCTC  
TGCCGCATGTACCGCCAGCAGAAGCGCCACCAGGGCTCTCTGGGTCCACGGCCGCGCACCGGAGAGGACG  
AGGTGGACCACCTGATCCTGCTGGCCCTCATGACAGTGGTTCATGGCCGTGTGCTCCCTGCCTCTCACGAT  
CCGCTGCTTACCCAGGCTGTGCCCCCTGACAGCAGCAGTGAGATGGGGACCTCCTTGCCTTCCGCTTC  
TACGCCTTCAACCCATCCTGGACCCCTGGGTCTTCATCCTTTCCGCAAGGCTGTCTCCAGCGACTCA  
AGCTCTGGGTCTGCTGCCTGTGCCTCGGGCTGCCACGGAGACTCGCAGACACCCCTTTCCAGCTCGC  
CTCCGGGAGGAGGACCAAGGGCCCCCTGCTCCTGTGGAAAGGAGGGAGCTGCGTGCCTTTGTCG  
GCTTGGGCGAGGGGAGGTGGAGCCCTTGCTCCACACAGCAGTCCAGCGGCAGCGCCGTGGAAACGT  
CGTCCAAAGCAGAAGCCAGCGTGCCTGCTCCCTGTC

**ACGCGT**ACGCGGCCGCTCGAGCAGAACTCATCTCAGAAGAGGATCTGGCAGCAATGATATCCTGGATT  
ACAAGGATGACGACGATAAGGTTTAA



[View online »](#)

**Protein Sequence:** >RC209950 protein sequence  
Red=Cloning site Green=Tags(s)

MADSCRNLTYVRGSVGPATSTLMFVAGVVGNGLALGILSARRPARPSAFVAVLVTGLAATDLLGTSFLSPA  
 VVYAYARNSSLLGLARGPALCDAFAFAMTFFGLASMLILFAMAVERCLALSHPYLYAQLDGPRCARLAL  
 PAIYAFVLFALPLLGLGQHQQYCPGWCFLMRWAQPGGAASLAYAGLVALLVAIIFLCNGSVTLSL  
 CRMYRQQKRHQGSLGPRPRTGEDEVHLLILLALMTVVMVAVCSLPLTIRCFVAVAPDSSSEMDDLAFRF  
 YAFNPILDWPWFILFRKAVFQRLKLVWVCLCLGPAHGDSTPLSQLASGRDRPRAPSAPVKGEGSCVPLS  
 AWGEGQVEPLPPTQSSGSAVGTSSKAEASVACSLC

TRTRPLEQKLISEEDLAANDILDYKDDDDKV

**Chromatograms:** [https://cdn.origene.com/chromatograms/mk6087\\_f11.zip](https://cdn.origene.com/chromatograms/mk6087_f11.zip)

**Restriction Sites:** SgfI-MluI

**Cloning Scheme:**



**ACCN:** NM\_000960

**ORF Size:** 1158 bp

**OTI Disclaimer:** The molecular sequence of this clone aligns with the gene accession number as a point of reference only. However, individual transcript sequences of the same gene can differ through naturally occurring variations (e.g. polymorphisms), each with its own valid existence. This clone is substantially in agreement with the reference, but a complete review of all prevailing variants is recommended prior to use. [More info](#)

**OTI Annotation:** This clone was engineered to express the complete ORF with an expression tag. Expression varies depending on the nature of the gene.

**Components:** The ORF clone is ion-exchange column purified and shipped in a 2D barcoded Matrix tube containing 10ug of transfection-ready, dried plasmid DNA (reconstitute with 100 ul of water).

**Reconstitution Method:**

1. Centrifuge at 5,000xg for 5min.
2. Carefully open the tube and add 100ul of sterile water to dissolve the DNA.
3. Close the tube and incubate for 10 minutes at room temperature.
4. Briefly vortex the tube and then do a quick spin (less than 5000xg) to concentrate the liquid at the bottom.
5. Store the suspended plasmid at -20°C. The DNA is stable for at least one year from date of shipping when stored at -20°C.

**RefSeq:** [NM\\_000960.1](#)

**RefSeq Size:** 2103 bp

**RefSeq ORF:** 1161 bp

**Locus ID:** 5739

**UniProt ID:** [P43119](#)

**Cytogenetics:** 19q13.32

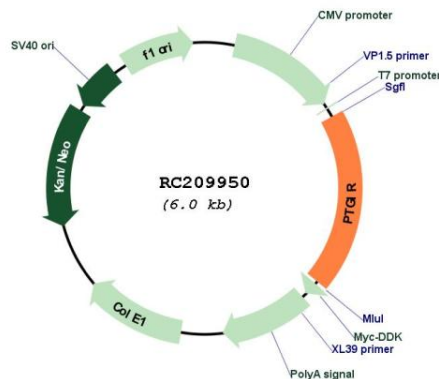
**Protein Families:** Druggable Genome, GPCR, Transmembrane

**Protein Pathways:** Neuroactive ligand-receptor interaction, Vascular smooth muscle contraction

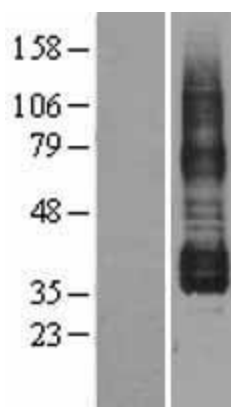
**MW:** 41 kDa

**Gene Summary:** The protein encoded by this gene is a member of the G-protein coupled receptor family 1 and has been shown to be a receptor for prostacyclin. Prostacyclin, the major product of cyclooxygenase in macrovascular endothelium, elicits a potent vasodilation and inhibition of platelet aggregation through binding to this receptor. [provided by RefSeq, Jul 2008]

### Product images:



Circular map for RC209950



Western blot validation of overexpression lysate (Cat# [LY400346]) using anti-DDK antibody (Cat# [TA50011-100]). Left: Cell lysates from untransfected HEK293T cells; Right: Cell lysates from HEK293T cells transfected with RC209950 using transfection reagent MegaTran 2.0 (Cat# [TT210002]).