

## Product datasheet for **RC209938**

### **FAM176B (EVA1B) (NM\_018166) Human Tagged ORF Clone**

#### Product data:

**Product Type:** Expression Plasmids  
**Product Name:** FAM176B (EVA1B) (NM\_018166) Human Tagged ORF Clone  
**Tag:** Myc-DDK  
**Symbol:** FAM176B  
**Synonyms:** C1orf78; FAM176B  
**Mammalian Cell Selection:** Neomycin  
**Vector:** pCMV6-Entry (PS100001)  
**E. coli Selection:** Kanamycin (25 ug/mL)  
**ORF Nucleotide Sequence:** >RC209938 ORF sequence  
Red=Cloning site Blue=ORF Green=Tags(s)

TTTTGTAATACGACTCACTATAGGGCGGCCGGAATTCGTCGACTGGATCCGGTACCGAGGAGATCTGCC  
GCC**CGATCGCC**

ATGGATGCCCCGGAAGGGACATGGAGTTGCTCAGCAACAGCCTGGCTGCCTACGCGCACATCCGCGCCA  
ACCCCGAGAGCTTCGGCCTCTACTTCGTGCTGGGCGTCTGCTTCGGCCTGCTGCTCACCCTCTGCCTGCT  
CGTCATCAGCATCTCGTGGGCGCCCCGCCGCGGCCCGGGCCCGGCTCAGCGCCGGGACCCCGCAGC  
AGCACCTGGAGCCCGAGGACGACGACGAGGACGAGGAGACACGGTACTCGGCTGGGCCCGGACGACA  
CGCTGCCGGGCCCGAGCTGTCCGAGAGCCGGACGGGCCCTCAACGTCAACGTCTTCAGTCGGCGGA  
GGAGCTGGAGCGGGCGCAGCGGCTGGAGGAGCGGAACGGATCCTGCGGGAGATCTGGCGCACCGGGCAG  
CCGGACCTGCTGGGCACAGGCACGCTGGGGCCAGCCCCACGGCCACGGGCACCCCTGGGCCGATGCACT  
ATTAC

**ACGCGT**ACGCGGCCGCTCGAGCAGAACTCATCTCAGAAGAGGATCTGGCAGCAAATGATATCCTGGATT  
ACAAGGATGACGACGATAAGGTTTAA

**Protein Sequence:** >RC209938 protein sequence  
Red=Cloning site Green=Tags(s)  
MDAPRRDMELLSNSLAAYAHIRANPESFGLYFVLGVCFGLLLTLCLLVISISWAPRPRPRGPAQRDRPRS  
STLEPEDDDEEDTVTRLGPDDTLPGPEL SAEPDGPLNVNFTSAEELERAQRLEERERILREIWRGQ  
PDLLGTGLGPSPTATGTLGRMHYY

**TRTRPLEQKLISEEDLAANDILDYKDDDDKV**

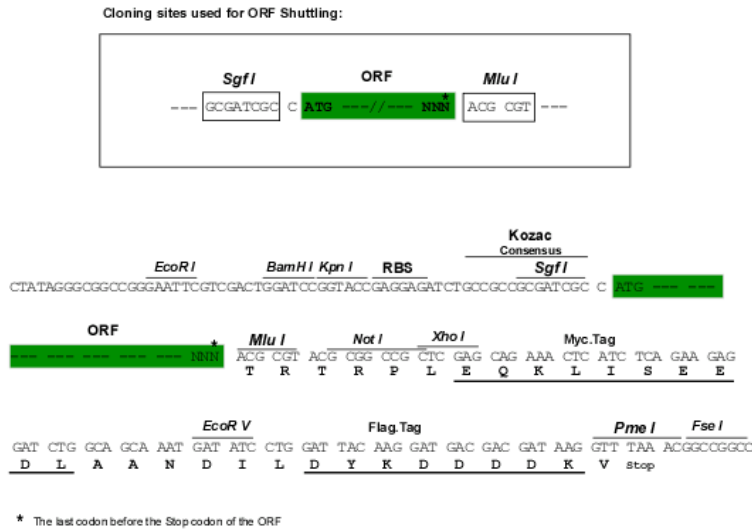
**Chromatograms:** [https://cdn.origene.com/chromatograms/mk6363\\_h05.zip](https://cdn.origene.com/chromatograms/mk6363_h05.zip)



[View online »](#)

Restriction Sites: SgfI-MluI

Cloning Scheme:



ACCN: NM\_018166

ORF Size: 495 bp

OTI Disclaimer: The molecular sequence of this clone aligns with the gene accession number as a point of reference only. However, individual transcript sequences of the same gene can differ through naturally occurring variations (e.g. polymorphisms), each with its own valid existence. This clone is substantially in agreement with the reference, but a complete review of all prevailing variants is recommended prior to use. [More info](#)

OTI Annotation: This clone was engineered to express the complete ORF with an expression tag. Expression varies depending on the nature of the gene.

Components: The ORF clone is ion-exchange column purified and shipped in a 2D barcoded Matrix tube containing 10ug of transfection-ready, dried plasmid DNA (reconstitute with 100 ul of water).

Reconstitution Method:

1. Centrifuge at 5,000xg for 5min.
2. Carefully open the tube and add 100ul of sterile water to dissolve the DNA.
3. Close the tube and incubate for 10 minutes at room temperature.
4. Briefly vortex the tube and then do a quick spin (less than 5000xg) to concentrate the liquid at the bottom.
5. Store the suspended plasmid at -20°C. The DNA is stable for at least one year from date of shipping when stored at -20°C.

RefSeq: [NM\\_018166.2](#)

RefSeq Size: 1054 bp

RefSeq ORF: 498 bp

Locus ID: 55194

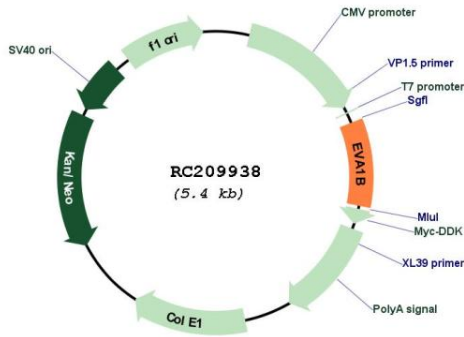
UniProt ID: [Q9NVM1](#)

Cytogenetics: 1p34.3

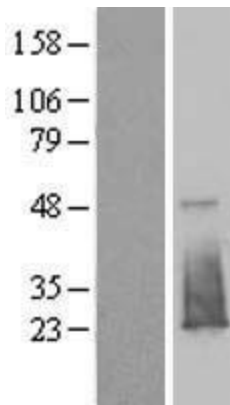
Protein Families: Transmembrane

MW: 18.4 kDa

**Product images:**



Circular map for RC209938



Western blot validation of overexpression lysate (Cat# [LY413263]) using anti-DDK antibody (Cat# [TA50011-100]). Left: Cell lysates from untransfected HEK293T cells; Right: Cell lysates from HEK293T cells transfected with RC209938 using transfection reagent MegaTran 2.0 (Cat# [TT210002]).