

## Product datasheet for **RC209937**

### ZNF839 (NM\_018335) Human Tagged ORF Clone

#### Product data:

Product Type:	Expression Plasmids
Product Name:	ZNF839 (NM_018335) Human Tagged ORF Clone
Tag:	Myc-DDK
Symbol:	ZNF839
Synonyms:	C14orf131
Mammalian Cell Selection:	Neomycin
Vector:	pCMV6-Entry (PS100001)
E. coli Selection:	Kanamycin (25 ug/mL)



[View online »](#)

**ORF Nucleotide Sequence:**

>RC209937 representing NM\_018335  
 Red=Cloning site Blue=ORF Green=Tags(s)

TTTTGTAATACGACTCACTATAGGGCGGCCGGGAATTCGTCGACTGGATCCGGTACCGAGGAGATCTGCC  
 GCC**CGGATCGCC**

ATGGCGGATGCGGAGCCGGAGGCTGGGGCGGCAGCGAGGATGGCGGCGGCGGCGGCGGCCGGCTCCTC  
 CGGGCCAGAGCGGCAGCGTCGCACGTGTGGCCCGCTGGGCCCGAGCAGCTGCGGCAGGTCTGGAGCA  
 GGTGACGAAGGCGCAGCCGCCCGCCGCCGCCCCCTTCGTGCTGCGGGACGCGGCGGCGGCTGCGG  
 GACGCGGCCAACAGGCCCTGCAGCGGGGCCGGGCACCGAGCCCCGCGCTGCCGCGCTGCTCC  
 CGCCCCAGCAACTAGAAGCCATTGTGTCAAGGTAACGTCTGGAGAAACAAAAGTCAAGAAAGGCCAAT  
 GCTCTACCGACCACAATCCAGCCCCAACTGCAAGAAAGAGCCAGCTGCCCGGGGAATTCTGCCTG  
 GTGGGGTCCATATGCCAGCCCTCAGCTGCTCAGGGTACAGCCGCTTGAGAACCAGCCACAGTCT  
 GCTTCTAAGTGACTTATGCCAACCTCCTGCTCAGGGGTTGTACAGAGACCCTGCCAGCCCTCCAGT  
 GGTCCCTGCAAGAGAGTCCCAGCCCCAAGGCTCCAGATGAACAGGGCTCCATGTTGACCCCTTTGTCT  
 GCCTCTGACCCGCTGGCAGTAACATCTCTTTCATCCAGTTCAGCACATCCATTTATTTCAAACCTGCATA  
 CAAGACATACTGAGAACTAAAAAATCGTTAAAAGTAAAGACACGTTCTGGACGGGTATCTCGACCTCC  
 CAAATATAAAGCTAAAGATTATAAGTTCATAAAAAAGAGGATCTGGCGGATGGTCATCTGTGAGATTCT  
 GATGATTACTCAGAACTGTGTGGAAGAAGATGAAGATCAGAGGGAGAGGCACGCACTCTTTGACTTAT  
 CGAGCTGCTCCCTGAGGCCAAAAGCTTAAAGTGTGAGTGTGAAAAGTCATATATAGGGAAGGGGG  
 ACTGGCCCCGACATTTTAACTTAACCCAGGCCACGGCCAGTTGGACCCGAGATGGTGTGTGAGAAA  
 GCCAGTGAAGCACCTCCGGGGGTGCACGGAGAAAGGACGCTCAGCCTGACCTCCCTGGGGTGTCCA  
 TGCCAGCGGATCCATGTGAGGGAGGGCCCGCTCCTGCTTGGTGACAGAGTCAAGCAGCGGTGCCATGCA  
 GAATGGTCAGTCTGTAGACGTTGAAGAGACATTGCCATCTGAACCAAGAAAATGGAGCTCTTTGCGATCA  
 GAGAGATACCAAGGACCTAGAAGACGCGCATGCTCAGAGACCCTTGCAGAGTCCCGCACAGCTGTCTCC  
 AGCAGAGAAGAGCTGCTCAGCTACCTGGTGGCCCTGCTGCGGCAGGGGAGCAGAGGGCGTCGCAAGCAA  
 AGCCAGGCTCAAGGAGTTCCTCCAGCAGTGTGACCGGGAGGATCTGGTGAATTGGCTCTGCCTCAGCTG  
 GCTCAGGTTGTGACCGTGTATGAGTTTCTTCTGATGAAGTTGAAAAAGATCATCTAGCAAAGCCTTTTT  
 TCCAGCTATATATAAGGAATTTGAAGAGTTGCATAAAATGGTTAAGAAAATGTGCCAAGATTACCTCAG  
 TAGTTCTGGTCTGTGTTCCAGGAGACCCTGAAATAAACAATGATAAGGTTGCTGAGTCATTAGGAATC  
 ACAGAATTCCTACGGAAGAAAGAAATACACCCAGACAACCTTGGACCCAAGCACCTCAGCCGAGACATGG  
 ATGGGGAGCAGCTAGAGGGAGCTAGCAGCGAGAAGAGGGAACGTGAGGCTGCGGAGGAGGGACTGGCCTC  
 AGTGAAGAGGCCAGAAGAGAAGCCCTGTCCAACGATACCACTGAATCTCTTGTGCCAACAGCAGAGGC  
 CGGGAGAAGCCCAGGCCCTTGCATGCTTTGGCCGCTGGTTTTTCCCTCCAGTAAATGTGACTGTCTCTC  
 CCCGTTCTGAAGAAAGCCATACAACGACGGTTTCTGGTGGCAATGGGAGCGTGTCCAGGCGGGCCCGCA  
 GCTTACGGCACTGGCTAACTTAGAAGCCAGGAGGGGTCTATAGGTGCTGCTCTCATCCCGGATGTC  
 AGTGGGCTGCCTGTTATGCTCAGTCAGGAGAGCCTAGGAGGCTGACCCAGGCACAGGTGGCAGCGTTTC  
 CTGGAGAGAATGCTTTGGAACACTTTCAGACCAGGACACCTGGGACAGCCTGAGGAGCCCGGTTTCTG  
 CAGCCCTTTGTCATCTGGTGGTGGAGCAGAGTCCCTGCCGCTGGGGGGCCTGGACATGCAGAGGCAGGA  
 CACCTCGCAAGGTTTGTGACTTCCACCTGAACCAACCAGCAGCCAGCCCAACGCGTCTGCCTACAG  
 AGGTGGCAGCCCTCCGCTTGAAGAAATTTTGTCTGTGGATAGCGTGGCAGTGGACTGTGCCTACAGGAC  
 TGTGCCAAGCCAGGCCCTCAGCCTGGCCACATGGATCACTATTGACTGAAGGGTGTCTCAGAAGCCTT  
 TCGGGGACTTGAACCGTTCCCTGTGGGATGGAGGTGCACTCTGGCCAGAGAGAACTGGAGAGCGTGG  
 TTGCTGTGCGGAAGCCATGGCTTTTGAATTTCCAATGGGAGCCATGAGTTACTGTCTCAGGGACAGAA  
 GCAGATTTTTATCAGACTTCCGATGGGCTTATCTTGTCCCTCCAGGTACAATAGTGTCTCAGGAGGAG  
 GACATTGTACAGTGACTGATGCAGAGGGCGTGCCTGCGGATGGGCCCGC

**ACGCGT**ACGCGGCCGCTCGAGCAGAACTCATCTCAGAAGAGGATCTGGCAGCAAATGATATCCTGGATT  
 ACAAGGATGACGACGATAAGGTTTAA

**Protein Sequence:** >RC209937 representing NM\_018335  
Red=Cloning site Green=Tags(s)

MADAEPEAGGSEDDGGGGGPAPPGQSGSVARVAPLGPEQLRQVLEQVTKAQPPIPPPPFVLRDAARRLR  
DAAQQAALQRGRGTEPPRLPRLPPQQLAICVKVTSGETKGQERPMLLPTTIQPQTARKSQLPRGNSCL  
VGLHIASPQLLRVQPLVRTEPQSCFLSDLCQPPAQGFVQRPLPALQVVPAKRVPAPKAPDEQGSMLTPLS  
ASDPLAVTSLSSSAHPFISNLHTRHTEKLLKSLKVKTRSGRVSRRPKYKAKDYKFIKTEDLADGHLSDS  
DDYSELVCEEDEDQRERHALFDLSSCSLRPKSFKCQTCEKSYIGKGLARHFKLNPGHGQLDPEMVLSEK  
ASGSTLRGCTEERTLSLTSGLSMPADPCEGGARSLVTEASARGLQNGQSVDVEETLPSEPENGALLRS  
ERYQGPRRRACSETLAESRTAVLQORRAAQLPGGPAAGEQRASPSKARLKEFLQQCREDLVELALPQL  
AQVVTVEFLLMKVEKDHAKPFFPAIYKEFEELHKMVKKMCQDYLSSSGLCSQETLEINNDKVAESLGI  
TEFLRKKEIHPDNLGPKHLSRDMDGEQLEGASSEKREREAAEGLASVKRPPREALSNDTTESLAANSRG  
REKPRPLHALAAGFSPPVNVTVSPRSEESHSTTVSGGNGSVFQAGPQLQALANLEARRGSI GAALSSRDV  
SGLPVYAQSGEPRRLTQAQVAAPGENALEHSSDQDTWDSLRSRPGFCSPSSGGGAESLPPGGPGHAEAG  
HLGKVCDFHLNHQQPSTSVLPTEVAAPPLEKILSVDSVAVDCAYRTVPKPGPQPGPHGSLLTEGCLRSL  
SGDLNRFPCGMEVHSGQRELESVVAVGEAMAFEISNGSHELLSQGQKQIFIQTS DGLILSPPGTIVSQEE  
DIVTVTDAEGRACGWAR

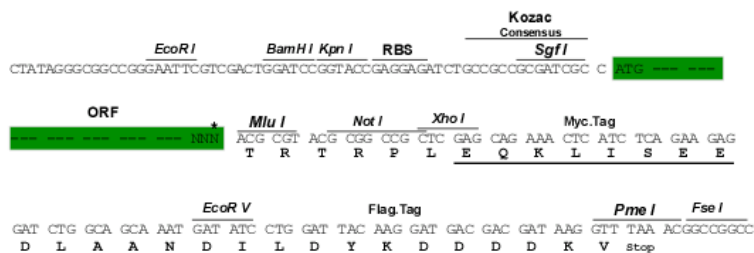
TRTRPLEQKLISEEDLAANDILDYKDDDDKV

**Chromatograms:** [https://cdn.origene.com/chromatograms/mk8025\\_f03.zip](https://cdn.origene.com/chromatograms/mk8025_f03.zip)

**Restriction Sites:** SgfI-MluI

**Cloning Scheme:**

Cloning sites used for ORF Shuttling:



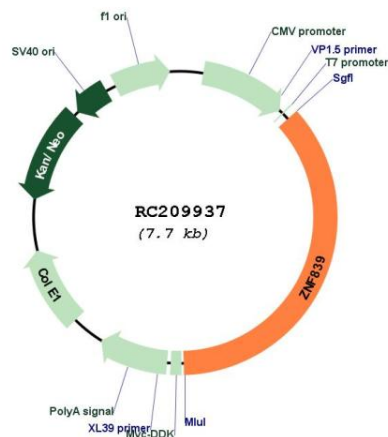
\* The last codon before the Stop codon of the ORF

**ACCN:** NM\_018335

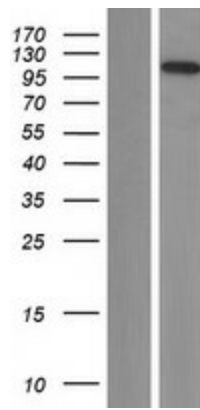
**ORF Size:** 2781 bp

<b>OTI Disclaimer:</b>	The molecular sequence of this clone aligns with the gene accession number as a point of reference only. However, individual transcript sequences of the same gene can differ through naturally occurring variations (e.g. polymorphisms), each with its own valid existence. This clone is substantially in agreement with the reference, but a complete review of all prevailing variants is recommended prior to use. <a href="#">More info</a>
<b>OTI Annotation:</b>	This clone was engineered to express the complete ORF with an expression tag. Expression varies depending on the nature of the gene.
<b>Components:</b>	The ORF clone is ion-exchange column purified and shipped in a 2D barcoded Matrix tube containing 10ug of transfection-ready, dried plasmid DNA (reconstitute with 100 ul of water).
<b>Reconstitution Method:</b>	<ol style="list-style-type: none"> <li>1. Centrifuge at 5,000xg for 5min.</li> <li>2. Carefully open the tube and add 100ul of sterile water to dissolve the DNA.</li> <li>3. Close the tube and incubate for 10 minutes at room temperature.</li> <li>4. Briefly vortex the tube and then do a quick spin (less than 5000xg) to concentrate the liquid at the bottom.</li> <li>5. Store the suspended plasmid at -20°C. The DNA is stable for at least one year from date of shipping when stored at -20°C.</li> </ol>
<b>RefSeq:</b>	<a href="#">NM_018335.5</a>
<b>RefSeq Size:</b>	3337 bp
<b>RefSeq ORF:</b>	2784 bp
<b>Locus ID:</b>	55778
<b>UniProt ID:</b>	<a href="#">A8K0R7</a>
<b>Cytogenetics:</b>	14q32.31
<b>MW:</b>	99.3 kDa

**Product images:**



Circular map for RC209937



Western blot validation of overexpression lysate (Cat# [LY413129]) using anti-DDK antibody (Cat# [TA50011-100]). Left: Cell lysates from untransfected HEK293T cells; Right: Cell lysates from HEK293T cells transfected with RC209937 using transfection reagent MegaTran 2.0 (Cat# [TT210002]).