

Product datasheet for RC209931

SULT1A4 (NM_001017390) Human Tagged ORF Clone

Product data:

Product Type:	Expression Plasmids
Product Name:	SULT1A4 (NM_001017390) Human Tagged ORF Clone
Tag:	Myc-DDK
Symbol:	SULT1A4
Synonyms:	HAST3; M-PST; ST1A3; ST1A3/ST1A4; ST1A4; STM; TL-PST
Mammalian Cell Selection:	Neomycin
Vector:	pCMV6-Entry (PS100001)
E. coli Selection:	Kanamycin (25 ug/mL)
ORF Nucleotide Sequence:	>RC209931 ORF sequence Red=Cloning site Blue=ORF Green=Tags(s)

TTTTGTAATACGACTCACTATAGGGCGCCGGGAATTCGTCGACTGGATCCGGTACCGAGGAGATCTGCC
GCC**CGCATCGCC**

ATGGAGCTGATCCAGGACACCTCCCGCCGCCACTGGAGTACGTGAAGGGGTCCCGCTCATCAAGTACT
TTGCAGAGGCACTGGGGCCCTGCAGAGCTTCCAGGCCGACCTGATGACCTGCTCATCAACACCTACCC
CAAGTCTGGCACCACCTGGGTGAGCCAGATACTGGACATGATCTACCAGGGCGGCACCTAGAGAAGTGT
AACCGGGCTCCCATCTACGTACGGGTGCCCTTCCCTTGAGGTCAATGATCCAGGGGAACCCCTCAGGGCTGG
AGACTCTGAAAGACACACCGCCCCACGGCTCATCAAGTACACCTGCCCTGGCTCTGCTCCCTCAGAC
TCTGTTGGATCAGAAGGTCAAGGTGGTCTATGTTGCCGAAACCCAAAGGACGTGGCGGTCTCCTACTAC
CATTTCCACCGTATGGAAAAGGCGACCCTGAGCCTGGGACCTGGGACAGCTTCCTGAAAAGTTTCATGG
CTGGAGAAGTGTCTACGGGTCCCTGGTACCAGCACGTGCAGGAGTGGTGGGAGCTGAGCCGACCCACCC
TGTTCTCTACCTCTTCTATGAAGACATGAAGGAGAACCCAAAAGGGAGATTCAAAGATCTCTGGAGTTT
GTGGGGCGCTCCCTGCCAGAGGAGACCATGGACTTCATGGTTCAGCACACGTCTGTTCAAGGAGATGAAGA
AGAACCCTATGACCAACTACACCACCGTCCCCAGGAGCTCATGGACCACAGCATCTCCCCTTCATGAG
GAAAGGCATGGCTGGGGACTGGAAGACCACCTTACCCTGGCGCAGAATGAGCGCTTCGATGCGGACTAT
GCGGAGAAGATGGCAGGCTGCAGCCTCAGCTTCCGCTCTGAGCTG

ACGCGTACGCGGGCCGCTCGAGCAGAAACTCATCTCAGAAGAGGATCTGGCAGCAAATGATATCCTGGATT
ACAAGGATGACGACGATAAGGTTTAA



[View online »](#)

Protein Sequence: >RC209931 protein sequence
Red=Cloning site Green=Tags(s)

MELIQDTSRPPLEYVKGVPLIKYFAEALGPLQSFQARPDLLINTYPKSGTTWVSQILDMIYQGGDLEKC
 NRAPIYVRVPFLEVNDPGEPSGLETCLKDTPPRLIKSHLPLALLPQTLLDQKVKVYVARNPKDVAVSYY
 HFHRMEKAHPEPGTWDSFLEKFMAGEVSYGSWYQHVQEWELSRTHPVL YLFYEDMKENPKREIQKILEF
 VGRSLPEETMDFMVQHTSFKEMKKNPMTNYTTVPQELMDHSISPFMRKGMAGDWKTTFTVAQNERFDADY
 AEKMAGCSLSFRSEL

TRTRPLEQKLISEEDLAANDILDYKDDDDKV

Chromatograms: https://cdn.origene.com/chromatograms/mk6437_b07.zip

Restriction Sites: SgfI-MluI

Cloning Scheme:



ACCN: NM_001017390

ORF Size: 885 bp

OTI Disclaimer: The molecular sequence of this clone aligns with the gene accession number as a point of reference only. However, individual transcript sequences of the same gene can differ through naturally occurring variations (e.g. polymorphisms), each with its own valid existence. This clone is substantially in agreement with the reference, but a complete review of all prevailing variants is recommended prior to use. [More info](#)

OTI Annotation: This clone was engineered to express the complete ORF with an expression tag. Expression varies depending on the nature of the gene.

Components: The ORF clone is ion-exchange column purified and shipped in a 2D barcoded Matrix tube containing 10ug of transfection-ready, dried plasmid DNA (reconstitute with 100 ul of water).

Reconstitution Method:

1. Centrifuge at 5,000xg for 5min.
2. Carefully open the tube and add 100ul of sterile water to dissolve the DNA.
3. Close the tube and incubate for 10 minutes at room temperature.
4. Briefly vortex the tube and then do a quick spin (less than 5000xg) to concentrate the liquid at the bottom.
5. Store the suspended plasmid at -20°C. The DNA is stable for at least one year from date of shipping when stored at -20°C.

RefSeq: [NM_001017390.3](#)

RefSeq Size: 1397 bp

RefSeq ORF: 888 bp

Locus ID: 445329

UniProt ID: [P50224](#)

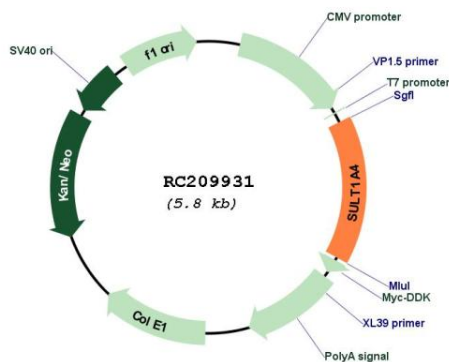
Cytogenetics: 16p11.2

Protein Pathways: Sulfur metabolism

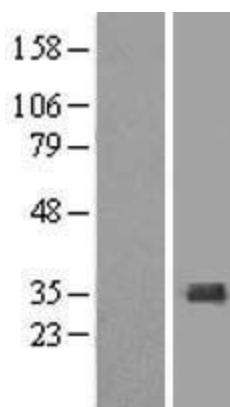
MW: 34.2 kDa

Gene Summary: Sulfotransferase enzymes catalyze the sulfate conjugation of many hormones, neurotransmitters, drugs, and xenobiotic compounds. These cytosolic enzymes are different in their tissue distributions and substrate specificities. The gene structure (number and length of exons) is similar among family members. This gene encodes a phenol sulfotransferase with thermolabile enzyme activity. Four sulfotransferase genes are located on the p arm of chromosome 16, this gene and SULT1A3 arose from a segmental duplication. Read-through transcription exists between this gene and the upstream SLX1B (SLX1 structure-specific endonuclease subunit homolog B) gene that encodes a protein containing GIY-YIG domains. [provided by RefSeq, Nov 2010]

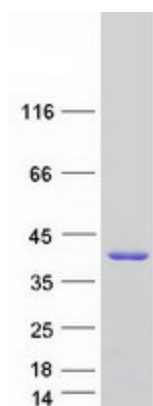
Product images:



Circular map for RC209931



Western blot validation of overexpression lysate (Cat# [LY422770]) using anti-DDK antibody (Cat# [TA50011-100]). Left: Cell lysates from untransfected HEK293T cells; Right: Cell lysates from HEK293T cells transfected with [RC222321] using transfection reagent MegaTran 2.0 (Cat# [TT210002]).



Coomassie blue staining of purified SULT1A4 protein (Cat# [TP309931]). The protein was produced from HEK293T cells transfected with SULT1A4 cDNA clone (Cat# RC209931) using MegaTran 2.0 (Cat# [TT210002]).